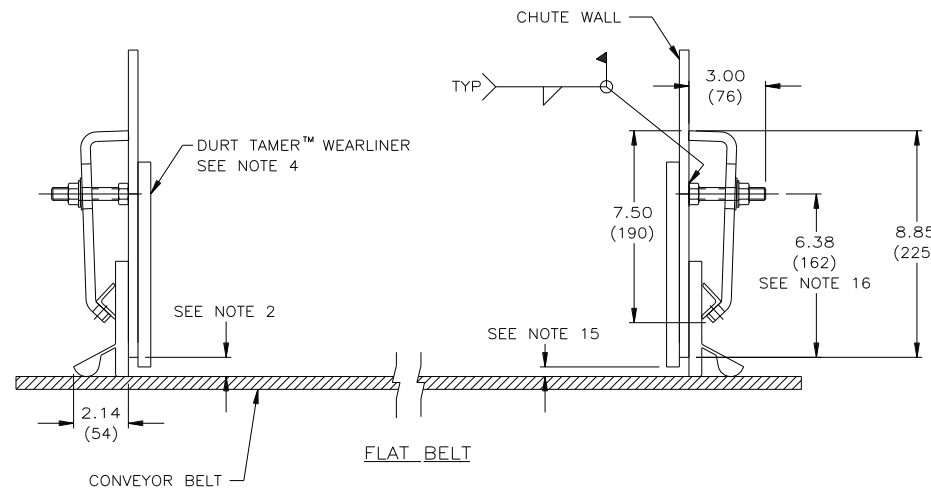
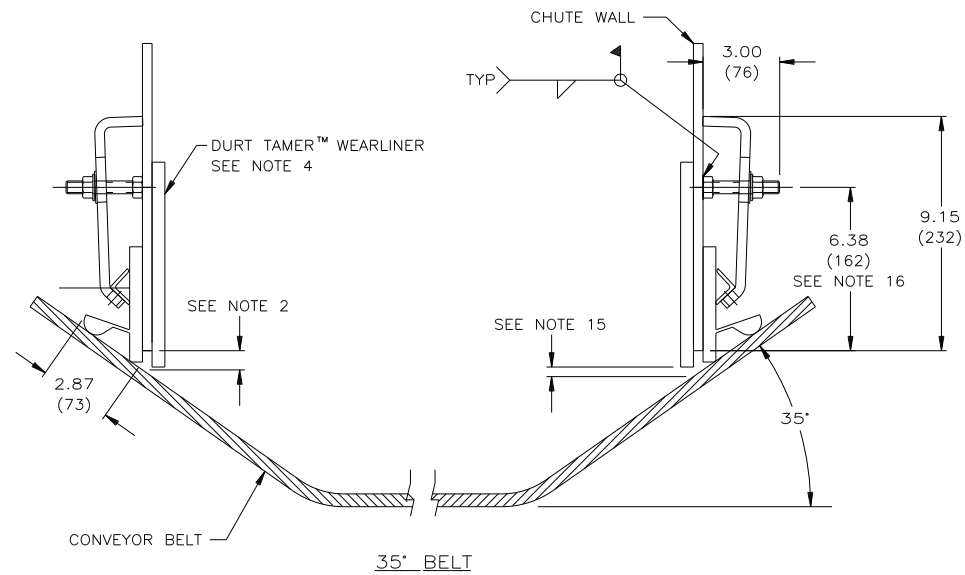
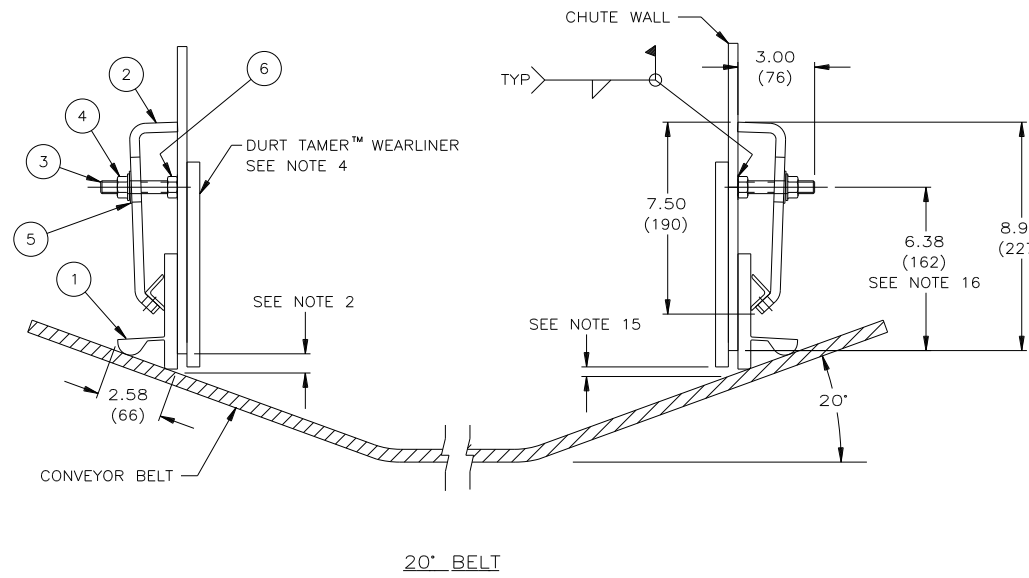
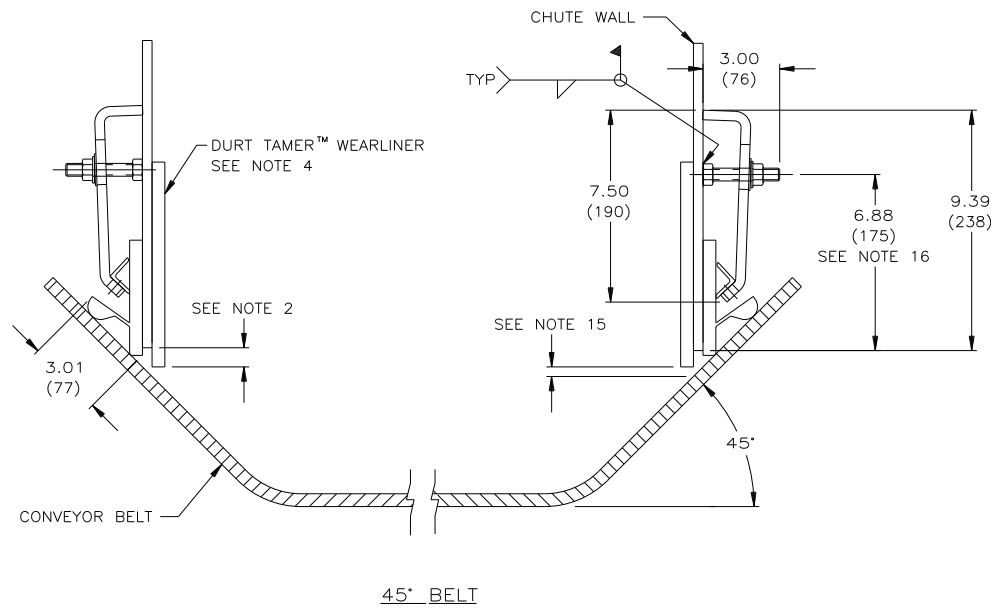


**INSTALLATION DETAIL**

ALL DIMENSIONS TYPICAL  
EACH SIDE OF CONVEYOR  
ON ALL LAYOUTS

ITEM	QTY.	DESCRIPTION	PART NUMBER
1	*	APRON SEAL™ 1-PIECE STANDARD	100724
2	**	ANGLE CLAMP WELDMENT	32049
3	***	STUD 1/2-13NC X 3.00	31189
4	***	NUT FLANGE LOCKING 1/2-13NC	18843
5	***	FLAT WASHER 1/2	17328
6	***	NUT HEX 1/2-13NC	34134

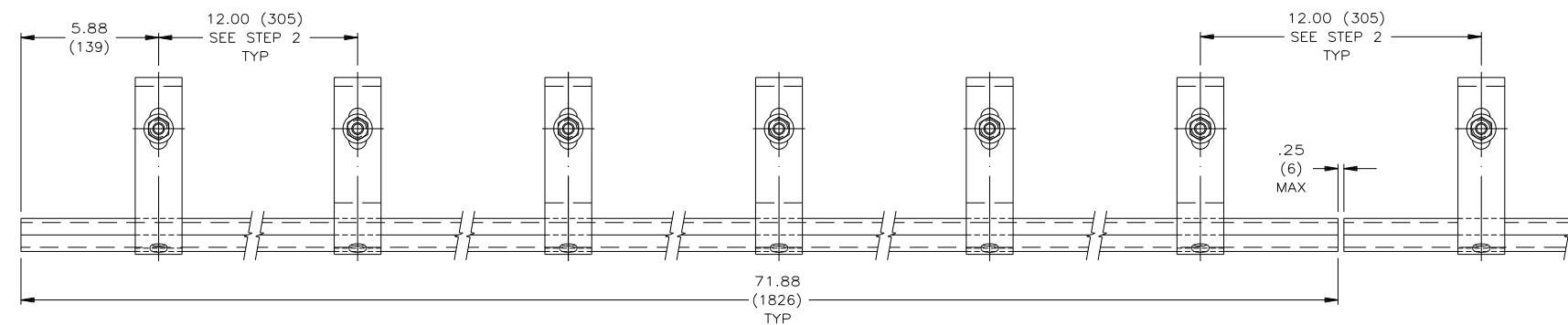
\* - SPECIFY LENGTH REQUIRED IN FEET.  
\*\* - EACH WELDMENT IS 71.88 (1826) LONG. (1) WELDMENT REQUIRED PER EVERY 6'-0"(1829) OF 1-PC STD APRON SEAL™ (100724).  
\*\*\* - (1) STUD (31189), (1) HEX NUT (34134), (1) FLANGE NUT (18843), AND ONE WASHER (17328) ARE SUPPLIED FOR EACH FOOT OF APRON SEAL™. SEE INSTALLATION INSTRUCTIONS.



- NOTE:
- 1) ALL DIMENSIONS IN INCHES (MM) AND ARE FOR REFERENCE ONLY.
  - 2) MARTIN ENGINEERING RECOMMENDS CHUTE WALL TO BE WITHIN .75 (19) OF BELT.
  - 3) A MIN. OF 8.00 (203) VERTICAL AND 4.00 (102) HORIZONTAL CLEARANCE REQUIRED TO INSTALL 1-PC STD APRON SEAL™ & ANGLE CLAMPS.
  - 4) TO PROVIDE AN EFFECTIVE SEAL, DURT TAMER™ WEARLINERS (STRAIGHT OR DEFLECTOR) ARE RECOMMENDED TO PREVENT THE MAIN LOAD FROM CONTACTING THE 1-PC STD APRON SEAL™ (STRAIGHT WEARLINER SHOWN).
  - 5) IF DURT TAMER™ WEARLINERS ARE BOLTED TO CHUTE WALL, 1-PC STD APRON SEAL™ AND ANGLE CLAMPS ARE TO BE MOUNTED IN A MANNER AS TO ALLOW EASY ACCESS TO BOLTS.
  - 6) 1-PC STD APRON SEAL™ IS DESIGNED AS A DUST SEAL ONLY. IT IS NOT TO BE USED AS A MATERIAL HOLDBACK OR LOAD CARRYING SURFACE.
  - 7) BELT MUST NOT LIFT OFF IDLERS DURING START-UP OR WHILE BELT IS IN OPERATION.
  - 8) BELT MUST TRACK PROPERLY TO PREVENT IT FROM RUNNING BEHIND 1-PC STD APRON SEAL™.
  - 9) CONSULT MARTIN ENGINEERING FOR INSTALLATIONS WITH UNUSUAL OR SEVERE CONDITIONS, I.E.: CONCAVE/CONVEX CURVES, EXTREME SIDE PRESSURE, UNUSUALLY FAST OR SLOW MOVING BELTS, TEMPERATURE EXTREMES, ETC.
  - 10) 1-PC STD APRON SEAL™ AND DURT TAMER™ WEARLINER SHOULD BEGIN AT LEAST 12.00 (305) BEFORE INLET SIDE OF CHUTE WALL.
  - 11) CONTACT MARTIN ENGINEERING PRIOR TO MOUNTING THESE PRODUCTS IN ANY WAY OTHER THAN WHAT IS DEPICTED ON THIS DRAWING OR IN OPERATOR'S MANUAL (M3248).
  - 12) ANGLE CLAMP WELDMENT (ITEM 2) IS TO BE FULLY TIGHTENED AGAINST CHUTE WALL.
  - 13) ANGLE CLAMP WELDMENT MUST HAVE FIRM BACKING TO ENSURE PROPER CLAMP FORCE.
  - 14) REFER TO OPERATOR'S MANUAL M3248 DURING INSTALLATION. THIS DRAWING NOT TO BE USED IN PLACE OF OPERATOR'S MANUAL.
  - 15) .38 (10) MAX. IN IMPACT AREA, TAPERING TO .75 (19) AT EXIT AREA.
  - 16) FOR FLAT TO 35° BELTS USE PRE-FAB CHUTE WALL P/N 33564-35. FOR 45° BELTS USE P/N 33564-45.

**INSTALLATION INSTRUCTIONS**

- STEP 1: SCRIBE A LINE PARALLEL TO BELT SURFACE 6.38 (162) ABOVE BELT. (NOTE: 45° BELT USE 7.06 (180))
- STEP 2: ALONG THIS LINE, MAKE FIRST MARK 5.88 (150) FROM END OF CHUTE WALL AND MARK EVERY 12.00 (305).
- STEP 3: ON MARKED CENTERS, WELD 1/2-13NC HEX NUTS (34134) TO CHUTE. THREAD STUDS (31189) INTO NUTS.
- STEP 4: PLACE APRON SEAL™ (100724) AGAINST CHUTE WALL. APRON SEAL™ MUST MAKE CONTINUOUS CONTACT WITH BELT. PLACE ANGLE CLAMP WELDMENT (32049) OVER STUDS.
- STEP 5: PUSH ANGLE CLAMP WELDMENT TIGHT AGAINST APRON SEAL™. PLACE WASHERS (17328) OVER STUDS, THEN FLANGE NUTS (18843). TIGHTEN NUTS TO 40 FT/LBS.



© Copyright 2000 Martin Engineering. All rights reserved. Covered by U.S. and foreign patents pending and issued. ® and ™ indicate trademarks of Martin Engineering.

**MARTIN ENGINEERING** NEPONSET ILLINOIS USA

TITLE	INSTALLATION DRAWING FOR 1-PIECE STANDARD APRON SEAL™ & ANGLE CLAMP	DRAWN <i>MJT</i> DATE 01/25/00
ENG.	<i>XFB</i>	CHECKED
DATE	01/26/00	APPROVED <i>FRB</i>
DATE	01/26/00	SCALE 1/4

NO.	DESCRIPTION	ECN	DATE	BY
	REVISION			

SALES DRAWING MDO442 S35871-N L:\SAL\S35871-N