

MARTIN® Dust Bag



The MARTIN® Dust Bag System is available with a Standard Bag or a Static-Dissipating Bag for use in explosive environments.

MARTIN® Dust Bag Assembly

The MARTIN® Dust Bag Assembly includes a chute top cover, upright mounting frame, clamp, filter bag, installation hardware, and a rubber dust curtain. An assembly without a chute top cover is also available.

Note: Installation of one solid rubber curtain is recommended on each side of each pressure relief bag to direct air through filter.

MARTIN® Dust Bags provide passive relief for positive air pressure produced at belt conveyor loading zones, preventing the escape of airborne dust. Properly applied, these bags can eliminate the need for “Baghouse” Dust Collection systems. Installed in the conveyor cover before the end of the transfer point’s skirted area, MARTIN® Dust Bags vent air while collecting the dust from that air. When positive air pressure from material flow stops, MARTIN® Dust Bags collapse, dislodging collected material back onto the conveyor belt.

Standard MARTIN® Dust Bag

Standard MARTIN® Dust Bags provide durable performance and effective dust control without needing a “baghouse” dust collector.

Static-Dissipating MARTIN® Dust Bag

Designed for use in combustible environments, this dust bag instantly dissipates static charges. The felt-like filter media is interwoven with carbonized fibers. Any static charge is carried to ground without generating a spark. MARTIN® Static-Dissipating Dust Bags have low electrical resistance in keeping with DIN Standard 54345 Parts 1 and 3.

Specifications

Standard Size Diameter: 12 in. (300 mm) or 24 in. (600 mm)

Type	Standard Bag	Static-Dissipating Bag
Permeability	12-in. Bag, 450 cfm (212 l/s) 24 in. Bag, 1000 cfm (472 l/s)	12-in. Bag, 230 cfm (108 l/s) 24-in. Bag, 450 cfm (212 l/s)

Fabric	Satin Finish 100% Nylon	Polyester Needled Felt with 5% Carbonized Fiber (for static dissipation)
--------	-------------------------	--

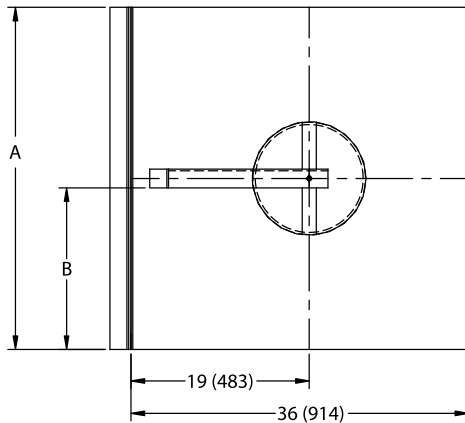
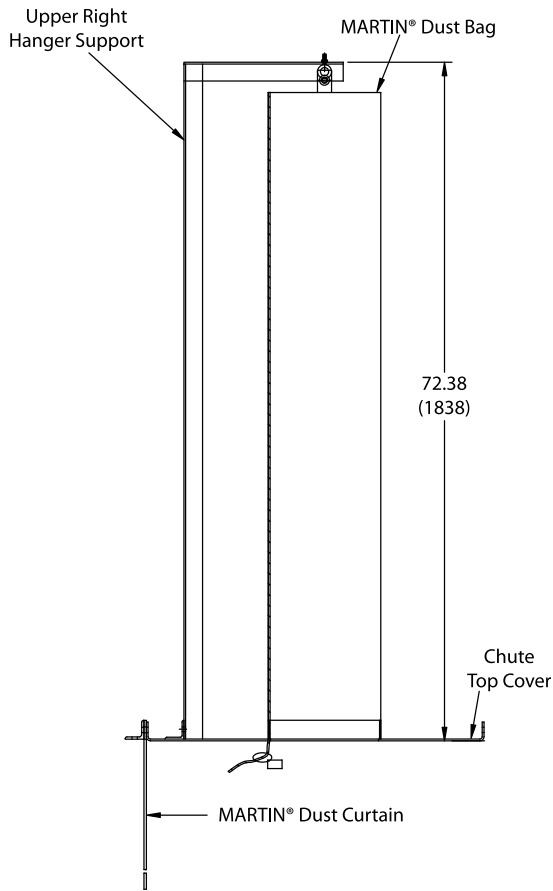
Weight 5.4 oz./yard² (182 g/m²)

Temperature Limit Continuous: 200°F (93°C)
Intermittent: 250°F (121°C)

Bag Cleaning Bag “self cleans” by partially collapsing when positive air flow is halted.

Complete Bag Cleaning (as needed)	Hand launder in cold water and allow to air dry. See Owner/Operator Manual for specific instructions.	Dislodge accumulated material by beating (similar to a rug). Laundering will void manufacturers warranty.
-----------------------------------	---	---

Custom Sizes Available to fit air flow and clearances of specific transfer points.



Assembly includes chute top cover, upright hanger support and dust curtain. Extension Sleeve Kit does not include top cover.

NOMENCLATURE

MARTIN® Dust Bag Assembly

P/N: XXXXX-XXXXX

12" Bag 34839
 24" Bag 34840
 Belt Width (in.)
 Bag Type
Blank—Standard Bag or
SD—Static-Dissipating Bag
K—Extension Sleeve Kit

Replacement Bag

P/N: XXXXX-XX

12" Bag 34825
 24" Bag 34826
 Bag Type
Blank—Standard Bag or
SD—Static-Dissipating Bag

DIMENSIONS

Belt Width in	Dimension A in (mm)	Dimension B in (mm)
18	18.50 (470)	8.25 (210)
24	24.50 (622)	11.25 (286)
30	30.50 (775)	14.25 (362)
36	36.50 (927)	17.25 (438)
42	42.50 (1080)	20.25 (514)
48	48.50 (1232)	23.25 (591)
54	54.50 (1384)	26.25 (667)
60	60.50 (1537)	29.25 (743)
72	72.50 (1842)	35.25 (895)
84	84.50 (2146)	41.25 (1048)
96	96.50 (2451)	47.25 (1200)



Martin Engineering USA
 One Martin Place
 Neponset, IL 61345-9766 USA
 800 544 2947 or 309 852 2384
 Fax 800 814 1553
www.martin-eng.com

Subject to change without prior notice.
 Patents and patents pendings, ® registered
 trademark of Martin Engineering Company in the
 U.S. and other select locations.
 Additional information can be obtained at
www.martin-eng.com/trademarks.

QUALITY MANAGEMENT SYSTEM
 CERTIFIED BY DNV
ISO 9001:2008