

ITEM	QTY	DESCRIPTION	PART NUMBER
1	1	STANDARD V-PLOW ASSEMBLY	39072X-XXXXXXXXXX

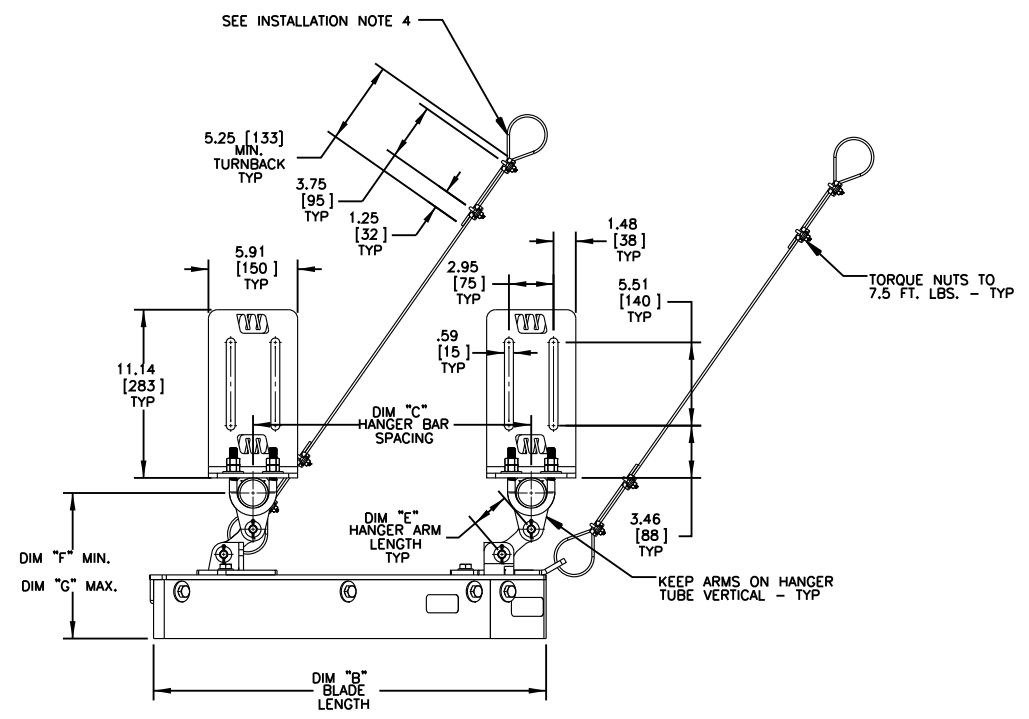
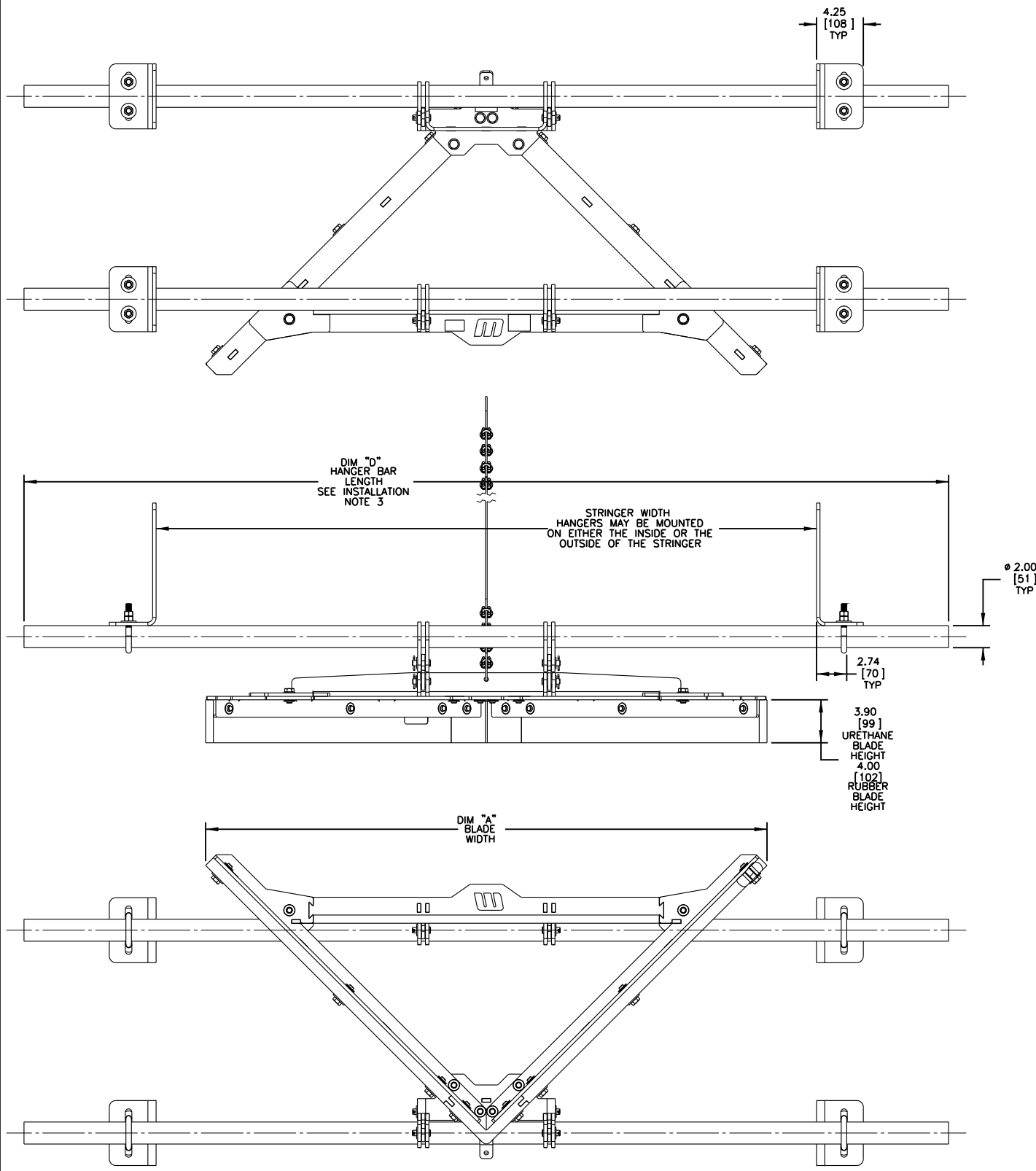
PART NUMBER	DIM 'A'	DIM 'B'	DIM 'C'	DIM 'D'	APPROX WEIGHT LBS
39072X-30XXXXXXXX	33.00	16.99	12.43	66.00	110
39072X-36XXXXXXXX	39.00	19.99	12.43	72.00	117
39072X-42XXXXXXXX	45.00	22.99	18.43	78.00	128
39072X-48XXXXXXXX	51.00	25.99	18.43	84.00	135
39072X-54XXXXXXXX	57.00	28.99	18.43	90.00	143
39072X-60XXXXXXXX	63.00	31.99	26.43	96.00	155
39072X-66XXXXXXXX	69.00	34.99	26.43	102.00	162
39072X-72XXXXXXXX	75.00	37.99	26.43	108.00	169
39072X-78XXXXXXXX	81.00	40.99	35.43	114.00	188
39072X-84XXXXXXXX	87.00	43.99	35.43	120.00	195
39072X-96XXXXXXXX	99.00	49.99	35.43	120.00	206
39072X-108XXXXXX	111.00	55.99	50.43	144.00	233
39072X-120XXXXXX	123.00	61.99	50.43	156.00	248

FRAME MATERIAL CHART	
ASSEMBLY PART NUMBER	FRAME MATERIAL
39072-XXXXXXXXXX	MILD STEEL (PAINTED)
39072C-XXXXXXXXXX	304 STAINLESS STEEL
39072S-XXXXXXXXXX	316 STAINLESS STEEL

BLADE CHART		
ASSEMBLY PART NUMBER	URETHANE SIDE BLADE P/N	RUBBER BLADE P/N
39072X-30RXXXXX	-----	39065R-30
39072X-30UXXXXX	39065U-30XX	-----
39072X-36RXXXXX	-----	39065R-36
39072X-36UXXXXX	39065U-36XX	-----
39072X-42RXXXXX	-----	39065R-42
39072X-42UXXXXX	39065U-42XX	-----
39072X-48RXXXXX	-----	39065R-48
39072X-48UXXXXX	39065U-48XX	-----
39072X-54RXXXXX	-----	39065R-54
39072X-54UXXXXX	39065U-54XX	-----
39072X-60RXXXXX	-----	39065R-60
39072X-60UXXXXX	39065U-60XX	-----
39072X-66RXXXXX	-----	39065R-66
39072X-66UXXXXX	39065U-66XX	-----
39072X-72RXXXXX	-----	39065R-72
39072X-72UXXXXX	39065U-72XX	-----
39072X-78RXXXXX	-----	39065R-78
39072X-78UXXXXX	39065U-78XX	-----
39072X-84RXXXXX	-----	39065R-84
39072X-84UXXXXX	39065U-84XX	-----
39072X-96RXXXXX	-----	39065R-96
39072X-96UXXXXX	39065U-96XX	-----
39072X-108RXXXXX	-----	39065R-108
39072X-108UXXXXX	39065U-108XX	-----
39072X-120RXXXXX	-----	39065R-120
39072X-120UXXXXX	39065U-120XX	-----

URETHANE BLADE COLOR CHART			
ASSEMBLY PART NUMBER	URETHANE NOSE P/N	URETHANE SIDE BLADE P/N	BLADE COLOR
39072X-XXXXXX	39065U-N	39065U-XXX	ORANGE
39072X-XXXUBRXXXX	39065U-NBR	39065U-XXXBR	BROWN
39072X-XXXUGRXXXX	39065U-NGR	39065U-XXXGR	GREEN

HANGER ARM CHART				
ASSEMBLY PART NUMBER	HANGER ARM P/N	DIM "E" MIN.	DIM "F" MIN.	DIM "G" MAX.
39072X-XXXXXX0256	38965A-0256X	2.56 [65]	8.47 [215]	9.64 [245]
39072X-XXXXXX0689	38965A-0689X	6.89 [175]	12.80 [325]	13.97 [355]
39072X-XXXXXX0787	38965A-0787X	7.87 [200]	13.78 [350]	14.95 [380]
39072X-XXXXXX1181	38965A-1181X	11.81 [300]	18.72 [475]	19.89 [505]



- NOTES:
- ALL DIMENSIONS ARE GIVEN IN INCHES (MM).
 - ALL DIMENSIONS ARE FOR REFERENCE ONLY.
 - IN THE PART NUMBER THE "X" AFTER THE 39072 INDICATES THE MATERIAL.
 BLANK = PAINTED MILD STEEL
 C = 304 STAINLESS STEEL
 S = 316 STAINLESS STEEL
 THE NEXT TWO "X'S" INDICATE THE BELT WIDTH.
 THE NEXT "X" INDICATES THE BLADE TYPE.
 R = RUBBER BLADE (1 PC BLADE)
 U = URETHANE BLADE (3 PC BLADE)
 THE NEXT TWO "X'S" INDICATE THE URETHANE BLADE COLOR (SEE CHART).
 BLANK = ORANGE URETHANE BLADE COLOR
 BR = BROWN URETHANE BLADE COLOR
 GR = GREEN URETHANE BLADE COLOR
 THE LAST FOUR "XXXX'S" INDICATE THE HANGER ARM LENGTH (SEE CHART).
 - UNITS ARE SHIPPED DISASSEMBLED UNLESS SPECIFIED OTHERWISE. ADD AN "A" AT THE END OF THE PART NUMBER TO INDICATE AN ASSEMBLED UNIT.
 - WARNING LABELS (P/N'S 23395 AND 38277) ARE SHIPPED LOOSE AND ARE TO BE PLACED ON BOTH SIDES OF THE CONVEYOR NEAR THE PRODUCT.

- INSTALLATION NOTES:
- REFER TO OPERATORS MANUAL FOR PROPER INSTALLATION AND MAINTENANCE INSTRUCTIONS. ALSO REFER TO THE MANUAL FOR REPLACEMENT PARTS.
 - V-PLOW IS DESIGNED FOR TAIL PULLEY PROTECTION ONLY. NOT FOR HANDLING MATERIAL CARRYBACK.
 - HANGER BARS ARE LONGER THAN REQUIRED. FIELD MODIFY THE LENGTH AS NEEDED FOR PROPER MOUNTING. IF MOUNTED THRU THE STRINGER OR STEEL PLATE DRILL OR CUT 2-1/2" DIAMETER HOLES FOR MOUNTING THE HANGER BARS.
 - THE LANYARD CABLES ARE TO BE MOUNTED TO THE CONVEYOR STRUCTURE.

SHEET 2 OF 3

Copyright 2012 Martin Engineering. All rights reserved. Covered by U.S. and foreign patents pending and issued. ® and ™ indicate trademarks of Martin Engineering.

MARTIN ENGINEERING-USA
NEPONSET, IL USA

DRAWN RND
DATE 11/07/12

CHECKED

TITLE
STANDARD V-PLOW ASSEMBLY FOR 30 - 120 BELT WIDTHS

ENG. JAP
DATE 01/17/13

HE. JRD
DATE 01/22/13

APPROVED JMU
DATE 02/11/13

DRAWING NUMBER
PR12373

S50099

SCALE 5:32

NO.	DESCRIPTION	ECN	DATE	BY
	REVISION			