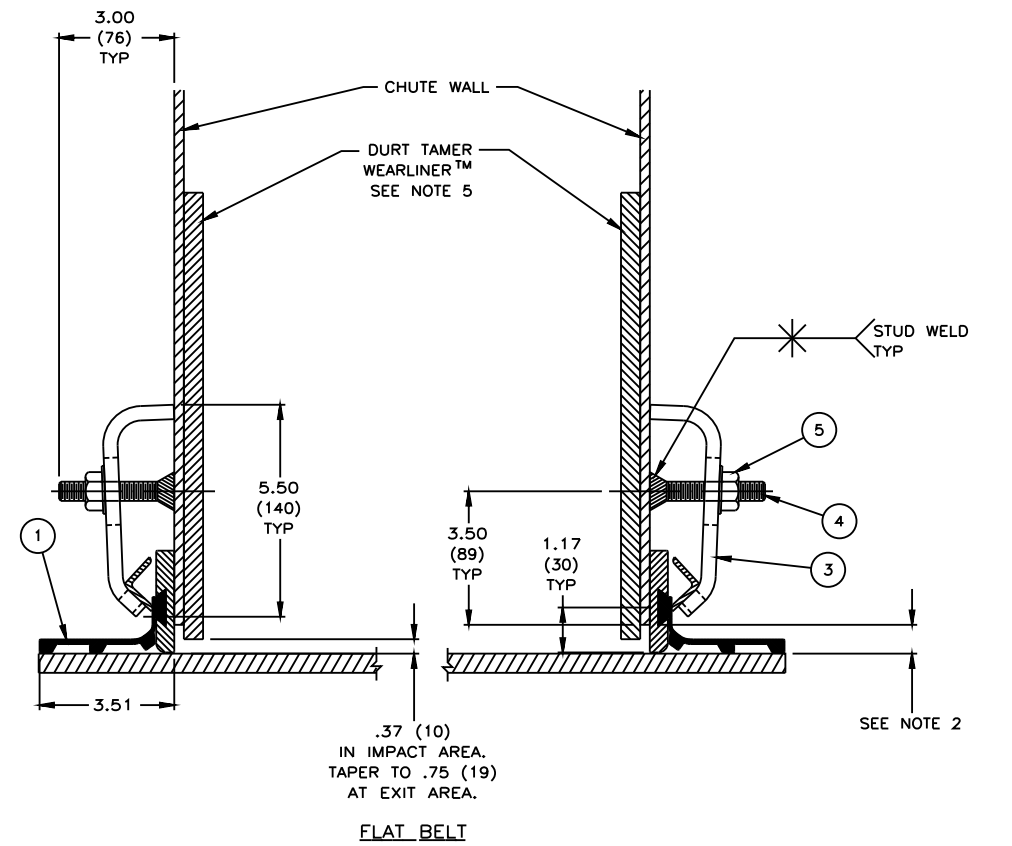
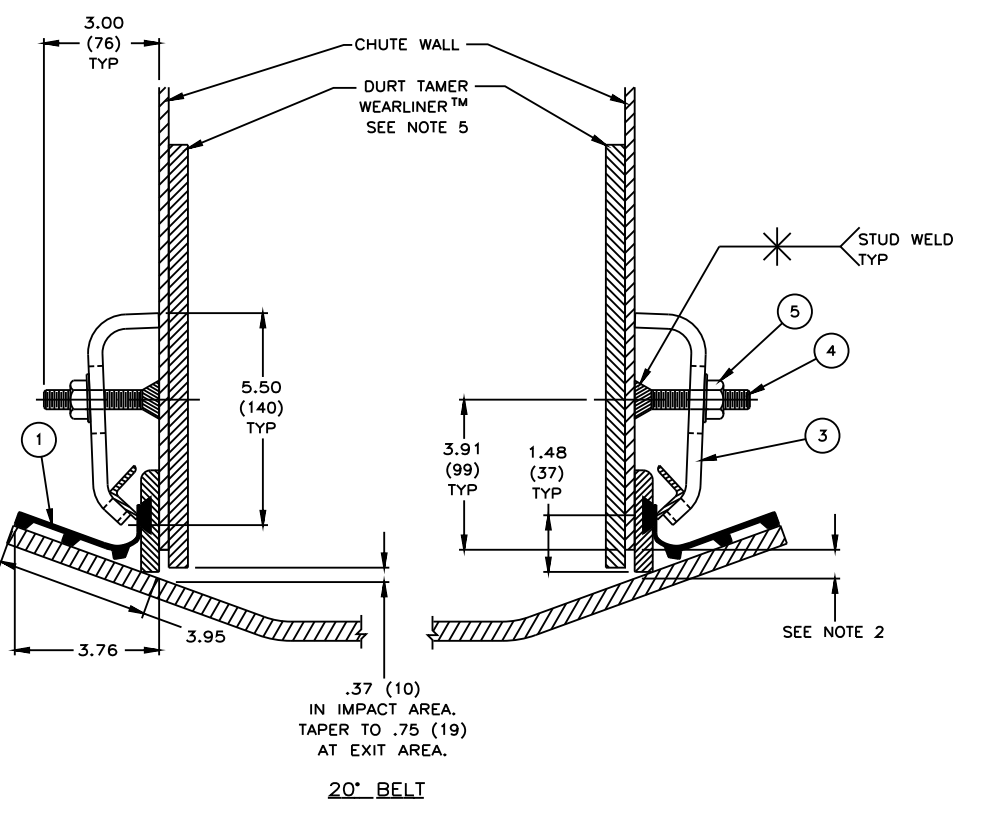
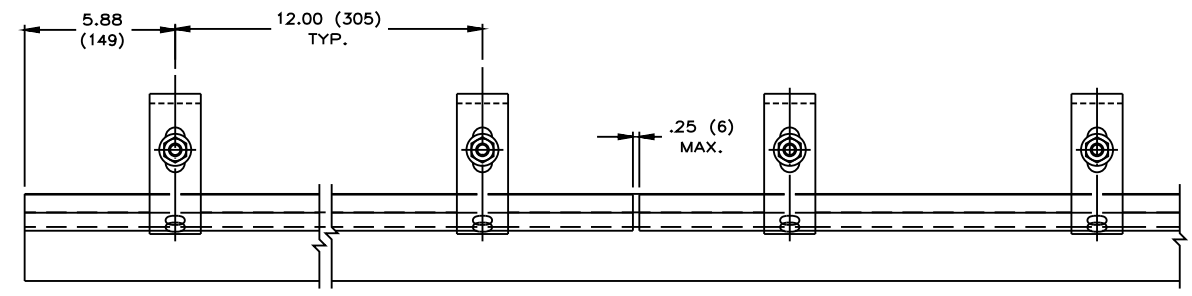
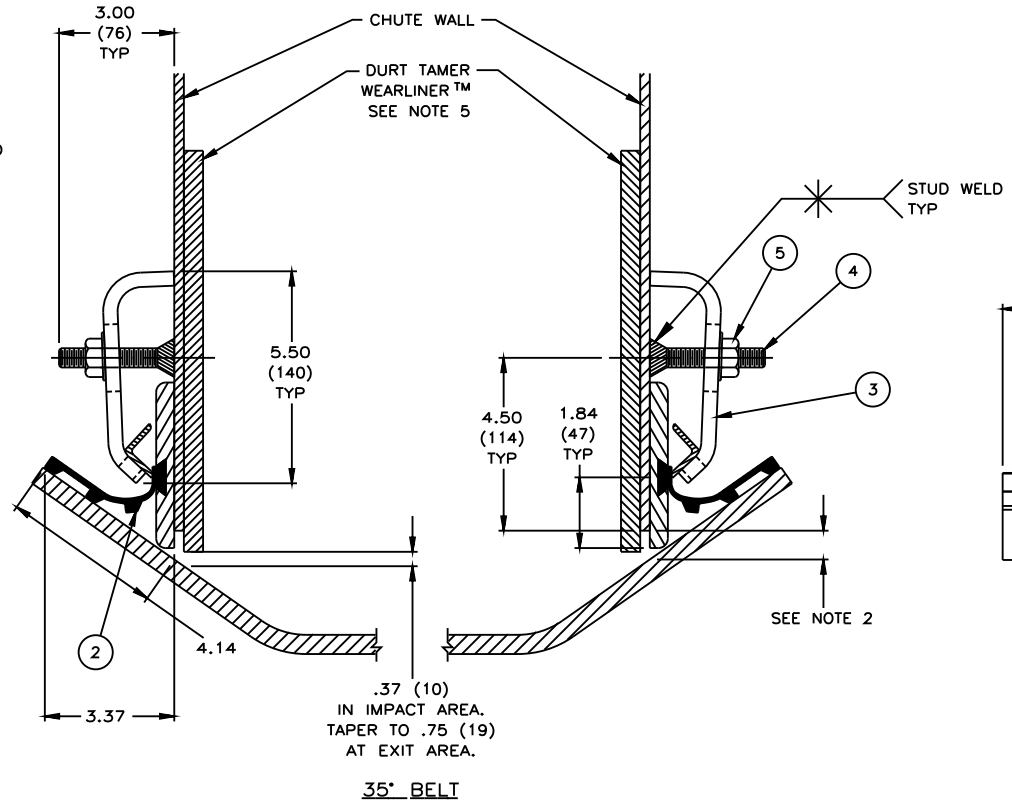
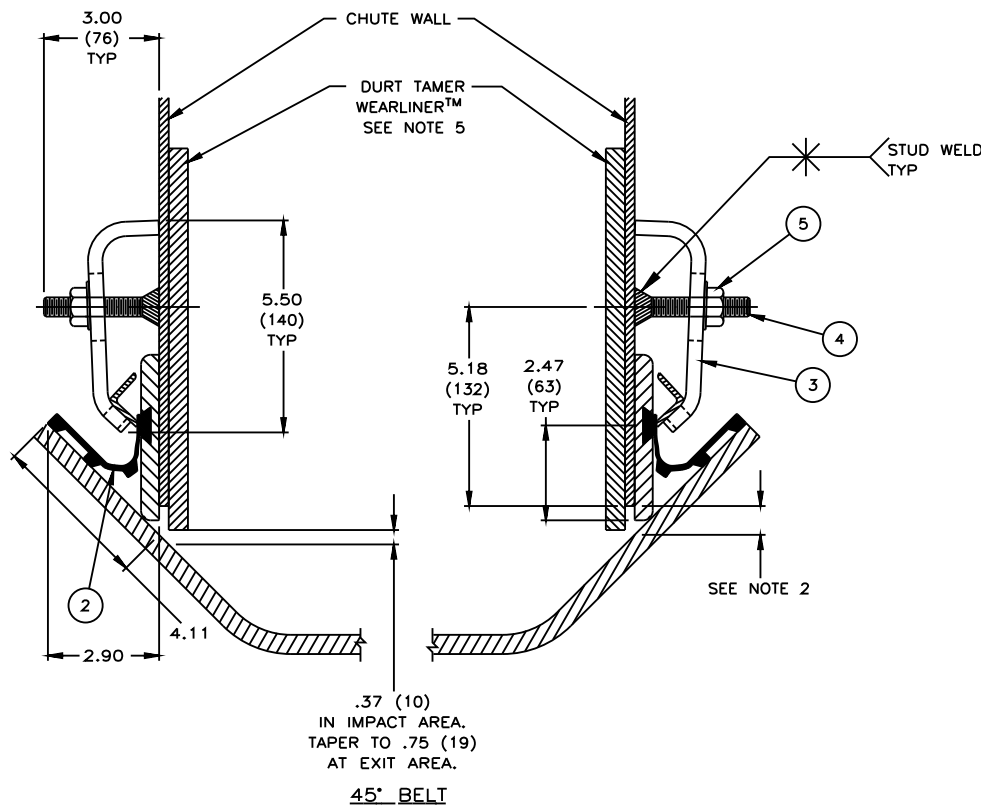


ITEM	QTY.	DESCRIPTION	PART NUMBER
1	12 FT	APRON SEAL™ 3.00 ASSEMBLY	32048-123
2	12 FT	APRON SEAL™ 5.00 ASSEMBLY	32048-125
3	1	LOW PROFILE ANGLE CLAMP WELDMENT	32600
4	*	STUD THREADED 1/2-13NC X 3.00	31189
5	**	NUT FLANGE LOCKING 1/2-13NC	18843

* - USE 1 PER EACH FOOT OF APRON SEAL™ SKIRTING
 ** - (2) OF 18843 ARE SUPPLIED PER FOOT, (1) IS USED TO HOLD THE ANGLE CLAMP IN PLACE ON THE STUD, THE OTHER CAN BE WELDED TO THE CHUTE WALL AND THEN INSERT THE STUD.



NOTES:

- 1) ALL DIMENSIONS ARE GIVEN IN INCHES (MM).
- 2) MARTIN RECOMMENDS CHUTE WALL TO BE WITHIN .75 (19) OF BELT.
- 3) SKIRTING CAN BE ADJUSTED INDIVIDUALLY PER CLAMP TO MEET VARIATIONS IN BELT PROFILE.
- 4) A MINIMUM OF 8.00 (203) VERTICAL AND 4.00 (102) HORIZONTAL CLEARANCE IS REQUIRED TO INSTALL SKIRTING AND CLAMPS.
- 5) TO PROVIDE AN EFFECTIVE SEAL, WEARLINERS™ ARE TO BE USED TO PREVENT THE MAIN LOAD FROM CONTACTING THE SKIRTING.
- 6) WHEN WEARLINERS™ ARE BOLTED TO CHUTE WALL, SKIRTING AND CLAMPS ARE TO BE MOUNTED IN A MANNER AS TO ALLOW EASY ACCESS TO BOLTS.
- 7) MARTIN APRON SEAL™ SKIRTING IS DESIGNED AS A DUST SEAL. IT IS NOT DESIGNED AS A MATERIAL HOLDBACK OR LOAD CARRYING SURFACE.
- 8) CONVEYOR BELT MUST NOT LIFT OFF IDLERS DURING STARTUP OR WHILE BELT IS RUNNING.
- 9) BELT MUST TRACK PROPERLY TO PREVENT BELT FROM RUNNING BEHIND SKIRTING.
- 10) CONTACT MARTIN ENGINEERING FOR INSTALLATIONS WITH UNUSUAL OR SEVERE CONDITIONS LIKE CONCAVE/CONVEX CURVES, EXTREME SIDE PRESSURE, EXTREMELY FAST OR SLOW BELTS, TEMPERATURE EXTREMES, CORROSIVE ATMOSPHERES, ETC.
- 11) SKIRTING AND WEARLINER™ SHOULD BEGIN AT LEAST 12.00(305) PRIOR TO INLET SIDE OF TRANSFER CHUTE WALL.
- 12) ANY DEVIATION IN MOUNTING, OTHER THAN SHOWN, CUSTOMER SHOULD CONSULT MARTIN ENGINEERING.
- 13) CLAMP IS TO BE FULLY TIGHTENED AGAINST CHUTE WALL.
- 14) CLAMP MUST HAVE FIRM BACKING TO ENSURE PROPER CLAMP FORCE.
- 15) REFER TO OPERATORS MANUAL DURING INSTALLATION. THIS IS NOT A SUBSTITUTE FOR OPERATORS MANUAL.

© Copyright 2000 Martin Engineering. All rights reserved. Covered by U.S. and foreign patents pending and issued. ® and ™ indicate trademarks of Martin Engineering.

MARTIN ENGINEERING		NEPONSET ILLINOIS USA
TITLE	INSTALLATION DRAWING FOR LOW PROFILE ANGLE CLAMP WELDMENT WITH APRON SEAL™ SKIRTING SYSTEM	DRAWN <i>MJT</i> DATE 02/18/00 CHECKED DATE 02/18/00 APPROVED <i>JFB</i> DATE 02/18/00 SCALE 1/4
NO.	DESCRIPTION	ECN DATE BY SALES DRAWING
	REVISION	S32045-L

NO.	DESCRIPTION	ECN	DATE	BY	SALES DRAWING