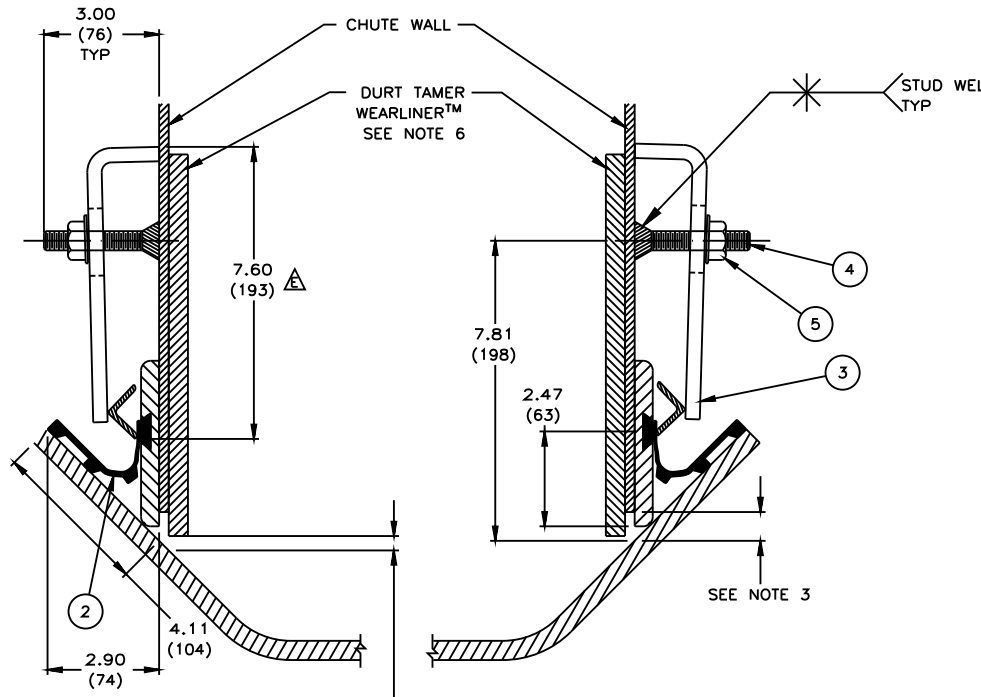
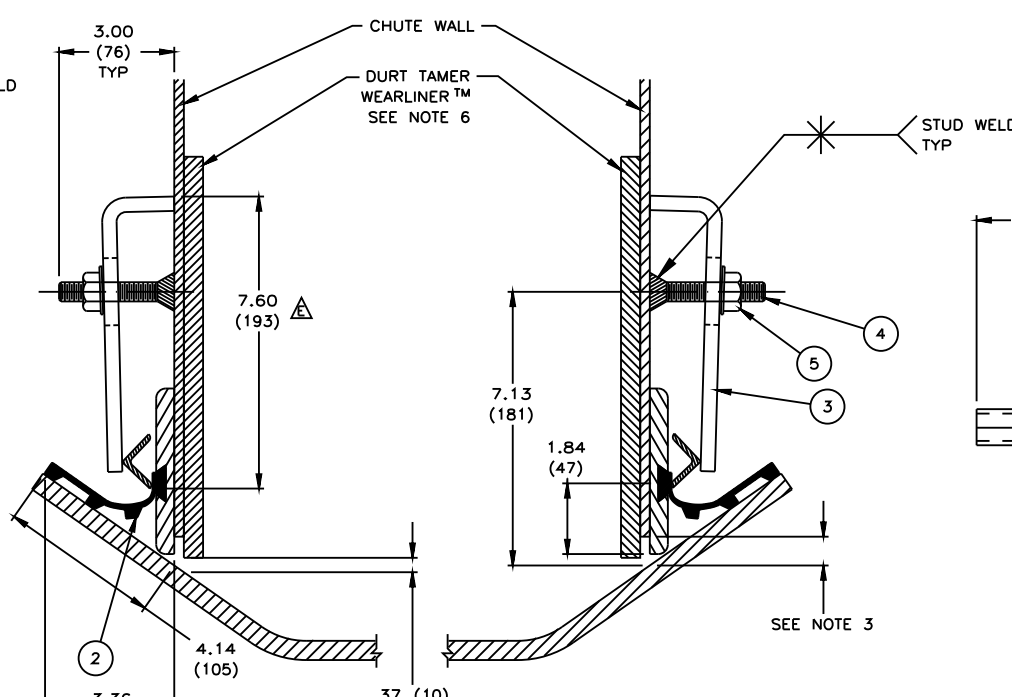


| ITEM | QTY. | DESCRIPTION | PART NUMBER |
|------|------|-----------------------------|-------------|
| 1 | 12 | APRON SEAL™ 3.00 ASSEMBLY | 32048-123 |
| 2 | 12 | APRON SEAL™ 5.00 ASSEMBLY | 32048-125 |
| 3 | 1 | ANGLE CLAMP WELDMENT | 32049 |
| 4 | * | STUD THREADED 1/2-13NC X 3 | 31189 |
| 5 | ** | NUT FLANGE LOCKING 1/2-13NC | 18843 |

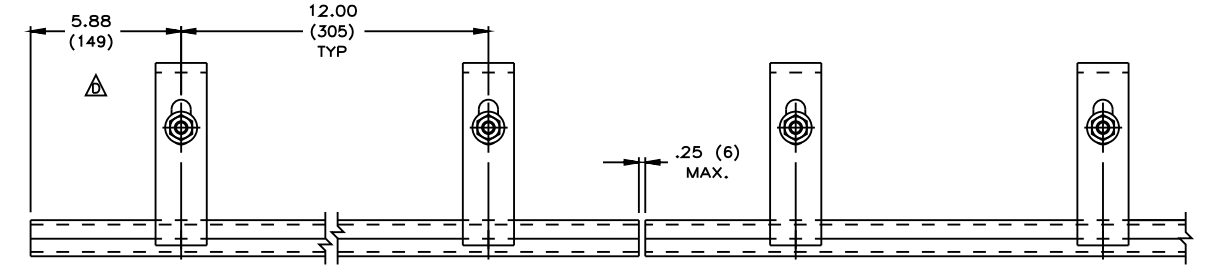
* - USE 1 PER EACH FOOT OF APRON SEAL™ SKIRTING
 ** - 2 OF 18843 ARE SUPPLIED PER FOOT, 1 IS USED TO HOLD THE ANGLE CLAMP IN PLACE ON THE STUD, THE OTHER CAN BE WELDED TO THE CHUTE WALL AND THEN INSERT THE STUD.
 B.O.M. SHOWS COMPONENTS USED IN APRON SEAL™ INSTALLATIONS.



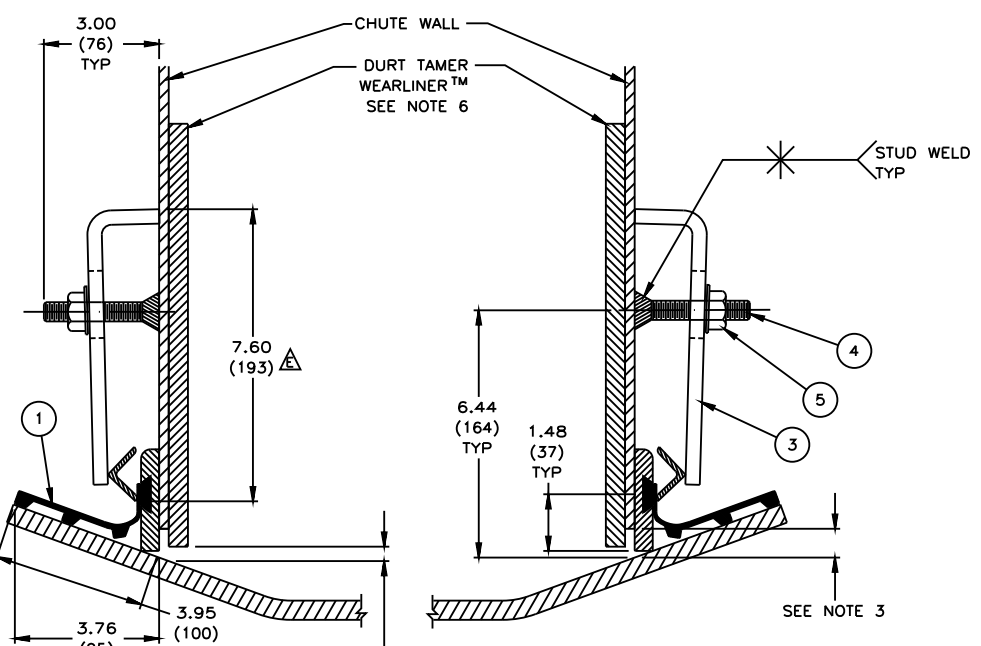
45° BELT



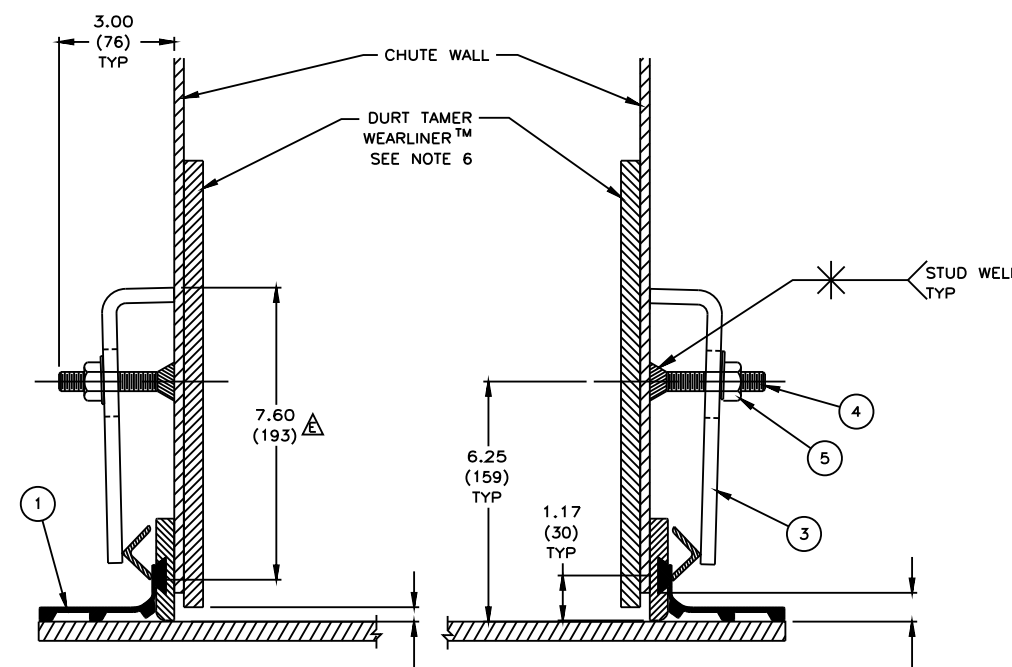
35° BELT



ANGLE CLAMP WELDMENT DETAIL
 SCALE: 1/4



20° BELT



FLAT BELT

- NOTES:
- 1) ALL DIMENSIONS ARE GIVEN IN INCHES (MM).
 - 2) ALL DIMENSIONS ARE SHOWN FOR REFERENCE PURPOSES ONLY.
 - 3) MARTIN RECOMMENDS CHUTE WALL BEING WITHIN .75"(19) OF BELT.
 - 4) SKIRTING CAN BE ADJUSTED INDIVIDUALLY PER CLAMP TO MEET VARIATIONS IN BELT PROFILE.
 - 5) A MIN. 10"(254) VERTICAL AND 4"(102) HORIZONTAL CLEARANCE REQUIRED TO INSTALL SKIRTING AND CLAMPS.
 - 6) TO PROVIDE AN EFFECTIVE SEAL, WEARLINERS™ ARE TO BE USED TO PREVENT THE MAIN LOAD FROM CONTACTING THE SKIRTING.
 - 7) WHEN WEARLINERS™ ARE BOLTED TO CHUTE WALL, SKIRTING AND CLAMPS ARE TO BE MOUNTED IN A MANNER AS TO ALLOW EASY ACCESS TO BOLTS.
 - 8) MARTIN APRON SEAL™ SKIRTING IS DESIGNED AS A DUST SEAL. IT IS NOT DESIGNED AS A MATERIAL HOLDBACK OR LOAD CARRYING SURFACE.
 - 9) CONVEYOR BELT MUST NOT LIFT OFF IDLERS DURING STARTUP OR WHILE BELT IS RUNNING.
 - 10) BELT MUST TRACK PROPERLY TO PREVENT BELT FROM RUNNING BEHIND SKIRTING.
 - 11) FOR INSTALLATIONS WITH UNUSUAL OR SEVERE CONDITIONS: I.E. CONCAVE/CONVEX CURVES, EXTREME SIDE PRESSURE, EXTREMELY FAST OR SLOW BELTS, TEMPERATURE EXTREMES, CORROSIVE ATMOSPHERES, ETC., CONSULT MARTIN ENGINEERING
 - 12) SKIRTING AND WEARLINER™ SHOULD BEGIN AT LEAST 12"(305) PRIOR TO INLET SIDE OF TRANSFER CHUTE WALL.
 - 13) ANY DEVIATION IN MOUNTING, OTHER THAN SHOWN, CUSTOMER SHOULD CONSULT MARTIN ENGINEERING.
 - 14) CLAMP IS TO BE FULLY TIGHTENED AGAINST CHUTE WALL.
 - 15) CLAMP MUST HAVE FIRM BACKING TO INSURE PROPER CLAMP FORCE.

NOTE: REFER TO OPERATORS MANUAL DURING INSTALLATION.
 THIS IS NOT A SUBSTITUTE FOR OPERATORS MANUAL.

© Copyright 1996 Martin Engineering. All rights reserved. Covered by U.S. and foreign patents pending and issued. ® and ™ indicate trademarks of Martin Engineering.

MARTIN ENGINEERING
 NEPONSET ILLINOIS USA

| NO. | DESCRIPTION | ECN | DATE | BY | SALES DRAWING | TITLE | INSTALLATION DRAWING FOR ANGLE CLAMP SKIRTING SYSTEM | DRAWN CAH DATE 01/10/96 | CHECKED JLD DATE 05/10/01 | APPROVED JRB DATE 05/11/01 | SCALE 3/8 |
|---|--|------|----------|-----|---------------|---------------|--|-------------------------|---------------------------|----------------------------|-----------|
| E | CHANGED DIMENSION FROM 7.50 TO 7.60 (4 PLACES)/UPDATED P/N 32049 PICTORIALLY DUE TO CHANGE | 9929 | 05/02/01 | CGH | | | | | | | |
| D | CHGD DIM F/4.00 TO 5.88 | 8225 | 01/22/97 | SRS | | | | | | | |
| C | RDRN RMVD P/NS 32048-12R 33544-124 29080-02 10211B & INST INSTRUCT ADDED 35° 20° VIEWS | ---- | 01/10/96 | CAH | | | | | | | |
| REVISION SUPERCEDES C-SIZE DATED 07/26/90 | | | | | | L:\SAL\S32045 | | S32045 | | | |