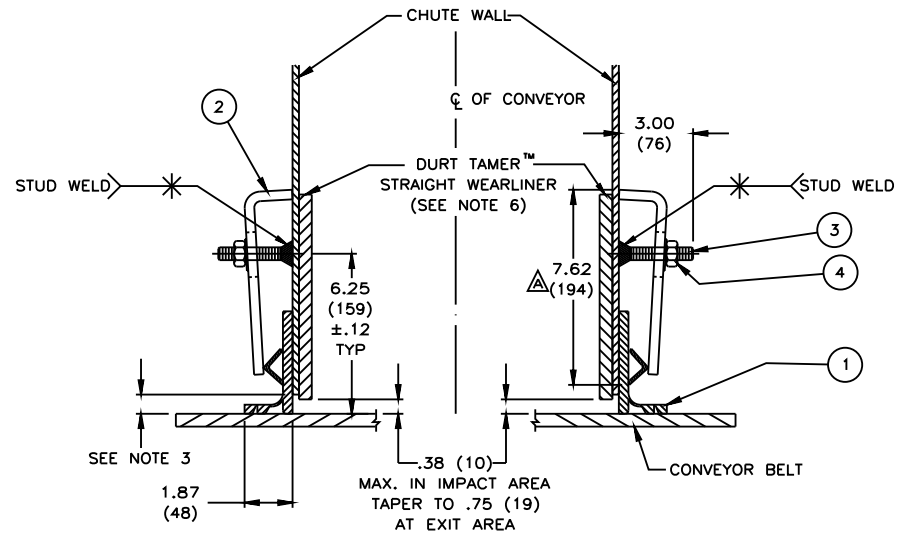
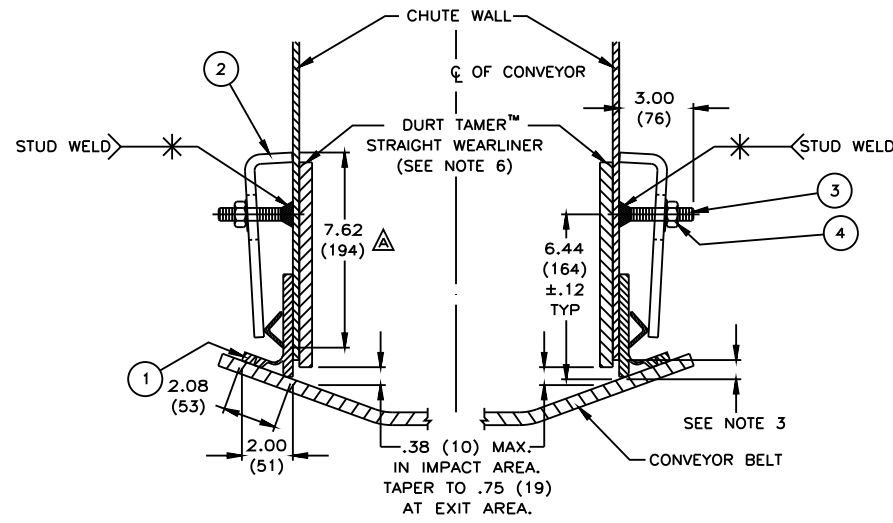
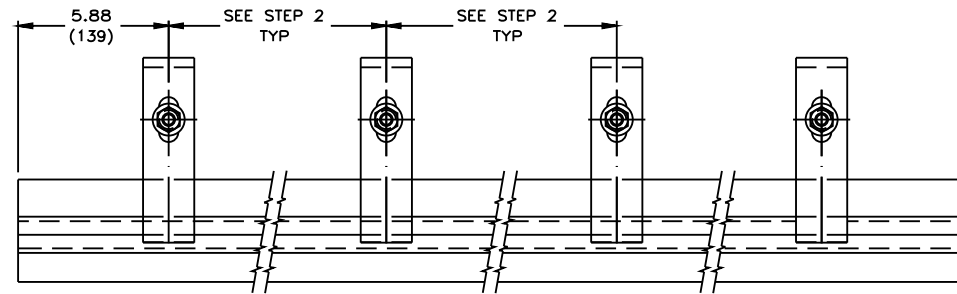


ITEM	QTY.	DESCRIPTION	PART NO.
1	12'-0" OR 24'-0"	1-PIECE APRON SEAL™	100724
2	6'-0" L.G.	ANGLE CLAMP WELDMENT	32049
3	1 PER EACH FT. OF SKIRTING	STUD 1/2-13NC x 3.00	31189
4	1 PER EACH FT. OF SKIRTING	NUT FLANGE LOCKING 1/2-13NC	18843



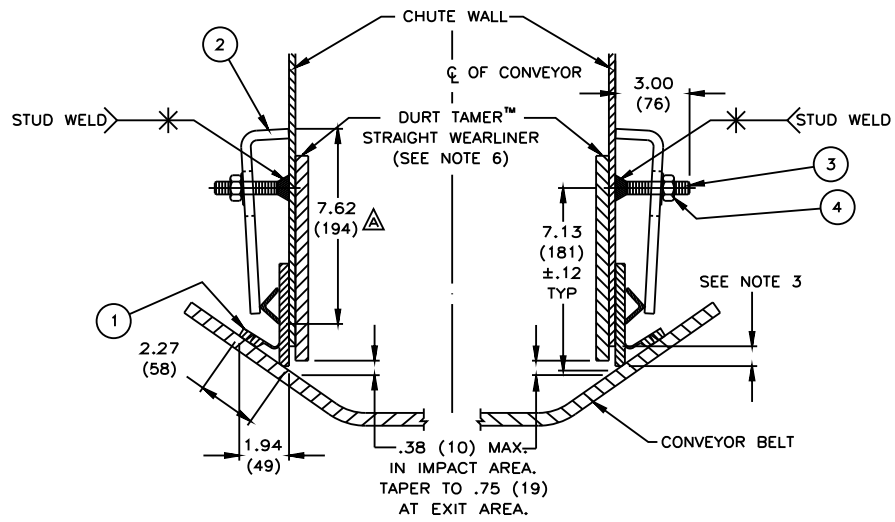
DETAIL FOR FLAT BELTS

NOTE:  
REFER TO OPERATOR'S MANUAL DURING INSTALLATION.  
THIS IS NOT A SUBSTITUTE FOR THE OPERATOR'S MANUAL.



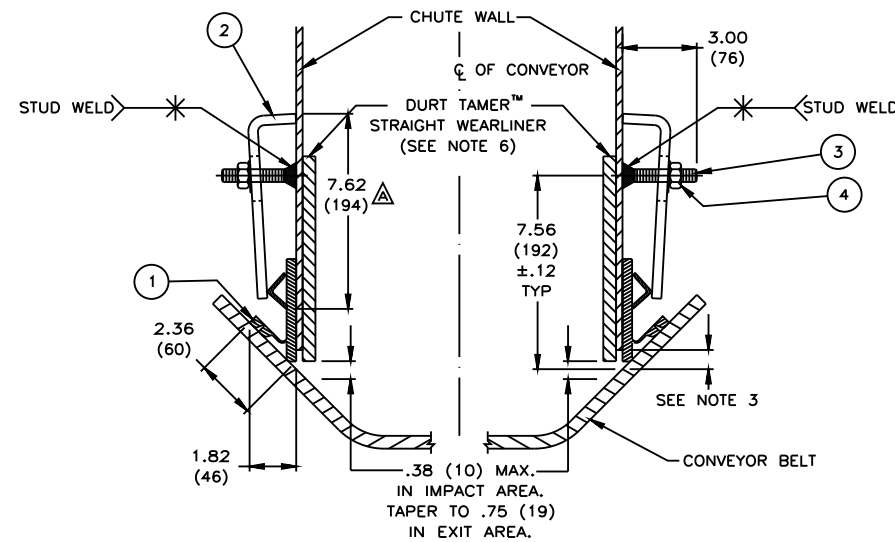
DETAIL FOR 20° BELTS

NOTE:  
REFER TO OPERATOR'S MANUAL DURING INSTALLATION.  
THIS IS NOT A SUBSTITUTE FOR THE OPERATOR'S MANUAL.



DETAIL FOR 35° BELTS

NOTE:  
REFER TO OPERATOR'S MANUAL DURING INSTALLATION.  
THIS IS NOT A SUBSTITUTE FOR THE OPERATOR'S MANUAL.



DETAIL FOR 45° BELTS

NOTE:  
REFER TO OPERATOR'S MANUAL DURING INSTALLATION.  
THIS IS NOT A SUBSTITUTE FOR THE OPERATOR'S MANUAL.

INSTALLATION INSTRUCTIONS

- STEP 1: SCRIBE A LINE ABOVE BELT ON CHUTE WALL PARALLEL TO BELT SURFACE AT DIMENSION SHOWN PER TROUGHING ANGLE.
- STEP 2: ALONG THIS LINE, MAKE FIRST MARK 5.88 (149) FROM END OF CHUTE WALL AND MARK EVERY 12.00 (305) AFTER THAT.
- STEP 3: ON THESE MARKED CENTERS, WELD 1/2-13NC x 3.00 STUDS. WHEN WELDING STUDS, MAKE SURE THAT THEY ARE WELDED PERPENDICULAR TO THE CHUTE WALL TO ENSURE EVEN CLAMP CONTACT.
- STEP 4: INSTALL 1-PIECE APRON SEAL™ AND PLACE AGAINST CHUTE WALL, MAKING SURE THAT SKIRTING IS ALSO TOUCHING THE BELT. SLIDE CLAMPS OVER STUDS.
- STEP 5: PUSH ANGLE CLAMP WELDMENT TIGHT AGAINST SKIRTING AND INSTALL LOCKING NUT. TIGHTEN LOCKING NUT TO 40 FT./LBS.
- STEP 6: IF SECONDARY SEAL OR RUBBER SEAL HANGS OVER EDGE OF BELT, TRIM SEAL BACK BY CUTTING OFF EACH RIB UNTIL SEAL NO LONGER HANGS OVER BELT EDGE. A MINIMUM OF ONE RIB MUST REMAIN FOR PROPER SEALING.

NOTES:

- 1) ALL DIMENSIONS ARE GIVEN IN INCHES (MM).
- 2) ALL DIMENSIONS ARE FOR REFERENCE PURPOSES ONLY.
- 3) MARTIN ENGINEERING RECOMMENDS CHUTE WALL BEING WITHIN .75 (19) OF BELT.
- 4) SKIRTING CAN BE ADJUSTED INDIVIDUALLY PER CLAMP TO MEET VARIATIONS IN BELT PROFILE.
- 5) A MIN. 8.00 (203) VERTICAL AND 4.00 (102) HORIZONTAL CLEARANCE REQUIRED TO INSTALL SKIRTING AND CLAMPS.
- 6) TO PROVIDE AN EFFECTIVE SEAL, DURT TAMER™ WEARLINERS ARE TO BE USED TO PREVENT THE MAIN LOAD FROM CONTACTING THE SKIRTING.
- 7) WHEN DURT TAMER™ WEARLINERS ARE BOLTED TO CHUTE WALL, SKIRTING AND CLAMPS ARE TO BE MOUNTED IN A MANNER AS TO ALLOW EASY ACCESS TO BOLTS.
- 8) SKIRTING IS DESIGNED TO SEAT IN QUICKLY REGARDLESS OF TROUGH ANGLE.
- 9) SKIRTING IS PLIABLE ENOUGH TO STRETCH OR BEND AROUND DURT TAMER™ WEARLINER BOLTS, SKIRTING CAN ALSO BE NOTCHED OUT AROUND BOLTS IF NECESSARY.
- 10) MARTIN 1-PIECE APRON SEAL™ SKIRTING IS DESIGNED AS A DUST SEAL. IT IS NOT DESIGNED AS A MATERIAL HOLDBACK OR LOAD CARRYING SURFACE.
- 11) CONVEYOR BELT MUST NOT LIFT OFF IDLERS DURING STARTUP OR WHILE BELT IS RUNNING.
- 12) BELT MUST TRACK PROPERLY TO PREVENT BELT FROM RUNNING BEHIND SKIRTING.
- 13) FOR INSTALLATIONS WITH UNUSUAL OR SEVERE CONDITIONS: I.E. CONCAVE/CONVEX CURVES, EXTREME SIDE PRESSURE, EXTREMELY FAST OR SLOW BELTS, TEMPERATURE EXTREMES, CORROSIVE ATMOSPHERES, ETC., CONSULT MARTIN ENGINEERING.
- 14) SKIRTING AND DURT TAMER™ WEARLINER SHOULD BEGIN AT LEAST 12.00 (305) PRIOR TO INLET SIDE OF TRANSFER CHUTE WALL.
- 15) ANY DEVIATION IN MOUNTING, OTHER THAN SHOWN, CUSTOMER SHOULD CONSULT MARTIN ENGINEERING.
- 16) CLAMP IS TO BE FULLY TIGHTENED AGAINST CHUTE WALL.
- 17) CLAMP MUST HAVE FIRM BACKING TO ENSURE PROPER CLAMP FORCE.
- 18) REFER TO OPERATORS MANUAL FOR ADDITIONAL INFORMATION.

© Copyright 1997 Martin Engineering. All rights reserved. Covered by U.S. and foreign patents pending and issued. ® and TM indicate trademarks of Martin Engineering.

	MARTIN ENGINEERING	NEPONSET ILLINOIS USA	DRAWN TEV DATE 04/03/97
TITLE			ENG. DATE

INSTALLATION DRAWING FOR ANGLE CLAMP WITH 1-PIECE APRON SEAL™ AND STRAIGHT WEARLINER			ENG. DATE
NO. DESCRIPTION			I.E. DATE

CHG DIM FROM 7.50 TO 7.62 (4 PLACES)/CHG P/N FROM 33544-XXXX TO 100724/UPDATED P/N 32049 PICTORALLY DUE TO CHG	9929	05/02/01	CGH
NO.	DESCRIPTION	ECN	DATE
	REVISION	BY	DATE

DRAWING NUMBER	S35064	APPROVED DATE	SCALE 1/4=1
M00316			
L:\SAL\S35064			