

MAINFRAME ASM PART NUMBER	BELT WIDTH	FRAME LENGTH	BLADE COVERAGE	QUANTITY ITEM 3
21042-54X	54.00 [1400-1600]	89.00 [2261]	50.50 [1283]	12
21042-60X	60.00 [1600-1800]	96.00 [2438]	54.50 [1385]	13
21042-66X	66.00 [1600-1800]	110.00 [2794]	62.50 [1588]	15
21042-72X	72.00 [1800-2000]	110.00 [2794]	66.50 [1689]	16
21042-78X	78.00 [1800-2000]	114.00 [2896]	74.50 [1892]	18
21042-84X	84.00 [2000-2200]	120.00 [3048]	78.50 [1994]	19
21042-96X	96.00 [2200-2400]	132.00 [3353]	90.50 [2299]	22

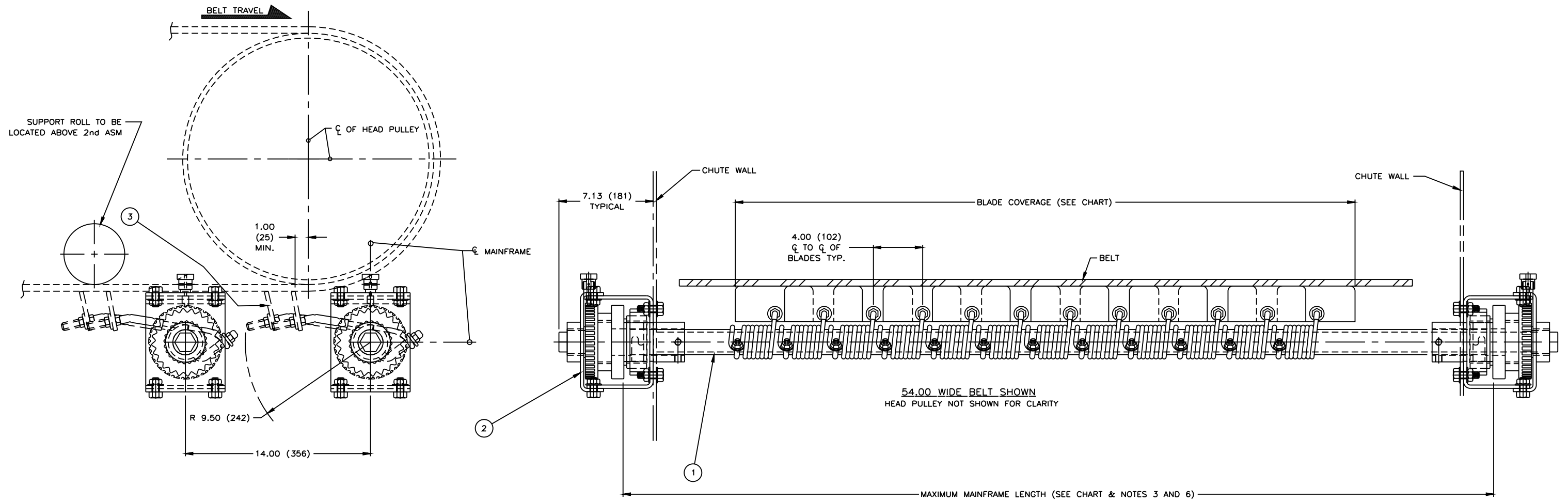
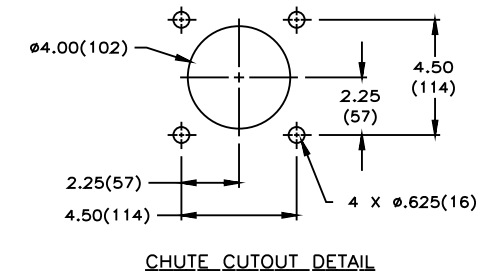
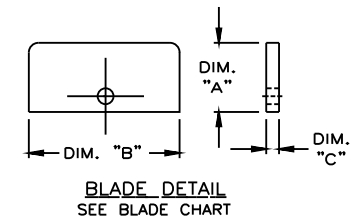
BLADE CHART - ITEM 3

ASSEMBLY PART NUMBER	SEE BLADE DETAIL			MATERIAL	ITEM 3 PART NO.
	DIM "A"	DIM "B"	DIM "C"		
21042-XXS	3.00 [76]	6.50 [165]	.19 [5]	STAINLESS STEEL	16960
21042-XXC	2.63 [67]	6.00 [152]	.72 [18]	CERAMIC *	17094
21042-XXT	3.00 [76]	6.50 [165]	.25 [6]	SINGLE EDGE TUNGSTEN CARBIDE	27924
21042-XXD	4.50 [114]	6.50 [165]	.25 [6]	DOUBLE EDGE TUNGSTEN CARBIDE	28020
21042-XXU	3.13 [80]	6.50 [165]	.72 [18]	URETHANE *	16943
21042-XXH	3.00 [76]	6.50 [165]	.25 [6]	HEAT TREATED	24259

ITEM	QTY.	DESCRIPTION	PART NUMBER
1	1	PM BELT CLEANER MAINFRAME ASM	21042-XXX
2	1	TWIST TENSIONER DUAL ASSEMBLY	31443-2R
3	SEE CHART	BLADE CLEANER	SEE BLD CHART

* INDICATES THE BLADES WITH STAINLESS STEEL HOLDERS

- NOTES:
- 1) ALL DIMENSIONS ARE GIVEN IN INCHES (MM) AND ARE FOR REFERENCE ONLY.
 - 2) FIRST -XX INDICATES BELT WIDTH, LAST X INDICATES BLADE TYPE.
 - 3) WHERE EXTREME OR UNUSUAL CONDITIONS EXIST, OR SPECIAL MAINFRAME LENGTHS ARE REQUIRED, CONSULT MARTIN ENGINEERING FOR ASSISTANCE.
 - 4) TENSIONER MAY BE BOLTED OR WELDED IN PLACE. MARTIN ENGINEERING RECOMMENDS BOLTING WHEN APPLICABLE FOR EASIER MAINTENANCE AND ACCESSIBILITY.
 - 5) REFER TO OPERATOR'S MANUAL (P/N: M3296) FOR INSTALLATION DETAILS.
 - 6) FRAME IS LONGER THAN REQUIRED. CUT IN FIELD TO DESIRED LENGTH.



© Copyright 1998 Martin Engineering. All rights reserved. Covered by U.S. and foreign patents pending and issued. ® and TM indicate trademarks of Martin Engineering.

MARTIN ENGINEERING
NEPONSET ILLINOIS USA

TITLE	DUAL PM BELT CLEANER MAINFRAME ASM WITH DUAL TWIST TENSIONER	DRAWN	K.J.C.
DATE	10/28/98	CHECKED	
APPROVED DATE		SCALE	1/4

A	RMVD P/N 21042-XXR FROM THE CHART	----	12/21/07	MJB
NO.	DESCRIPTION	ECN	DATE	BY
	REVISION			

SALES DRAWING L:\SAL\S35409-2 S35409-2