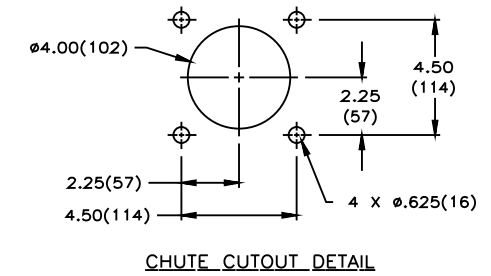
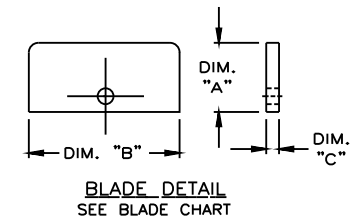


MAINFRAME ASM PART NUMBER	BELT WIDTH	FRAME LENGTH	BLADE COVERAGE	QUANTITY ITEM 3
21042-54X	54.00 (1400-1600)	89.00 (2261)	50.50 (1283)	12
21042-60X	60.00 (1600-1800)	96.00 (2438)	54.50 (1385)	13
21042-66X	66.00 (1600-1800)	110.00 (2794)	62.50 (1588)	15
21042-72X	72.00 (1800-2000)	110.00 (2794)	66.50 (1689)	16
21042-78X	78.00 (1800-2000)	114.00 (2896)	74.50 (1892)	18
21042-84X	84.00 (2000-2200)	120.00 (3048)	78.50 (1994)	19
21042-96X	96.00 (2200-2400)	132.00 (3353)	90.50 (2299)	22

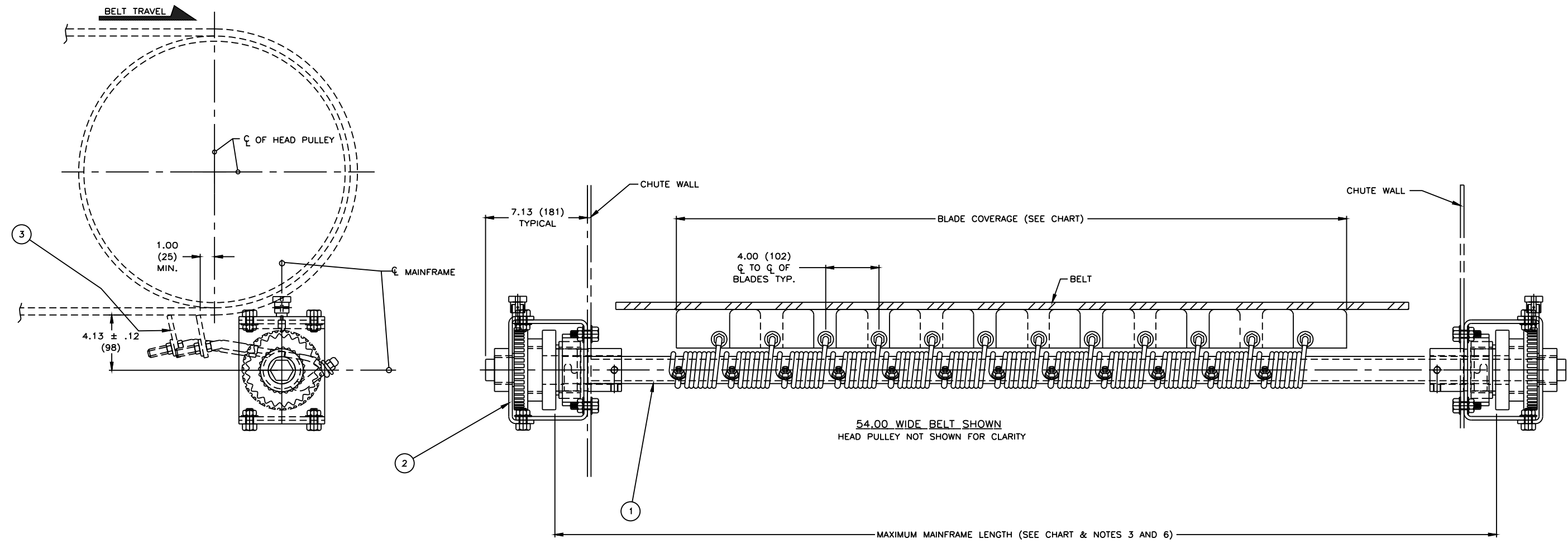
BLADE CHART - ITEM 3					
ASSEMBLY PART NUMBER	SEE BLADE DETAIL			MATERIAL	ITEM 3 PART NO.
	DIM "A"	DIM "B"	DIM "C"		
21042-XXS	3.00 (76)	6.50 (165)	.19 (5)	STAINLESS STEEL	16960
21042-XXC	2.63 (67)	6.00 (152)	.72 (18)	CERAMIC *	17094
21042-XXT	3.00 (76)	6.50 (165)	.25 (6)	SINGLE EDGE TUNGSTEN CARBIDE	27924
21042-XXD	4.50 (114)	6.50 (165)	.25 (6)	DOUBLE EDGE TUNGSTEN CARBIDE	28020
21042-XXU	3.13 (80)	6.50 (165)	.72 (18)	URETHANE *	16943
21042-XXH	3.00 (76)	6.50 (165)	.25 (6)	HEAT TREATED	24259

ITEM	QTY.	DESCRIPTION	PART NUMBER
1	1	PM BELT CLEANER MAINFRAME ASM	21042-XXX
2	1	TWIST TENSIONER DUAL ASSEMBLY	31443-2R
3	SEE CHART	BLADE CLEANER	SEE BLD CHART

△ * INDICATES THE BLADES WITH STAINLESS STEEL HOLDERS



- NOTES:
- 1) ALL DIMENSIONS ARE GIVEN IN INCHES (MM) AND ARE FOR REFERENCE ONLY.
 - 2) FIRST -XX INDICATES BELT WIDTH, LAST X INDICATES BLADE TYPE.
 - 3) WHERE EXTREME OR UNUSUAL CONDITIONS EXIST, OR SPECIAL MAINFRAME LENGTHS ARE REQUIRED, CONSULT MARTIN ENGINEERING FOR ASSISTANCE.
 - 4) TENSIONER MAY BE BOLTED OR WELDED IN PLACE. MARTIN ENGINEERING RECOMMENDS BOLTING WHEN APPLICABLE FOR EASIER MAINTENANCE AND ACCESSIBILITY.
 - 5) REFER TO OPERATOR'S MANUAL (P/N: M3296) FOR INSTALLATION DETAILS.
 - 6) FRAME IS LONGER THAN REQUIRED. CUT IN FIELD TO DESIRED LENGTH.



© Copyright 1998 Martin Engineering. All rights reserved. Covered by U.S. and foreign patents pending and issued. ® and TM indicate trademarks of Martin Engineering.

MARTIN ENGINEERING NEPONSET ILLINOIS USA

TITLE: PM BELT CLEANER MAINFRAME ASM WITH DUAL TWIST TENSIONER

DRAWN: K.J.C. DATE: 02/04/98

CHECKED: [Signature] DATE: 02/05/98

APPROVED: [Signature] DATE: 02/05/98

SALES DRAWING L:\SAL\S35409 S35409 SCALE 1/4

NO.	DESCRIPTION	ECN	DATE	BY
A	RMVD P/N 21042-XXR FROM THE CHART	----	12/20/07	MJB
	REVISION			