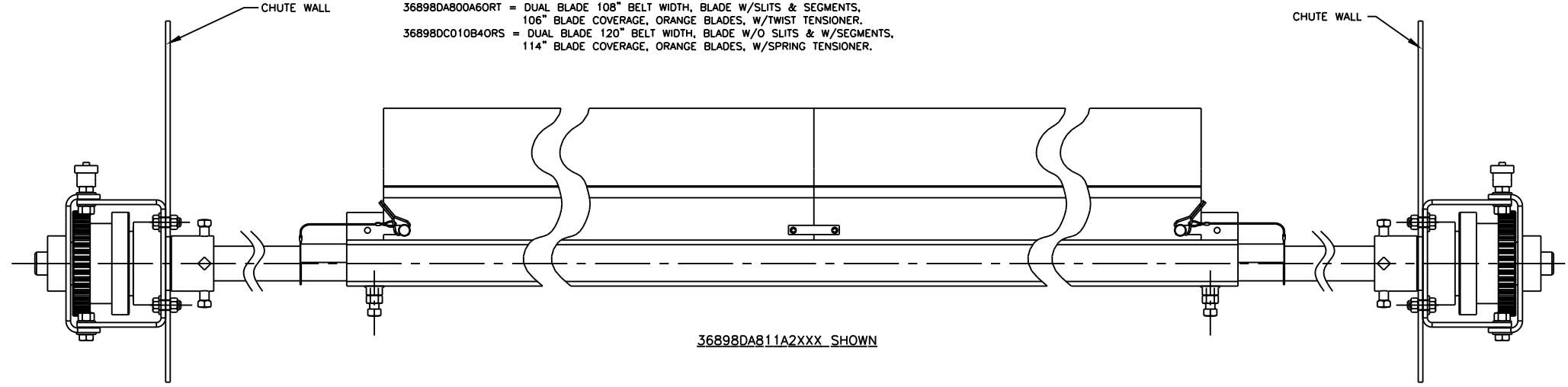
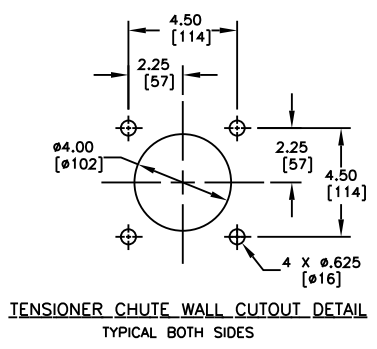
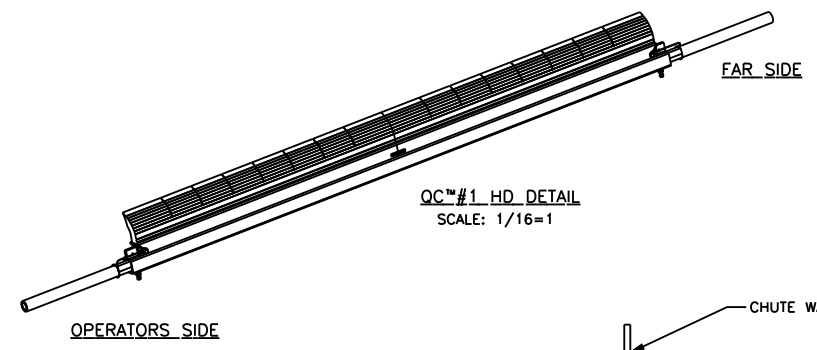
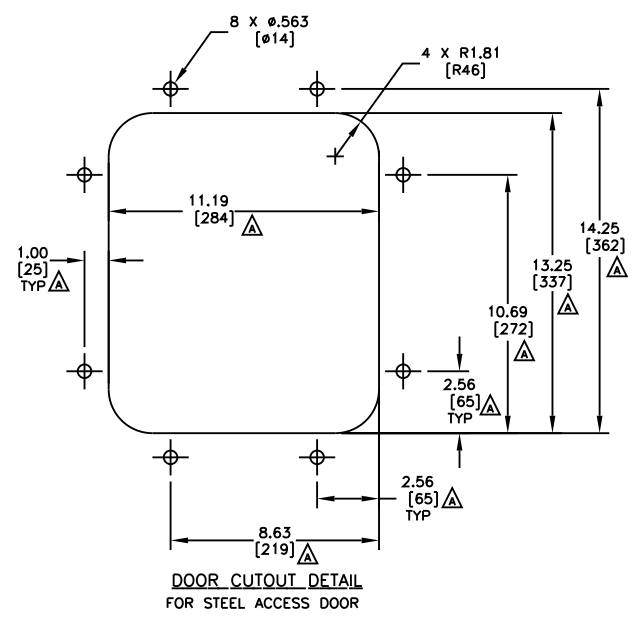


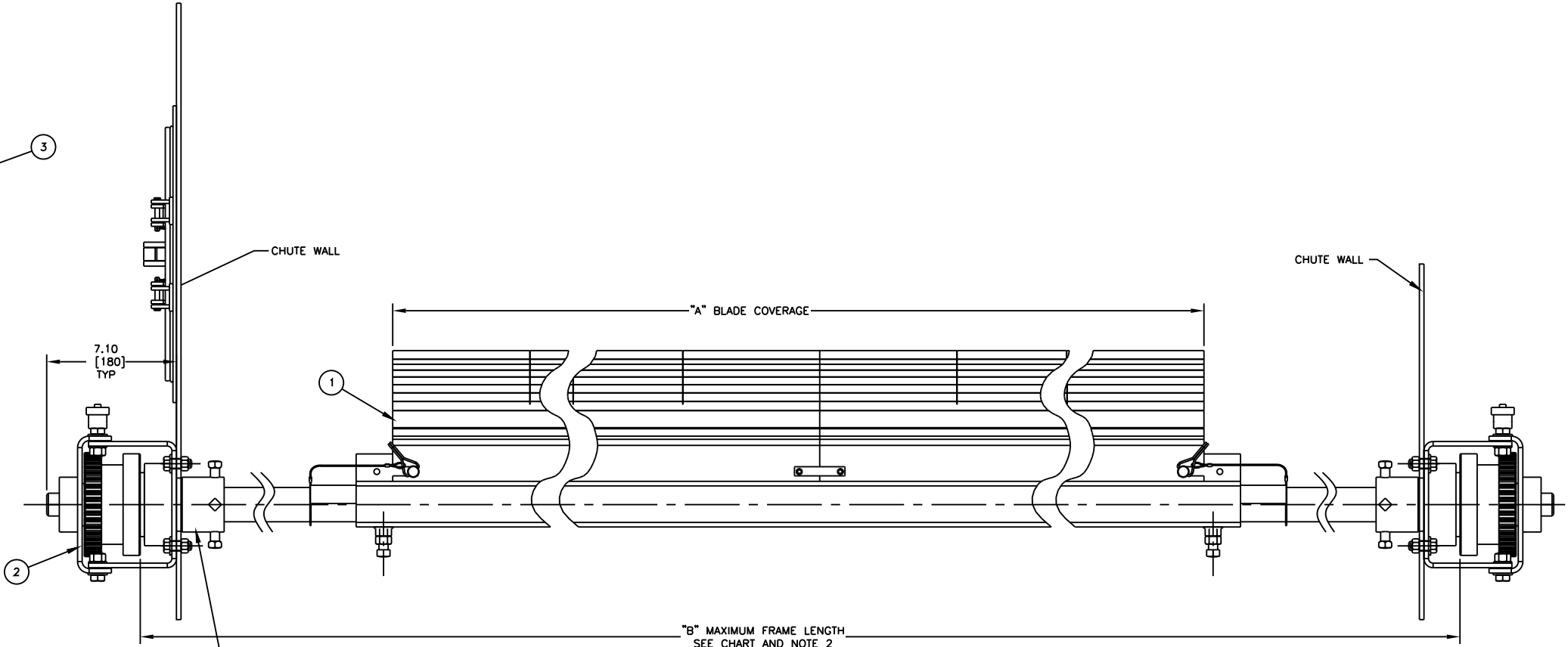
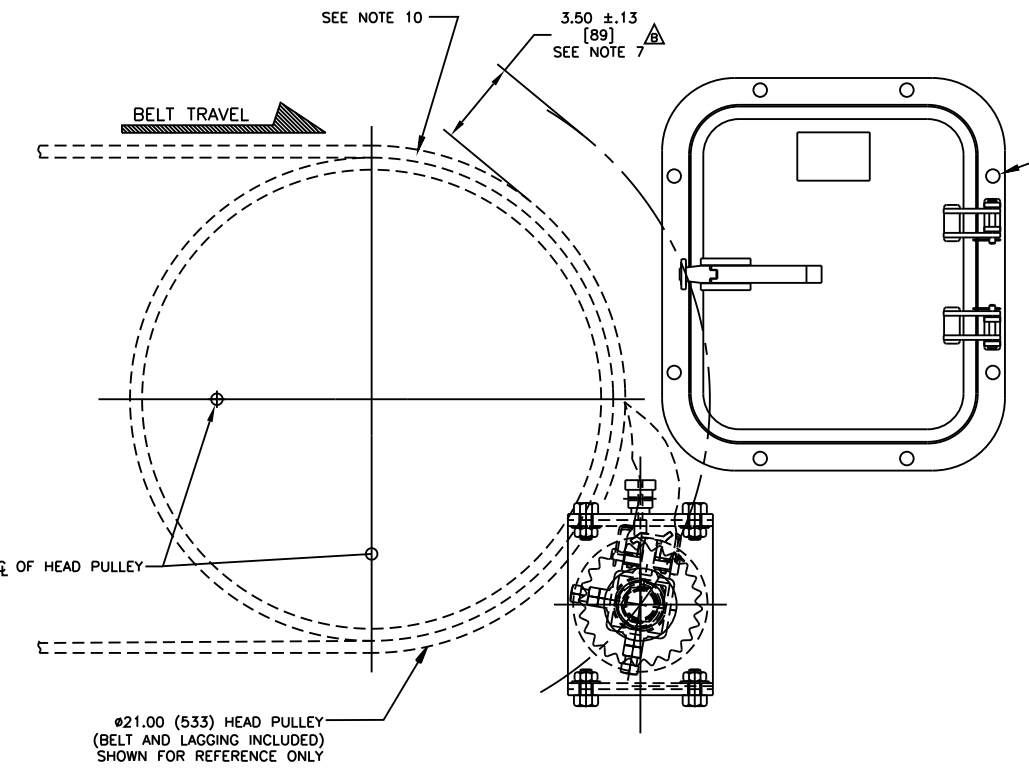
PART NUMBER	BELT WIDTH	DIMENSION "A" BLADE COVERAGE	DIMENSION "B" FRAME LENGTH
36898DA8XA2XXX	108.00 [2600-2800]	102.00 [2591]	147.00 [3734]
36898DA8XA6XXX	108.00 [2600-2800]	106.00 [2692]	147.00 [3734]
36898DC0XB4XXX	120.00 [2800-3000]	114.00 [2896]	159.00 [4039]

ITEM	QTY.	DESCRIPTION	PART NUMBER
1	1	MARTIN® QC™ #1 HD DUAL BLD MNFRM ASM	36898DXXXXXXX
2	1	MARTIN® TWIST™ DUAL TENSIONER ASM	31443-2R
3	1	MARTIN® LOW PROFILE STL DOOR 12X14	CYA-1214



NOTES:  
 1) ALL DIMENSIONS ARE GIVEN IN INCHES (MM) AND ARE FOR REFERENCE ONLY.  
 2) FRAME IS ADJUSTABLE TO DESIRED LENGTH.  
 3) THE "D" AFTER THE 5 DIGIT P/N INDICATES DOUBLE BLADE.  
 THE FIRST TWO XX'S INDICATE BELT WIDTH: A=10, B=11, C=12:  
 EXAMPLE: AB = 108 ; B4 = 114 ; C0 = 120.  
 THE THIRD X INDICATES A BLADE WITH (0) OR WITHOUT (1) SLITS.  
 THE FOURTH X INDICATES A BLADE WITH (0) OR WITHOUT (1) SEGMENTS.  
 THE FIFTH AND SIXTH XX'S INDICATE BLADE COVERAGE: A=10, B=11, C=12:  
 EXAMPLE: A2 = 102 ; A6 = 106 ; B4 = 114 ; C0 = 120.  
 THE SEVENTH AND EIGHT XX'S INDICATE BLADE COLOR (SEE CHART).  
 THE NINTH X INDICATES IF A TENSIONER IS INCLUDED:  
 EXAMPLE (T=TWIST TENSIONER) AND (S=SPRING TENSIONER).  
 ASSEMBLY EXAMPLES:  
 36898DA811A2NB = DUAL BLADE 108" BELT WIDTH, SOLID BLADE, 102" BLADE COVERAGE, NAVY BLUE BLADES, W/O TENSIONER.  
 36898DA800A6ORT = DUAL BLADE 108" BELT WIDTH, BLADE W/SLITS & SEGMENTS, 106" BLADE COVERAGE, ORANGE BLADES, W/TWIST TENSIONER.  
 36898DC010B4ORS = DUAL BLADE 120" BELT WIDTH, BLADE W/O SLITS & W/SEGMENTS, 114" BLADE COVERAGE, ORANGE BLADES, W/SPRING TENSIONER.

NOTES (CONT'D):  
 4) WHERE EXTREME OR UNUSUAL CONDITIONS EXIST, OR SPECIAL MAINFRAME LENGTHS ARE REQUIRED, CONSULT MARTIN ENGINEERING FOR ASSISTANCE.  
 5) TWIST TENSIONER ASSEMBLY MAY BE BOLTED OR WELDED IN PLACE. MARTIN ENGINEERING RECOMMENDS BOLTING WHEN APPLICABLE FOR EASIER MAINTENANCE AND ACESABILITY.  
 6) REFER TO OPERATOR'S MANUALS (M3296 AND M3618) FOR INSTALLATION INSTRUCTIONS.  
 7) MARTIN ENGINEERING RECOMMENDS THE CLEANER BE LOCATED SO THAT THE BLADE TIP IS AT OR SLIGHTLY BELOW HORIZONTAL CENTERLINE OF HEAD PULLEY. CLEANER IS SHOWN BELOW IN RECOMMENDED WORKING POSITION.  
 8) FOR SEVERE APPLICATIONS WELD MAINFRAME ADAPTER DIRECTLY TO MAINFRAME.  
 9) THE QC™ #1 HD PRE-CLEANER BLADE IS DESIGNED TO REMOVE INITIAL CARRYBACK ONLY. DO NOT OVERTENSION!  
 10) THE QC™ #1 HD PRE-CLEANER BLADE IS DESIGNED FOR HEAD PULLEYS WITH A MINIMUM EFFECTIVE DIAMETER OF 12.00 (305).



36898DA810A2XXX SHOWN  
 HEAD PULLEY NOT SHOWN FOR CLARITY

© Copyright 2008 Martin Engineering. All rights reserved. Covered by U.S. and foreign patents pending and issued. ® and TM indicate trademarks of Martin Engineering.

**MARTIN ENGINEERING**  
 NEPONSET ILLINOIS USA

NO.	DESCRIPTION	ECN	DATE	BY
B	REV W/ MOUNTING LOCATION CHART/CHG DIM FROM 4.00 TO 3.50 (12 THRU 15) CHG 17/1 FROM 34955-1214 TO CYA-1214 IN BOM/CHG DIM'S ON CHUTE CUTOUT DETAIL FROM 11.69 TO 11.19, .75 TO 1.00, 2.61 TO 2.06 (2), 8.88 TO 8.63, 10.94 TO 10.69, 13.75 TO 13.25 & 14.20 TO 14.25	12821	03/18/10	MJB
A		12561	10/21/09	MJB

TITLE	DATE	BY	CHKD	APP'D
MARTIN® QC™ #1 HD DUAL BLD ASM W/TWIST™ DUAL TENSIONER 12 X 14 STEEL ACCESS DOOR	11/05/08	MJB		
SALES DRAWING				