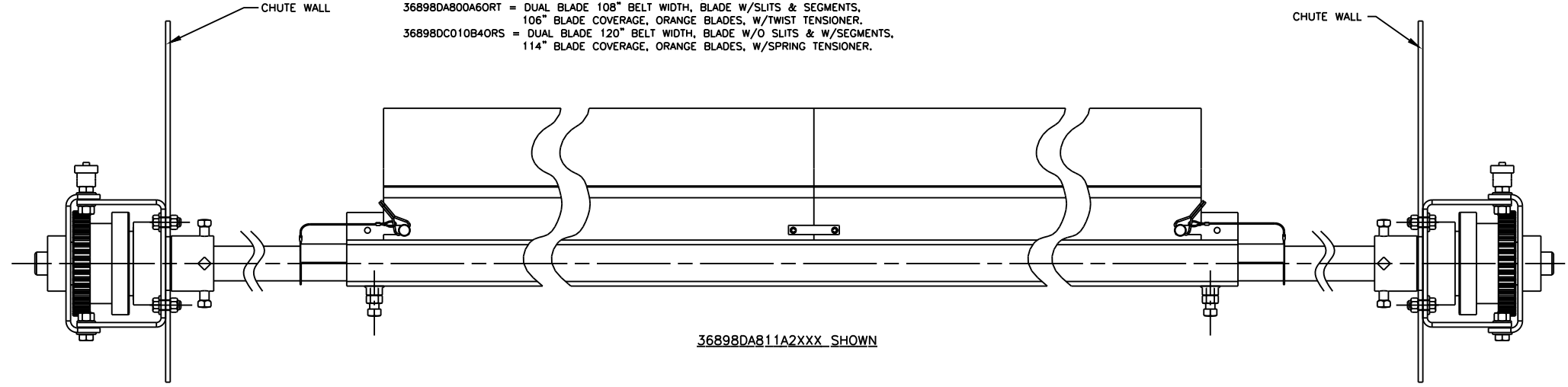
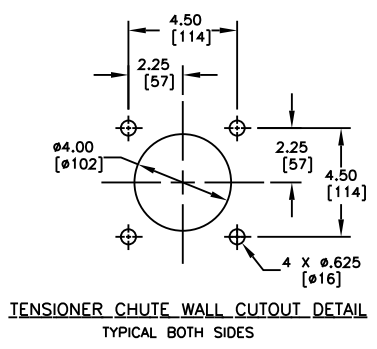
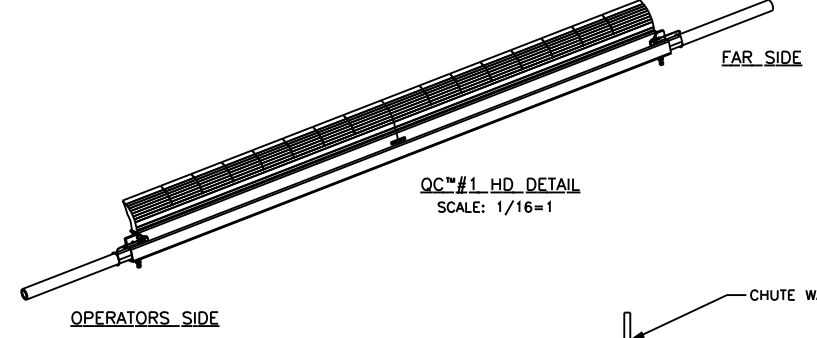
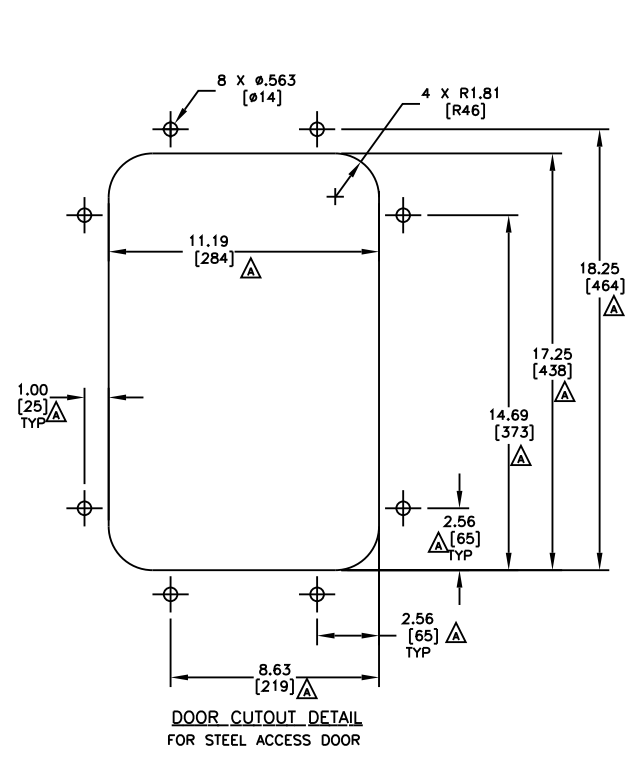


PART NUMBER	BELT WIDTH	DIMENSION "A" BLADE COVERAGE	DIMENSION "B" FRAME LENGTH
36898DA8XA2XXX	108.00 [2600-2800]	102.00 [2591]	147.00 [3734]
36898DA8XA6XXX	108.00 [2600-2800]	106.00 [2692]	147.00 [3734]
36898DC0XB4XXX	120.00 [2800-3000]	114.00 [2896]	159.00 [4039]

ITEM	QTY.	DESCRIPTION	PART NUMBER
1	1	MARTIN <sup>®</sup> QC <sup>™</sup> #1 HD DUAL BLD MNFRM ASM	36898DXXXXXXX
2	1	MARTIN <sup>®</sup> TWIST <sup>™</sup> DUAL TENSIONER ASM	31443-2R
3	1	MARTIN <sup>®</sup> LOW PROFILE STL DOOR 12X18	CYA-1218



**NOTES:**

- 1) ALL DIMENSIONS ARE GIVEN IN INCHES (MM) AND ARE FOR REFERENCE ONLY.
- 2) FRAME IS ADJUSTABLE TO DESIRED LENGTH.
- 3) THE "D" AFTER THE 5 DIGIT P/N INDICATES DOUBLE BLADE.  
THE FIRST TWO XX'S INDICATE BELT WIDTH: A=10, B=11, C=12:  
EXAMPLE: AB = 108 ; B4 = 114 ; C0 = 120.  
THE THIRD X INDICATES A BLADE WITH (0) OR WITHOUT (1) SLITS.  
THE FOURTH X INDICATES A BLADE WITH (0) OR WITHOUT (1) SEGMENTS.  
THE FIFTH AND SIXTH XX'S INDICATE BLADE COVERAGE: A=10, B=11, C=12:  
EXAMPLE: A2 = 102 ; A6 = 106 ; B4 = 114 ; C0 = 120.  
THE SEVENTH AND EIGHT XX'S INDICATE BLADE COLOR (SEE CHART).  
THE NINTH X INDICATES IF A TENSIONER IS INCLUDED:  
EXAMPLE (T=TWIST TENSIONER) AND (S=SPRING TENSIONER).

**ASSEMBLY EXAMPLES:**

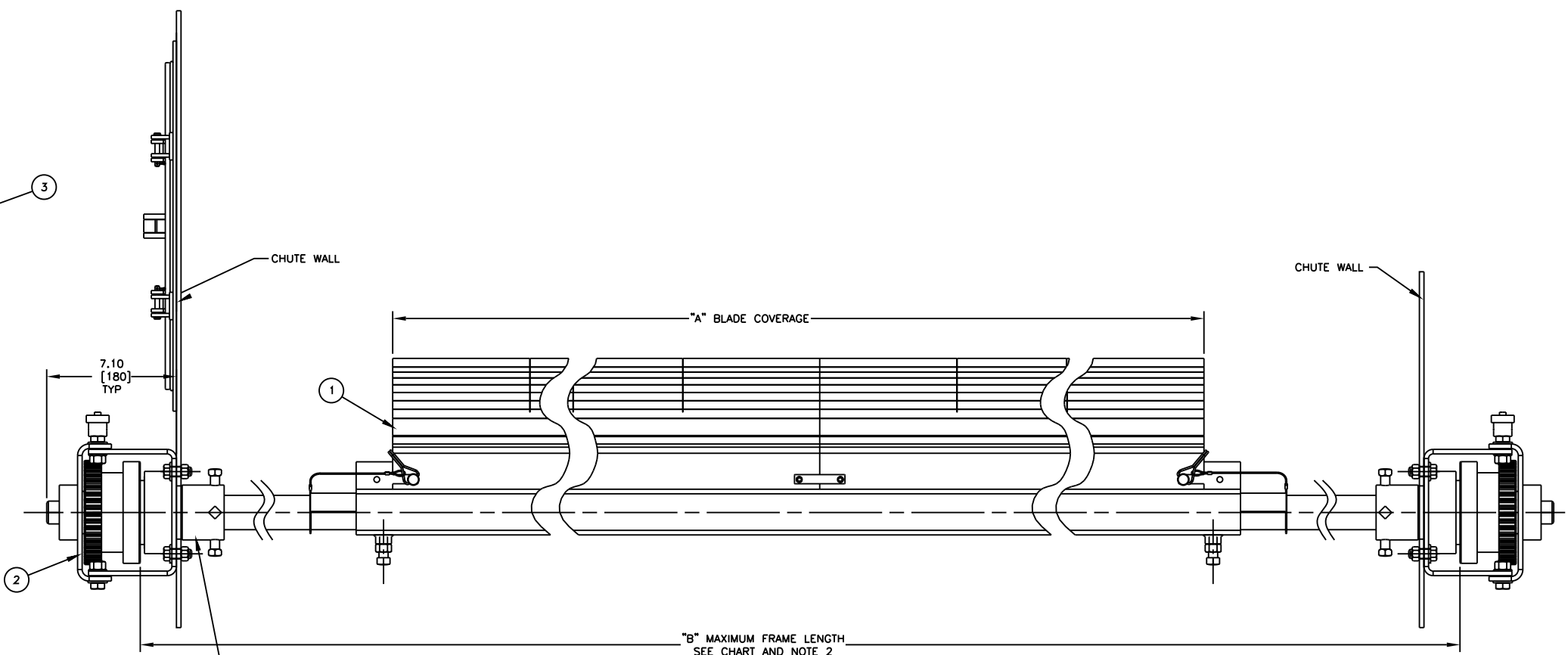
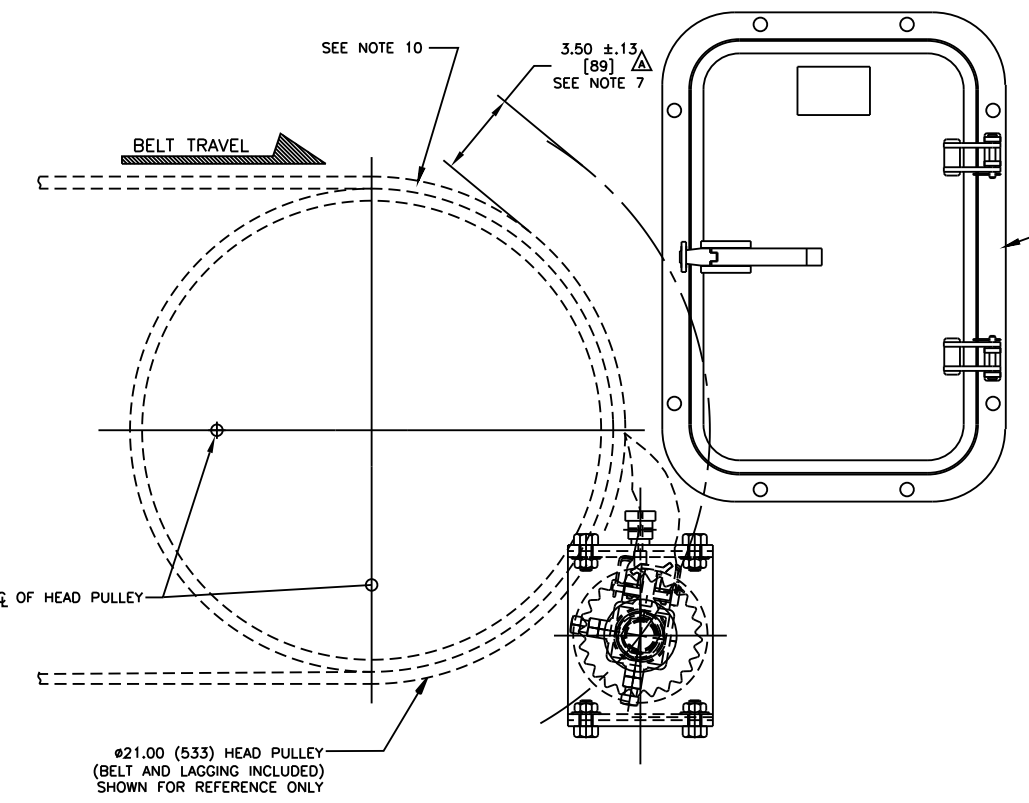
36898DA811A2NB = DUAL BLADE 108" BELT WIDTH, SOLID BLADE, 102" BLADE COVERAGE, NAVY BLUE BLADES, W/O TENSIONER.

36898DA800A6ORT = DUAL BLADE 108" BELT WIDTH, BLADE W/SLITS & SEGMENTS, 106" BLADE COVERAGE, ORANGE BLADES, W/TWIST TENSIONER.

36898DC010B4ORS = DUAL BLADE 120" BELT WIDTH, BLADE W/O SLITS & W/SEGMENTS, 114" BLADE COVERAGE, ORANGE BLADES, W/SPRING TENSIONER.

**NOTES (CONT'D):**

- 4) WHERE EXTREME OR UNUSUAL CONDITIONS EXIST, OR SPECIAL MAINFRAME LENGTHS ARE REQUIRED, CONSULT MARTIN ENGINEERING FOR ASSISTANCE.
- 5) TWIST TENSIONER ASSEMBLY MAY BE BOLTED OR WELDED IN PLACE. MARTIN ENGINEERING RECOMMENDS BOLTING WHEN APPLICABLE FOR EASIER MAINTENANCE AND ACESABILITY.
- 6) REFER TO OPERATOR'S MANUALS (M3296 AND M3618) FOR INSTALLATION INSTRUCTIONS.
- 7) MARTIN ENGINEERING RECOMMENDS THE CLEANER BE LOCATED SO THAT THE BLADE TIP IS AT OR SLIGHTLY BELOW HORIZONTAL CENTERLINE OF HEAD PULLEY. CLEANER IS SHOWN BELOW IN RECOMMENDED WORKING POSITION.
- 8) FOR SEVERE APPLICATIONS WELD MAINFRAME ADAPTER DIRECTLY TO MAINFRAME.
- 9) THE QC#1 HD PRE-CLEANER BLADE IS DESIGNED TO REMOVE INITIAL CARRYBACK ONLY. DO NOT OVERTENSION!
- 10) THE QC#1 HD PRE-CLEANER BLADE IS DESIGNED FOR HEAD PULLEYS WITH A MINIMUM EFFECTIVE DIAMETER OF 12.00 (305).



© Copyright 2007 Martin Engineering. All rights reserved. Covered by U.S. and foreign patents pending and issued. ® and ™ indicate trademarks of Martin Engineering.

**MARTIN ENGINEERING** NEPONSET ILLINOIS USA

NO.	DESCRIPTION	ECN	DATE	BY
B	REV MOUNTING LOCATION CHART/CHG DIM FROM 4.00 TO 3.50 (12 THRU 15) CHG 17/1 FROM 36895-1218 TO CYA-1218 IN BOM/CHG DIM'S ON CHUTE CUTOUT DETAIL FROM 18.50 TO 18.25, .75 TO 1.00, 2.61 TO 2.56 (2), 8.88 TO 8.63, 11.69 TO 11.19, 17.75 TO 17.25 & 14.94 TO 14.69	12821	03/18/10	MJB
A		12561	10/21/09	MJB

TITLE	DATE	BY
MARTIN <sup>®</sup> QC <sup>™</sup> #1 HD DUAL BLD ASM W/DUAL TWIST <sup>™</sup> TENSIONER 12 X 18 STEEL ACCESS DOOR	08/06/07	MJB
SALES DRAWING	08/09/07	MJB
MD729	08/10/07	MJB

DRAWN MJB  
DATE 08/06/07  
CHECKED  
ENG. 325  
DATE 08/09/07  
APPROVED MJB  
DATE 08/10/07  
SCALE 1/4=1