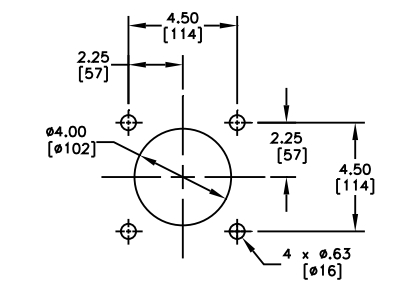
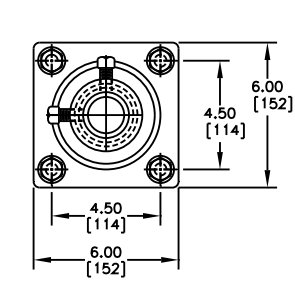


PART NO.	BELT WIDTH	DIMENSION "A" BLADE COVERAGE	DIMENSION "B" FRAME LENGTH
36898-18XX12XXX	18.00 [400-500]	12.00 [305]	44.00 [1118]
36898-18XX16XXX	18.00 [400-500]	16.00 [406]	44.00 [1118]
36898-24XX18XXX	24.00 [500-650]	18.00 [457]	50.00 [1270]
36898-24XX22XXX	24.00 [500-650]	22.00 [559]	50.00 [1270]
36898-30XX24XXX	30.00 [650-800]	24.00 [610]	62.00 [1575]
36898-30XX28XXX	30.00 [650-800]	28.00 [711]	62.00 [1575]
36898-36XX30XXX	36.00 [800-1000]	30.00 [762]	68.00 [1727]
36898-36XX34XXX	36.00 [800-1000]	34.00 [864]	68.00 [1727]
36898-42XX36XXX	42.00 [1000-1200]	36.00 [914]	74.00 [1880]
36898-42XX40XXX	42.00 [1000-1200]	40.00 [1016]	74.00 [1880]
36898-48XX42XXX	48.00 [1200-1400]	42.00 [1067]	80.00 [2032]
36898-48XX46XXX	48.00 [1200-1400]	46.00 [1168]	80.00 [2032]
36898-54XX48XXX	54.00 [1400-1600]	48.00 [1219]	86.00 [2184]
36898-54XX52XXX	54.00 [1400-1600]	52.00 [1321]	86.00 [2184]
36898-60XX54XXX	60.00 [1600-1800]	54.00 [1372]	98.00 [2489]
36898-60XX58XXX	60.00 [1600-1800]	58.00 [1473]	98.00 [2489]
36898-66XX60XXX	66.00 [1600-1800]	60.00 [1524]	104.00 [2642]
36898-66XX64XXX	66.00 [1600-1800]	64.00 [1626]	104.00 [2642]
36898-72XX66XXX	72.00 [1800-2000]	72.00 [1829]	110.00 [2794]
36898-72XX70XXX	72.00 [1800-2000]	76.00 [1930]	110.00 [2794]
36898-78XX72XXX	78.00 [2000-2100]	78.00 [1981]	117.00 [2972]
36898-78XX76XXX	78.00 [2000-2100]	82.00 [2083]	117.00 [2972]
36898-84XX78XXX	84.00 [2100-2200]	84.00 [2134]	123.00 [3124]
36898-84XX82XXX	84.00 [2100-2200]	88.00 [2236]	123.00 [3124]
36898-96XX90XXX	96.00 [2200-2400]	90.00 [2287]	135.00 [3429]
36898-96XX94XXX	96.00 [2200-2400]	94.00 [2388]	135.00 [3429]

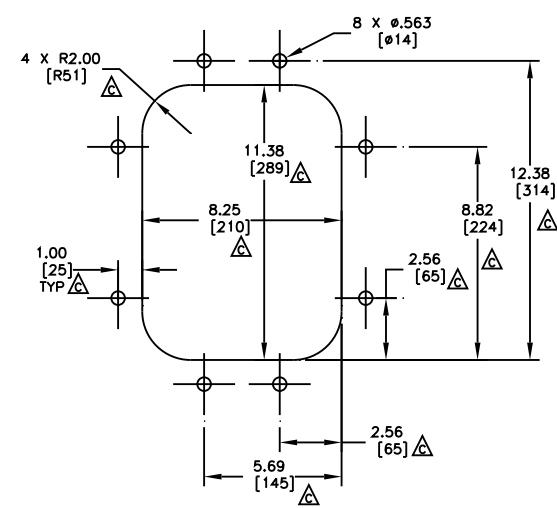
* = SEE NOTE 5



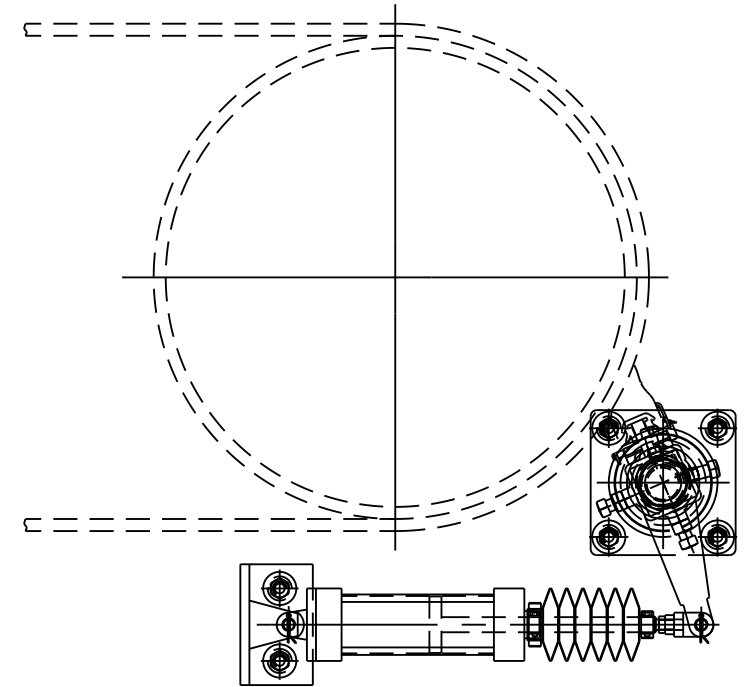
TENSIONER CHUTE WALL CUTOUT DETAIL
TYPICAL BOTH SIDES



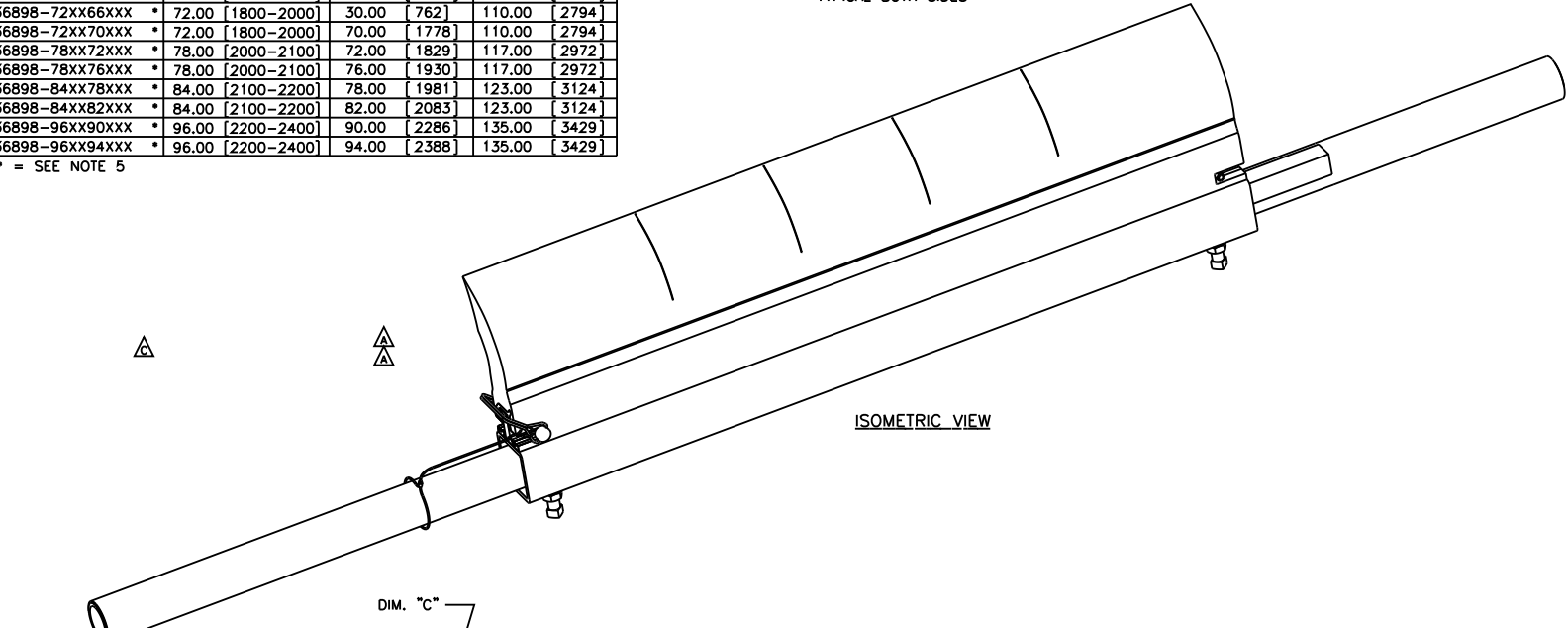
FARSIDE MOUNT DETAIL



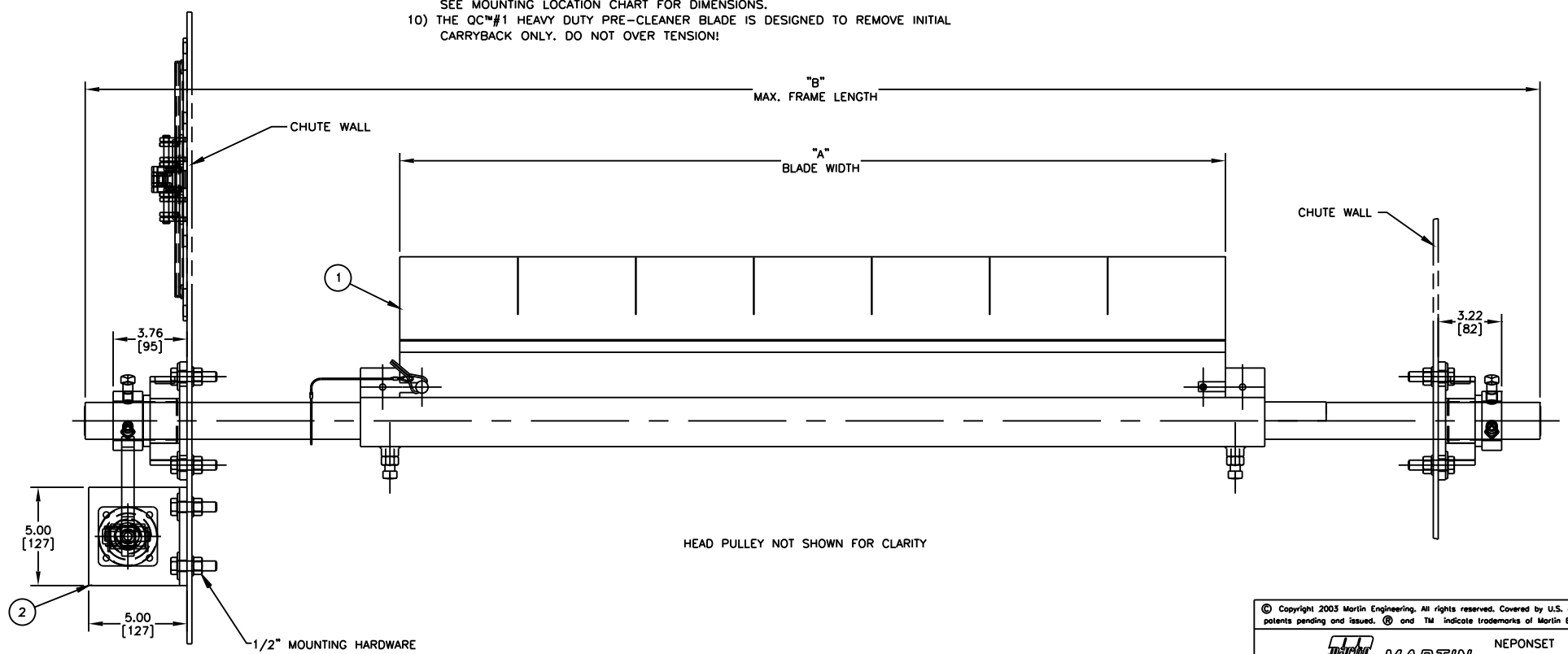
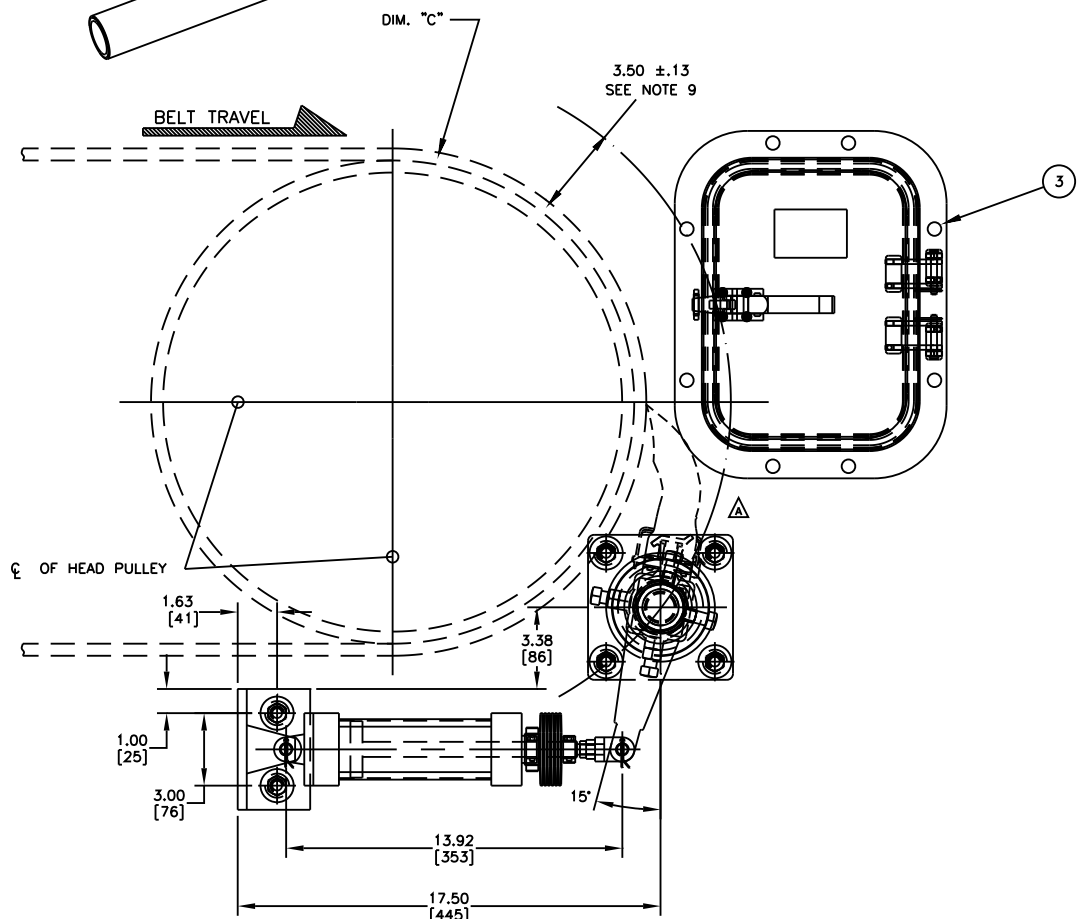
DOOR CUTOUT DETAIL
FOR STEEL ACCESS DOOR



CYLINDER EXTENDED TO BLADE WEARLINE



ISOMETRIC VIEW



HEAD PULLEY NOT SHOWN FOR CLARITY

- NOTES:
- 1) ALL DIMENSIONS ARE GIVEN IN INCHES (MM) AND ARE FOR REFERENCE ONLY.
 - 2) FRAME IS ADJUSTABLE TO DESIRED LENGTH.
 - 3) FIRST XX INDICATES BELT WIDTH, THIRD X INDICATES BLADE WITHOUT SLITS, FOURTH X INDICATES BLADE WITHOUT SEGMENTS. NEXT TWO XX'S INDICATE BLADE COVERAGE, THE REMAINING X'S INDICATE BLADE COLOR.
EXAMPLE: 36898-360030 = 36" BELT/30" BLADE WITH SLITS AND SEGMENTS.
36898-361034 = 36" BELT/34" BLADE W/O SLITS WITH SEGMENTS.
36898-360130 = 36" BELT/30" BLADE WITH SLITS W/O SEGMENTS.
36898-361134 = 36" BELT/34" BLADE W/O SLITS OR SEGMENTS.
 - 4) BLADE COVERAGE WILL BE 2.00 (51) OR 6.00 (152) LESS THAN BELT WIDTH TO ALLOW FOR POSSIBLE MISTRACKING OF BELT OR DAMAGED EDGES OF BELT.
 - 5) FOR BELT WIDTHS 54.00 (1372) AND OVER, MARTIN ENGINEERING RECOMMENDS USING A DUAL AIR CYLINDER TENSIONER ASM (P/N 37843-D).
 - 6) WHERE EXTREME OR UNUSUAL CONDITIONS EXIST, OR SPECIAL MAINFRAME LENGTHS ARE REQUIRED, CONSULT MARTIN ENGINEERING FOR ASSISTANCE.
 - 7) AIR CYLINDER TENSIONER ASSEMBLY MAY BE BOLTED OR WELDED IN PLACE. MARTIN ENGINEERING RECOMMENDS BOLTING WHEN APPLICABLE FOR EASIER MAINTENANCE AND ACCESSIBILITY.
 - 8) REFER TO OPERATOR'S MANUAL (M3618) FOR INSTALLATION INSTRUCTIONS.
 - 9) CLEANER MUST BE LOCATED SO THAT BLADE TIP IS AT OR SLIGHTLY BELOW HORIZONTAL CENTERLINE OF HEAD PULLEY. CLEANER IS SHOWN BELOW IN RECOMMENDED WORKING POSITION. SEE MOUNTING LOCATION CHART FOR DIMENSIONS.
 - 10) THE QC#1 HEAVY DUTY PRE-CLEANER BLADE IS DESIGNED TO REMOVE INITIAL CARRYBACK ONLY. DO NOT OVER TENSION!

NO.	DESCRIPTION	ECN	DATE	BY
D	CHGD P/N FROM SP09434-S TO 37843-S IN THE BOM	12887	07/20/10	MJB
C	CHG P/N FROM 34955-0912 TO CYA-0912/CHG DIM FROM 7.00 TO 7.50, 4 X R1.81 TO 4 X R2.00, .75 TO 1.00, 2.81 TO 2.56, 5.94 TO 5.69, 8.76 TO 8.25, 11.88 TO 11.38, 2.82 TO 2.56, 9.07 TO 8.82 & 12.63 TO 12.38/RAND MOUNTING CHART	12561	10/26/09	MJB
B	CHGD 4.63 TO 4.00 IN CHUTE CUTOUT DETAIL	----	03/13/07	JAP
A	CHGD TO NEW BLADE PROFILE / CHGD DIM "D" FROM 4.50 TO 4.00 & FROM 4.00 TO 3.50	11709	07/31/06	RND

© Copyright 2003 Martin Engineering. All rights reserved. Covered by U.S. and foreign patents pending and issued. ® and TM indicate trademarks of Martin Engineering.

MARTIN ENGINEERING
NEPONSET ILLINOIS USA

TITLE: QC#1 HEAVY DUTY W/AIR CYLINDER TENS & 9 X 12 ACCESS DOOR

SALES DRAWING: S50010

DRAWN RND: 08/11/03
CHECKED: 08/12/03
APPROVED: 08/12/03
SCALE: 1/4