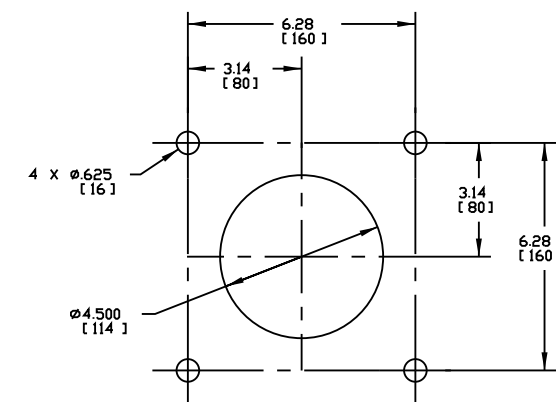
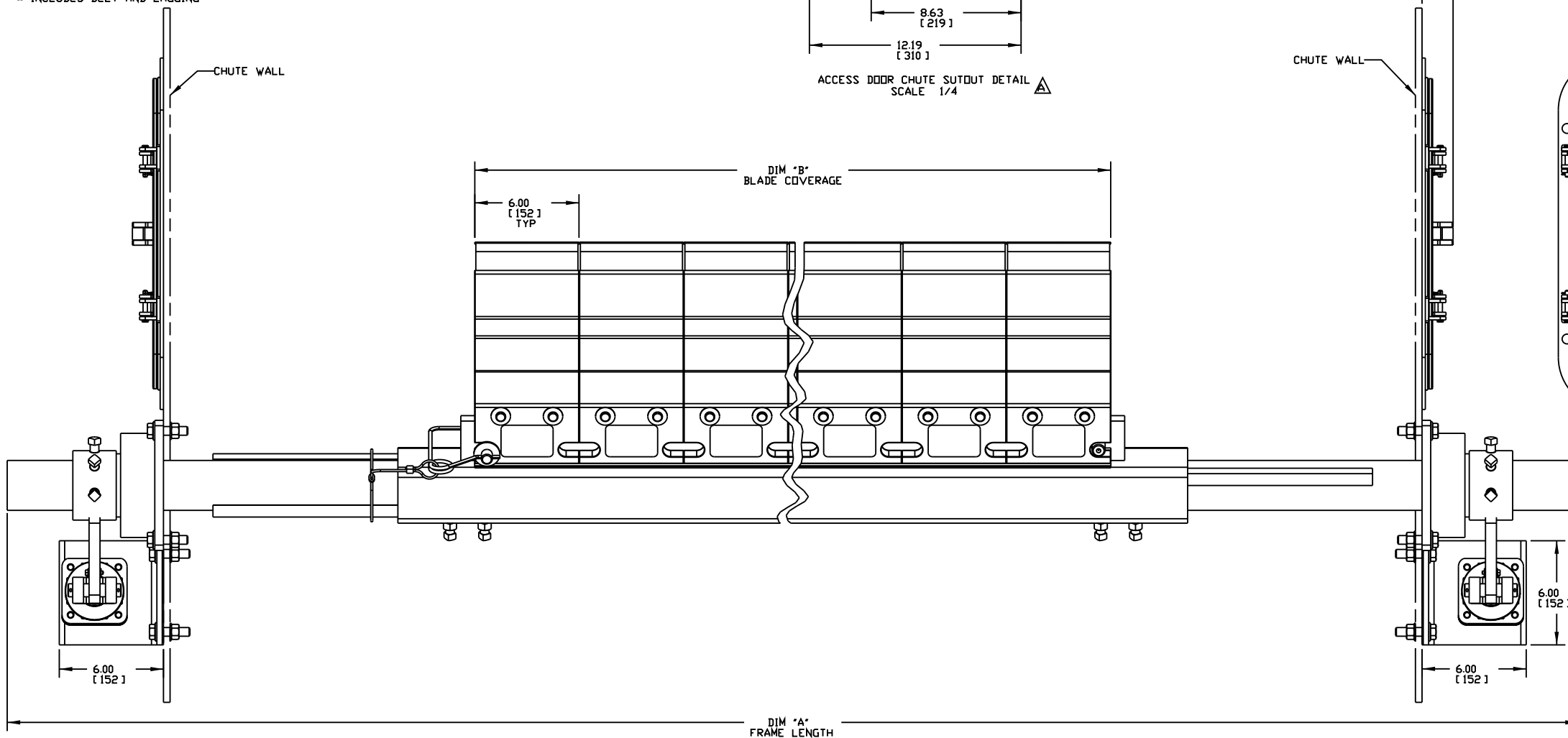


PART NO.	BELT WIDTH	DIM "A" FRAME LENGTH	DIM "B" BLADE COVERAGE	QTY BLADES	AIR PRESSURE PSI [kPa]
QCIX-48MX42XXXX	48.00 [1200-1400]	96.00 [2438]	42.14 [1070]	7	31 [214]
QCIX-54MX42XXXX	48.00 [1200-1400]	102.00 [2591]	42.14 [1070]	7	31 [214]
QCIX-54MX48XXXX	54.00 [1400-1600]	102.00 [2591]	48.16 [1223]	8	31 [214]
QCIX-60MX48XXXX	54.00 [1400-1600]	108.00 [2743]	48.16 [1223]	8	31 [214]
QCIX-60MX54XXXX	60.00 [1600-1800]	108.00 [2743]	54.18 [1376]	9	40 [276]
QCIX-66MX54XXXX	60.00 [1600-1800]	114.00 [2896]	54.18 [1376]	9	40 [276]
QCIX-66MX60XXXX	66.00 [1600-1800]	114.00 [2896]	60.20 [1529]	10	40 [276]
QCIX-72MX60XXXX	66.00 [1600-1800]	120.00 [3048]	60.20 [1529]	10	40 [276]
QCIX-72MX66XXXX	72.00 [1800-2000]	120.00 [3048]	66.22 [1682]	11	45 [310]

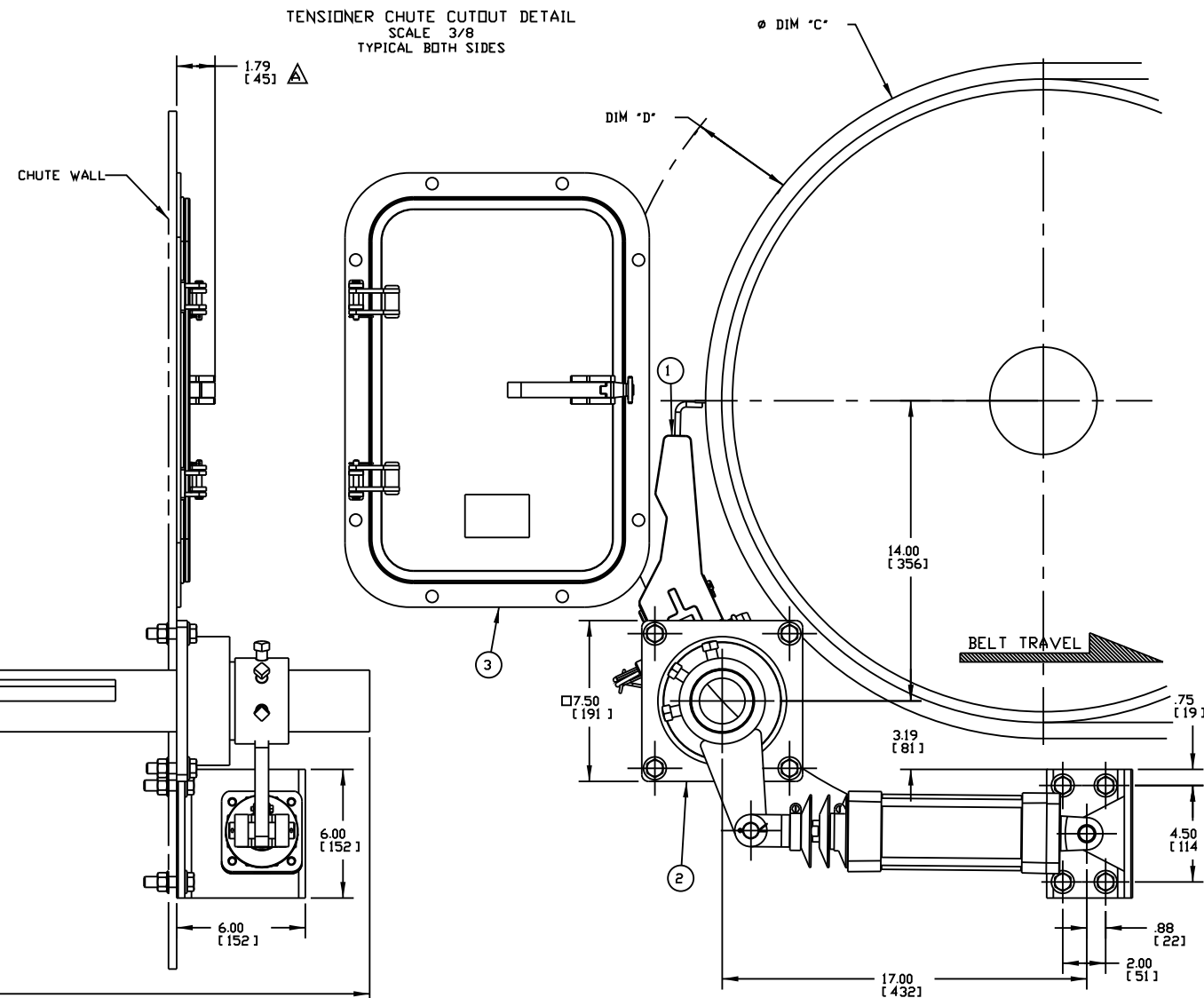
ASSEMBLY PART NO.	COLOR
QCIX-XXMXXDRXX	ORANGE

MOUNTING LOCATION CHART	
DIM "C" HEAD PULLEY DIAMETER *	DIM "D"
14 [356]	8.25 [210]
16 [406]	7.50 [191]
18 [457]	7.00 [178]
20 [508]	6.50 [165]
22 [559]	6.25 [159]
24 [610]	5.75 [146]
26 [660]	5.50 [140]
28 [711]	5.00 [127]
30 [762]	4.75 [121]
36 [914]	4.00 [102]
42 [1067]	3.50 [89]

\* INCLUDES BELT AND LAGGING



TENSIONER CHUTE CUTOFF DETAIL  
SCALE 3/8  
TYPICAL BOTH SIDES



NOTES:

- ALL DIMENSIONS ARE GIVEN IN INCHES (MM).
- ALL DIMENSIONS ARE FOR REFERENCE ONLY.
- FOR EASY ACCESSIBILITY AND MAINTENANCE, MARTIN ENGINEERING RECOMMENDS BOLTING CLEANER TO EXISTING STRUCTURE WHEN APPLICABLE.
- CLEANER IS SHOWN IN RECOMMENDED WORKING POSITION.
- WHERE EXTREME OR UNUSUAL CONDITIONS EXIST, OR SPECIAL MAINFRAME LENGTHS ARE REQUIRED CONTACT MARTIN ENGINEERING.
- REFER TO OPERATOR'S MANUALS M3722, & M3512 FOR COMPLETE INSTALLATION INSTRUCTIONS.
- FOR BELT WIDTHS 42.00 [1000-1200] AND SMALLER, MARTIN ENGINEERING RECOMMENDS USING A SINGLE XHD AIR TENSIONER.
- THE XHD QC #1 MT PRE-CLEANER BLADES ARE DESIGNED TO REMOVE HEAVY CARRYBACK ONLY. DO NOT OVERTENSION.
- REFER TO CHART FOR AIR PRESSURE REQUIREMENTS FOR THE XHD AIR TENSIONER.
- BLADE COVERAGE IS LESS THAN BELT WIDTH, DUE TO POSSIBLE MISTRACKING OR DAMAGED EDGES OF THE BELT.

- 1) IN THE ASSEMBLY P/N THE QCIX INDICATES A QUICK CHANGE PRIMARY BLADE ASM.  
THE FIRST TWO XX'S INDICATE BELT WIDTH.  
THE "M" INDICATES METAL TIPPED BLADE  
THE NEXT X INDICATES BLADE TYPE:  
0 = NO BLADES  
T = TUNGSTEN CARBIDE TIPPED BLADE  
C = CORROSION RESISTANT TC TIPPED BLADE  
THE NEXT TWO XX INDICATE BLADE COVERAGE.  
00 = NO BLADES  
THE NEXT TWO XX'S INDICATE BLADE COLOR:  
OR = ORANGE  
THE NEXT X INDICATES MAINFRAME TYPE:  
P = STANDARD DUTY  
S = 316 STAINLESS STEEL  
THE LAST X INDICATES ACCESSORY OPTIONS:  
0 = NO OPTIONS  
S = SPRING TENSIONER

ITEM	QTY.	DESCRIPTION	PART NUMBER
1	1	XHD QC#1 MT ASSEMBLY	QCIX-XXMXXXXXX
2	1	XHD DUAL AIR CYL TENS ASM	32135-2R
3	2	LOW PROFILE CYA DOOR	CYA-1218XXXX

Copyright 2010 Martin Engineering. All rights reserved. Covered by US and Foreign patents pending and issued. R and TM indicate trademarks of Martin Engineering.

**MARTIN ENGINEERING** NEPONSET ILLINOIS USA

TITLE	DATE	RND
XHD QC#1 MT CLEANER W/XHD AIR TENSIONER & 12X18 ACCESS DOOR	05/21/07	CHECKED
		ENG. MJB
	05/25/07	DATE
	05/25/07	APPROVED DM
		SCALE 1/4

NO.	DESCRIPTION	ECN	DATE	BY
A	CHGD P/N FROM QCIX-XXXXXXX TO QCIX-XXXXXXX & 34995-1218XX TO CYA-1218XX IN THE QDM/CHGD DIM FROM 2.78 TO 1.75/UPDATED ACCESS DOOR DIMS	12824	04/05/10	MJB

SALES DRAWING M00715 S50032-DA