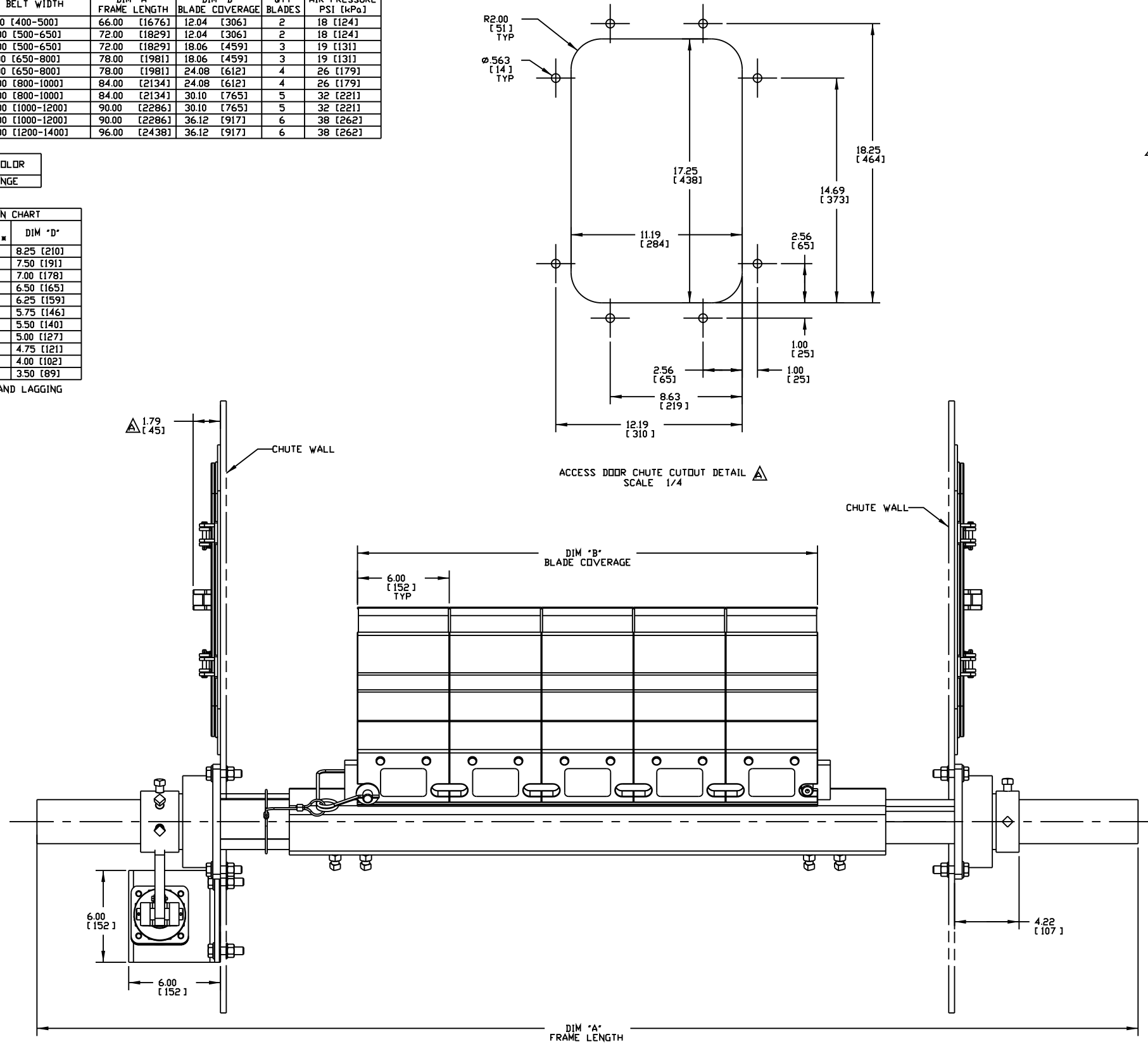


PART NO.	BELT WIDTH	DIM "A" FRAME LENGTH	DIM "B" BLADE COVERAGE	QTY BLADES	AIR PRESSURE PSI [kPa]
QCIX-18MX12XXXX	18.00 [400-500]	66.00 [1676]	12.04 [306]	2	18 [124]
QCIX-24MX12XXXX	24.00 [500-650]	72.00 [1829]	12.04 [306]	2	18 [124]
QCIX-24MX18XXXX	24.00 [500-650]	72.00 [1829]	18.06 [459]	3	19 [131]
QCIX-30MX18XXXX	30.00 [650-800]	78.00 [1981]	18.06 [459]	3	19 [131]
QCIX-30MX24XXXX	30.00 [650-800]	78.00 [1981]	24.08 [612]	4	26 [179]
QCIX-36MX24XXXX	36.00 [800-1000]	84.00 [2134]	24.08 [612]	4	26 [179]
QCIX-36MX30XXXX	36.00 [800-1000]	84.00 [2134]	30.10 [765]	5	32 [221]
QCIX-42MX30XXXX	42.00 [1000-1200]	90.00 [2286]	30.10 [765]	5	32 [221]
QCIX-42MX36XXXX	42.00 [1000-1200]	90.00 [2286]	36.12 [917]	6	38 [262]
QCIX-48MX36XXXX	48.00 [1200-1400]	96.00 [2438]	36.12 [917]	6	38 [262]

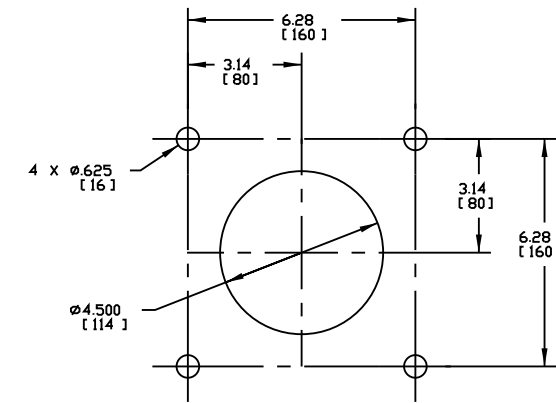
ASSEMBLY PART NO.	COLOR
QCIX-XXMXXDRXX	ORANGE

MOUNTING LOCATION CHART	
DIM "C" HEAD PULLEY DIAMETER *	DIM "D"
14 [356]	8.25 [210]
16 [406]	7.50 [191]
18 [457]	7.00 [178]
20 [508]	6.50 [165]
22 [559]	6.25 [159]
24 [610]	5.75 [146]
26 [660]	5.50 [140]
28 [711]	5.00 [127]
30 [762]	4.75 [121]
36 [914]	4.00 [102]
42 [1067]	3.50 [89]

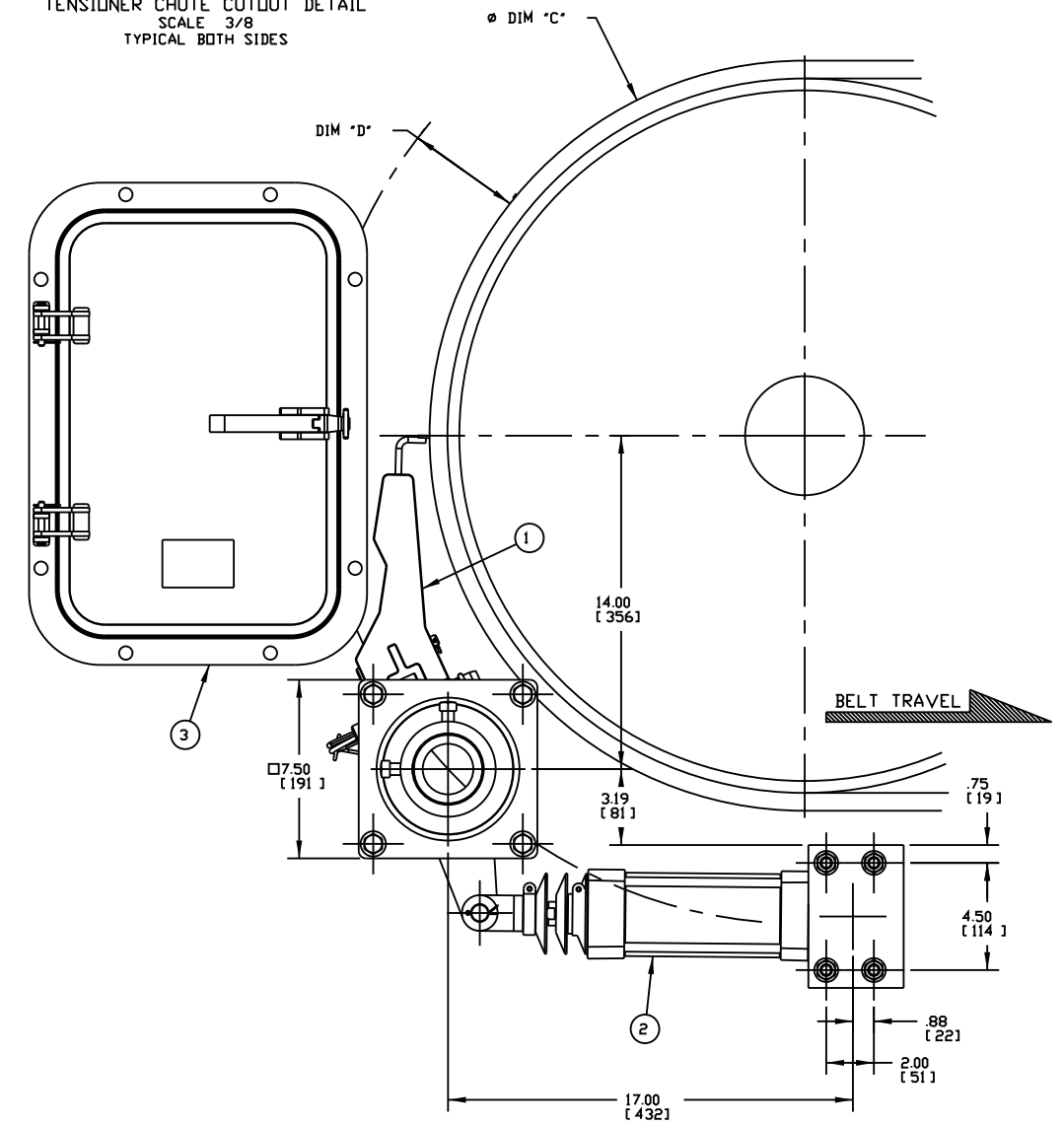
* INCLUDES BELT AND LAGGING



ACCESS DOOR CHUTE CUTOUT DETAIL
SCALE 1/4



TENSIONER CHUTE CUTOUT DETAIL
SCALE 3/8
TYPICAL BOTH SIDES



- NOTES:
- 1) ALL DIMENSIONS ARE GIVEN IN INCHES [MM].
 - 2) ALL DIMENSIONS ARE FOR REFERENCE ONLY.
 - 3) FOR EASY ACCESSIBILITY AND MAINTENANCE, MARTIN ENGINEERING RECOMMENDS BOLTING CLEANER TO EXISTING STRUCTURE WHEN APPLICABLE.
 - 4) CLEANER IS SHOWN IN RECOMMENDED WORKING POSITION.
 - 5) WHERE EXTREME OR UNUSUAL CONDITIONS EXIST, OR SPECIAL MAINFRAME LENGTHS ARE REQUIRED CONTACT MARTIN ENGINEERING.
 - 6) REFER TO OPERATOR'S MANUALS M3722, & M3512 FOR COMPLETE INSTALLATION INSTRUCTIONS.
 - 7) FOR BELT WIDTHS 48.00 [1200-1400] AND LARGER, MARTIN ENGINEERING RECOMMENDS USING A DUAL XHD AIR TENSIONER.
 - 8) THE XHD QC #1 MT PRE-CLEANER BLADES ARE DESIGNED TO REMOVE HEAVY CARRYBACK ONLY. DO NOT OVERTENSION.
 - 9) REFER TO CHART FOR AIR PRESSURE REQUIREMENTS FOR THE XHD AIR TENSIONER.
 - 10) BLADE COVERAGE IS LESS THAN BELT WIDTH, DUE TO POSSIBLE MISTRACKING OR DAMAGED EDGES OF THE BELT.

- 11) IN THE ASSEMBLY P/N THE QCIX INDICATES A QUICK CHANGE PRIMARY BLADE ASM. THE FIRST TWO XX'S INDICATE BELT WIDTH. THE 'M' INDICATES METAL TIPPED BLADE. THE NEXT X INDICATES BLADE TYPE:
- 0 = NO BLADES
 - T = TUNGSTEN CARBIDE TIPPED BLADE
 - C = CORROSION RESISTANT TC TIPPED BLADE
- THE NEXT TWO XX INDICATE BLADE COVERAGE.
- 00 = NO BLADES
 - OR = ORANGE
- THE NEXT X INDICATES MAINFRAME TYPE:
- P = STANDARD DUTY
 - S = 316 STAINLESS STEEL
- THE LAST X INDICATES ACCESSORY OPTIONS:
- 0 = NO OPTIONS
 - S = SPRING TENSIONER

ITEM	QTY.	DESCRIPTION	PART NUMBER
1	1	XHD QC#1 MT ASSEMBLY	QCIX-XXMXXXXXX
2	1	XHD SINGLE AIR CYL TENS ASM	32135
3	2	LOW PROFILE CYA DOOR	CYA-1218XXXX

<p>Copyright 2010 Martin Engineering. All rights reserved. Covered by US and Foreign patents pending and issued. R and TM indicate trademarks of Martin Engineering.</p> <p>MARTIN ENGINEERING NEPONSET ILLINOIS USA</p>			
<p>TITLE: XHD QC #1 MT CLEANER W/XHD AIR TENSIONER & 12X18 ACCESS DOOR</p>		<p>NO. A</p>	<p>DATE 05/21/07</p>
<p>DESCRIPTION: CHGD P/N FROM QCIX-XXXXXXX TO QCIX-XXMXXXXXX & 34995-1218XX TO CYA-1218XX IN THE 12M/CHGD DIM FROM 2.79 TO 1.79/UPDATED ACCESS DOOR DIMS.</p>		<p>ECN 12824</p>	<p>DATE 04/05/10</p>
<p>REVISION</p>		<p>BY MJB</p>	<p>CHECKED</p>
<p>SALES DRAWING</p>		<p>APPROVED DM</p>	<p>DATE 05/25/07</p>
<p>M00715</p>		<p>S50032-SA</p>	<p>SCALE 1/4</p>