

BELT WIDTH	XHD DC#1 ASM PART NUMBER	DR2000 ASM PART NUMBER	HED4000 ASM PART NUMBER	XHD DC#1 MAX FRAME LG	XHD DC#1 BLD COVERAGE	XHD DC#1 TENS P/N	DR2000 MAX FRAME LG	DR2000 BLD COVERAGE	HED4000 MAX FRAME LG	HED4000 BLD COVERAGE
30.00 (650-800)	35899-30x24xxx	DR2000-30x-xxx	HED4000-30-xxxx	78.00 (1981)	24.00 (610)	38003	81.00 (2057)	24.00 (610)	84.00 (2134)	28.00 (711)
36.00 (800-1000)	35899-36x30xxx	DR2000-36x-xxx	HED4000-36-xxxx	84.00 (2134)	30.00 (762)	38003	87.00 (2210)	30.00 (762)	84.00 (2134)	34.00 (864)
42.00 (1000-1200)	35899-42x36xxx	DR2000-42x-xxx	HED4000-42-xxxx	90.00 (2286)	36.00 (914)	38003	93.00 (2362)	36.00 (914)	90.00 (2286)	40.00 (1016)
48.00 (1200-1400)	35899-48x42xxx	DR2000-48x-xxx	HED4000-48-xxxx	96.00 (2438)	42.00 (1067)	38003-2	99.00 (2551)	42.00 (1067)	96.00 (2438)	46.00 (1168)
54.00 (1400-1600)	35899-54x48xxx	DR2000-54x-xxx	HED4000-54-xxxx	102.00 (2591)	48.00 (1219)	38003-2	105.00 (2667)	48.00 (1219)	102.00 (2591)	52.00 (1321)
60.00 (1600-1800)	35899-60x54xxx	DR2000-60x-xxx	HED4000-60-xxxx	108.00 (2743)	54.00 (1372)	38003-2	111.00 (2819)	54.00 (1372)	108.00 (2743)	58.00 (1473)

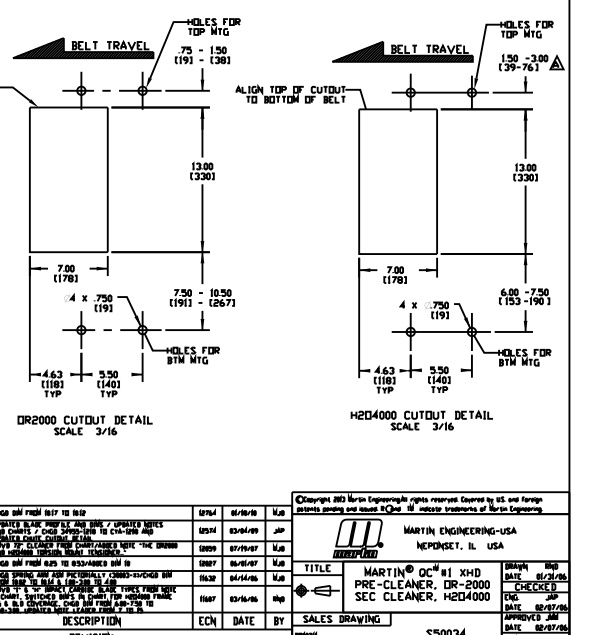
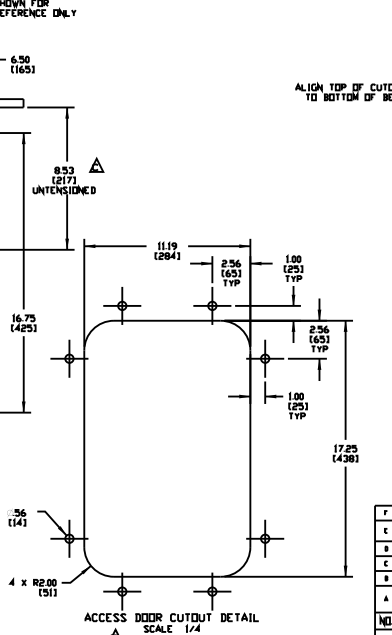
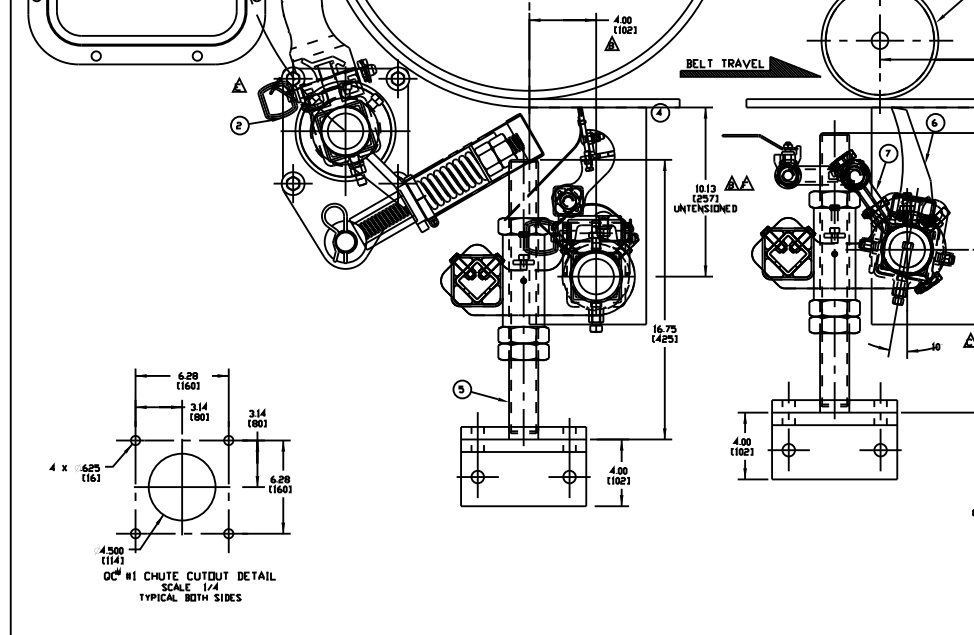
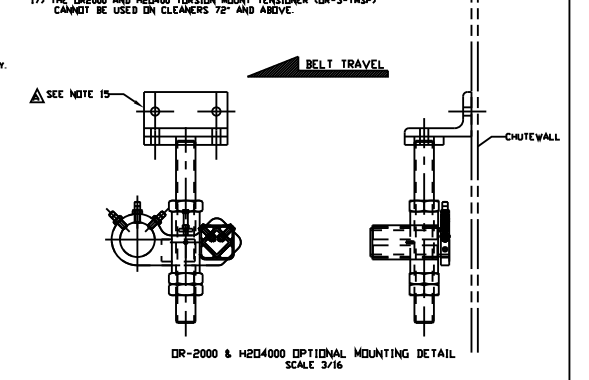
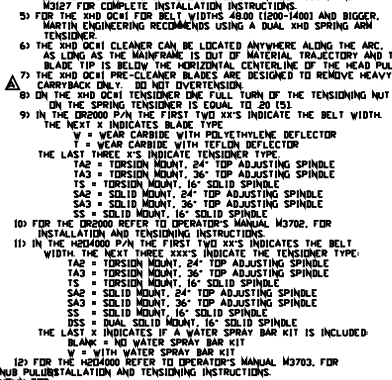
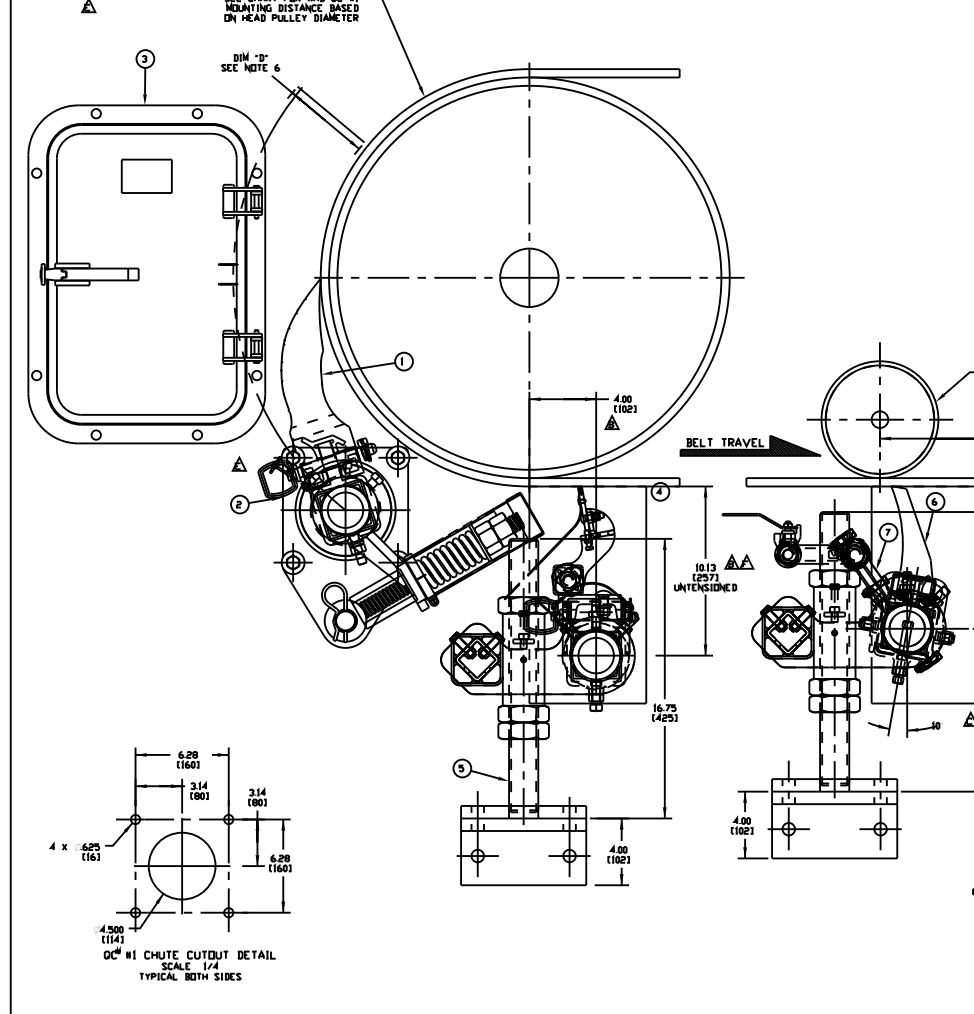
DC#1 MOUNTING LOCATION CHART	DR2000 BLADE CHART
HEAD PULLEY DIAMETER = DIM "D"	PART NO. BLADE DEFLECTOR MATERIAL CARBIDE TYPE
16 (400)	DR2000-XW-XXX DR-TC-P POLYETHYLENE WEAR
20 (500)	DR2000-XT-XXX DR-TC-T-P TITELON WEAR
24 (600)	
28 (700)	
30-126 (750-2000)	

ITEM	QTY.	DESCRIPTION	PART NUMBER
1	1	MARTIN DC#1 SHD ASSEMBLY	SEE CHART
2	1	MARTIN DC#1 SPRING TENSOR	SEE CHART
3	1	MARTIN WLDW PROFILE ACCESS DOOR	CYA-IP18
4	1	MARTIN WDR-2000 SECONDARY CLEANER	SEE CHART
5	2	TORSION MOUNT SOLID SPINDLE TENS	DR-3-TMSP
6	1	MARTIN HED4000 TERTIARY CLEANER	SEE CHART
7	1	WATER SPRAY BAR KIT	34897-XXXXH

DC#1 BLADE COLORS	
ASSEMBLY PART NO. COLOR	
35899-XXXXXX	ORANGE
35899-XXXXXX	BROWN
35899-XXXXXX	TAN
35899-XXXXXX	GREEN
35899-XXXXXX	NAVY BLUE
35899-XXXXXX	YELLOW

- NOTES:**
- ALL DIMENSIONS ARE GIVEN IN INCHES (MM).
  - ALL DIMENSIONS ARE FOR REFERENCE ONLY.
  - IN THE XHD DC#1 P/N THE FIRST TWO XX'S OF THE CLEANER PART NUMBER INDICATE THE BELT WIDTH. THE THIRD X INDICATES SOLID (S) OR SLIT (L). THE FOURTH X INDICATES SOLID (S) OR SEGMENTED (D). THE NEXT TWO XX'S INDICATE BLADE WIDTH. THE NEXT TWO XX'S INDICATE BLADE COLOR/MATERIAL. THE LAST X INDICATES IF A TENSOR (T) IS INCLUDED.
  - FOR THE XHD DC#1 REFER TO OPERATOR'S MANUAL M3504, AND VISIT FOR COMPLETE INSTALLATION INSTRUCTIONS.
  - FOR THE XHD DC#1 FOR BELT WIDTHS 4800 (1200-1400) AND BIGGER, MARTIN ENGINEERING RECOMMENDS USING A DUAL XHD SPRING ARM TENSOR.
  - THE XHD DC#1 CLEANER CAN BE LOCATED ANYWHERE ALONG THE ARC, AS LONG AS THE MAINFRAME IS OUT OF MATERIAL TRAJECTORY AND THE BLADE TIP IS BELOW THE HORIZONTAL CENTERLINE OF THE HEAD PULLEY.
  - THE XHD DC#1 PRE-CLEANER BLADES ARE DESIGNED TO REMOVE HEAVY CARRYBACK ONLY. DO NOT INVERT/REVERSE.
  - ON THE XHD DC#1 TENSOR ONE FULL TURN OF THE TENSORING NUT ON THE SPRING TENSOR IS EQUAL TO 20 (5) IN THE DR2000 P/N THE FIRST TWO XX'S INDICATE THE BELT WIDTH. THE NEXT X INDICATES BLADE TYPE. THE LAST THREE XX'S INDICATE TENSOR TYPE. TAG = TORSION MOUNT, 24" TOP ADJUSTING SPINDLE. TAD = TORSION MOUNT, 36" TOP ADJUSTING SPINDLE. TS = TORSION MOUNT, 16" SOLID SPINDLE. SAS = SOLID MOUNT, 24" TOP ADJUSTING SPINDLE. SAS = SOLID MOUNT, 36" TOP ADJUSTING SPINDLE. SS = SOLID MOUNT, 16" SOLID SPINDLE.
  - FOR THE DR2000 REFER TO OPERATOR'S MANUAL M3702, FOR INSTALLATION AND TENSORING INSTRUCTIONS.
  - IN THE HED4000 P/N THE FIRST TWO XX'S INDICATE THE BELT WIDTH. THE NEXT THREE XX'S INDICATE THE TENSOR TYPE. TAG = TORSION MOUNT, 24" TOP ADJUSTING SPINDLE. TAD = TORSION MOUNT, 36" TOP ADJUSTING SPINDLE. TS = TORSION MOUNT, 16" SOLID SPINDLE. SAS = SOLID MOUNT, 24" TOP ADJUSTING SPINDLE. SAS = SOLID MOUNT, 36" TOP ADJUSTING SPINDLE. SS = SOLID MOUNT, 16" SOLID SPINDLE. DSS = DUAL SOLID MOUNT, 16" SOLID SPINDLE. THE LAST X INDICATES IF A WATER SPRAY BAR KIT IS INCLUDED. W = WITH WATER SPRAY BAR KIT. W = NO WATER SPRAY BAR KIT.
  - FOR THE HED4000 REFER TO OPERATOR'S MANUAL M3702, FOR INSTALLATION AND TENSORING INSTRUCTIONS.

- NOTES:**
- WHERE EXTREME OR UNUSUAL CONDITIONS EXIST, OR SPECIAL MAINFRAME LENGTHS ARE REQUIRED, CONTACT MARTIN.
  - TENSORING ASSEMBLY MAY BE BOLTED OR WELDED IN PLACE. MARTIN ENGINEERING RECOMMENDS BOLTING WHEN APPLICABLE FOR EASIER MAINTENANCE AND ACCESSIBILITY.
  - IN THE DR2000 AND HED4000 THE TENSORING CAN BE MOUNTED TO EXISTING STRUCTURE WITHOUT USING THE ANGLE MOUNTING BRACKET.
  - THE DR2000 AND HED4000 CLEANERS ARE SHOWN UNTENSORED.
  - THE DR2000 AND HED4000 TORSION MOUNT TENSOR (DR-3-TMSP) CANNOT BE USED ON CLEANERS 72" AND ABOVE.



NO.	REVISION	DESCRIPTION	ECH	DATE	BY
1		ISSUE FOR MFG			
2		ISSUE FOR MFG			
3		ISSUE FOR MFG			
4		ISSUE FOR MFG			
5		ISSUE FOR MFG			
6		ISSUE FOR MFG			
7		ISSUE FOR MFG			
8		ISSUE FOR MFG			
9		ISSUE FOR MFG			
10		ISSUE FOR MFG			

TITLE: MARTIN DC#1 XHD PRE-CLEANER, DR-2000 SEC. CLEANER, HED4000  
 DRAWN: JLP  
 DATE: 01/21/95  
 CHECKED: JLP  
 DATE: 01/21/95  
 APPROVED: JLP  
 DATE: 01/21/95  
 SCALE: 1/2