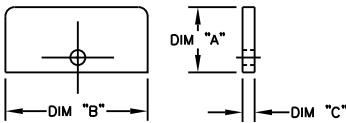


MAINFRAME ASM PART NUMBER	BELT WIDTH	FRAME LENGTH	BLADE COVERAGE	QUANTITY ITEM 4
21042-06X	6.00 [150-300]	47.00 [1194]	6.50 [165]	1
21042-12X	12.00 [300-400]	47.00 [1194]	10.50 [267]	2
21042-18X	18.00 [400-500]	54.00 [1372]	14.50 [368]	3
21042-24X	24.00 [500-600]	60.00 [1524]	18.50 [470]	4
21042-30X	30.00 [650-800]	68.00 [1727]	26.50 [673]	6
21042-36X	36.00 [800-1000]	68.00 [1527]	30.50 [775]	7
21042-42X	42.00 [1000-1200]	82.00 [2083]	38.50 [978]	9
21042-48X	48.00 [1200-1400]	82.00 [2083]	42.50 [1080]	10
21042-54X *	54.00 [1400-1600]	89.00 [2261]	50.50 [1283]	12
21042-60X *	60.00 [1600-1800]	96.00 [2438]	54.50 [1385]	13
21042-66X *	66.00 [1600-1800]	110.00 [2794]	62.50 [1588]	15
21042-72X *	72.00 [1800-2000]	110.00 [2794]	66.50 [1689]	16
21042-78X *	78.00 [1800-2000]	114.00 [2896]	74.50 [1892]	18
21042-84X *	84.00 [2000-2200]	120.00 [3048]	78.50 [1994]	19
21042-96X *	96.00 [2200-2400]	132.00 [3353]	90.50 [2299]	22

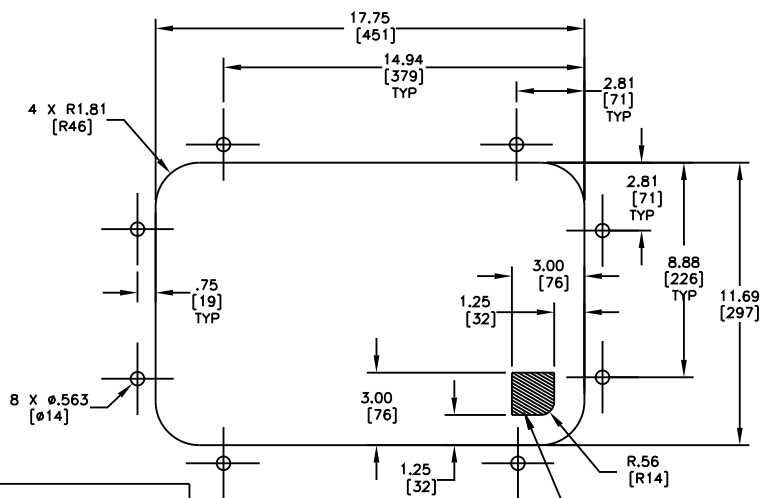
\* - SEE NOTE 2

ASSEMBLY PART NUMBER	SEE BLADE DETAIL			MATERIAL	ITEM 4 PART NO.
	DIM "A"	DIM "B"	DIM "C"		
21042-XXS	3.00 [76]	6.50 [165]	.19 [5]	STAINLESS STEEL	16960
21042-XXC	2.63 [67]	6.00 [152]	.72 [18]	CERAMIC *	17094
21042-XXT	3.00 [76]	6.50 [165]	.25 [6]	SINGLE EDGE TUNGSTEN CARBIDE	27924
21042-XXD	4.50 [114]	6.50 [165]	.25 [6]	DOUBLE EDGE TUNGSTEN CARBIDE	28020
21042-XXU	3.13 [80]	6.50 [165]	.72 [18]	URETHANE *	16943
21042-XXH	3.00 [76]	6.50 [165]	.25 [6]	HEAT TREATED	24259

\* INDICATES THE BLADES WITH STAINLESS STEEL HOLDERS

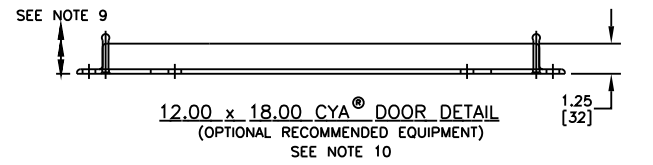


BLADE DETAIL  
SEE BLADE CHART

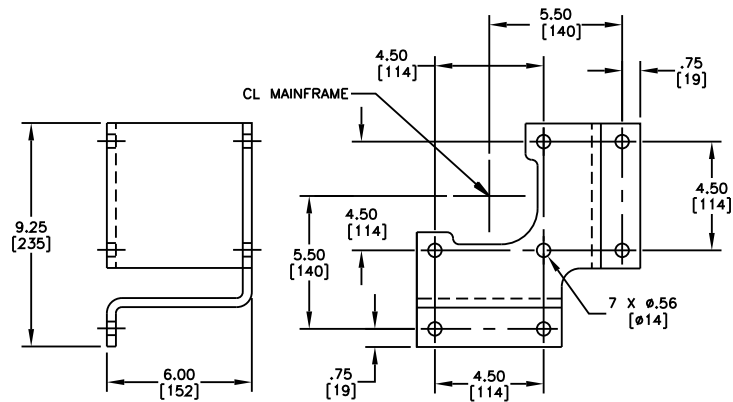


CHUTE CUTOUT DETAIL  
(OPERATORS SIDE)

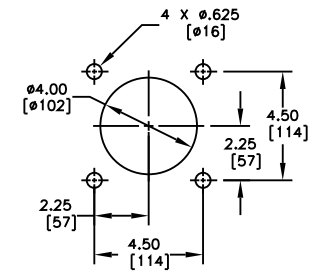
LOCATE MAINFRAME CENTER WITHIN THIS AREA WHEN USING FLANGE BRACKET TYP. 4 CORNERS



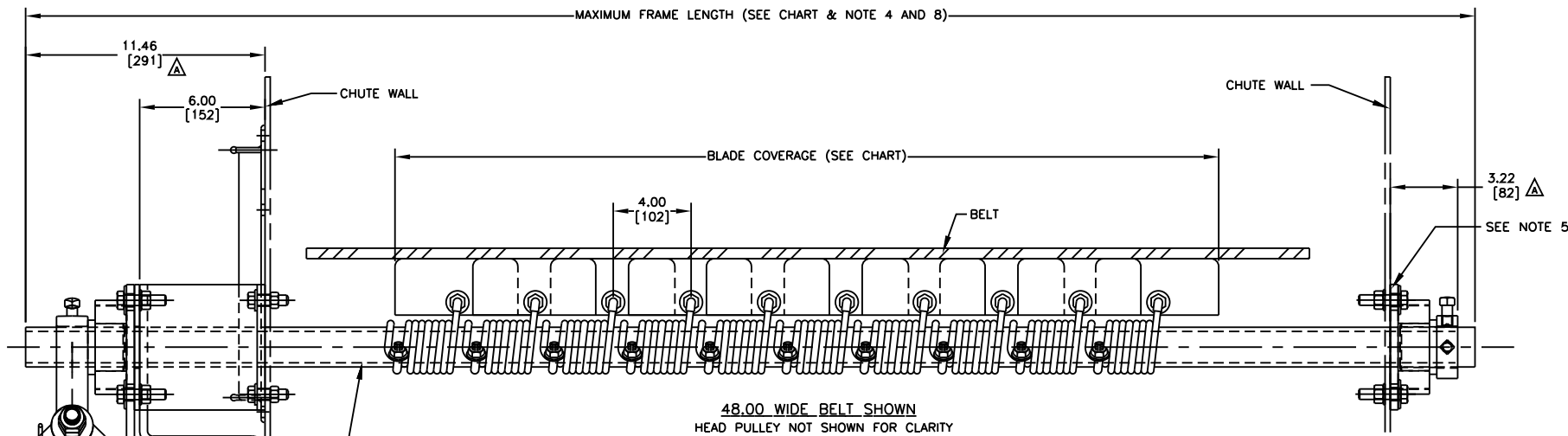
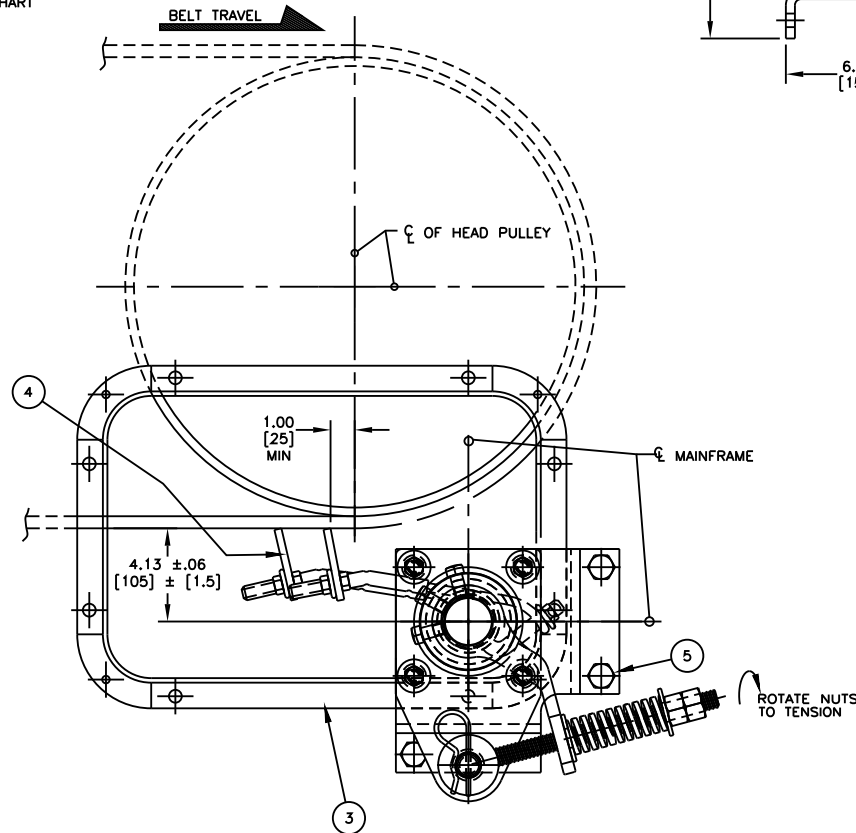
12.00 x 18.00 CYA DOOR DETAIL  
(OPTIONAL RECOMMENDED EQUIPMENT)  
SEE NOTE 10



FLANGE BRACKET DETAIL  
(OPTIONAL RECOMMENDED EQUIPMENT)



FARSIDE CHUTE CUTOUT DETAIL  
IF NO CYA DOOR IS USED



48.00 WIDE BELT SHOWN  
HEAD PULLEY NOT SHOWN FOR CLARITY

ITEM	QTY.	DESCRIPTION	PART NUMBER
1	1	PM BELT CLEANER MAINFRAME ASM	21042-XXX
2	1	SPRING TENSIONER	38180
3	1	12.00 X 18.00 CYA DOOR	27658-1218
4	SEE CHART	REPLACEMENT BLADE	SEE BLD CHART
5	1	FLANGE BRACKET	30537

- NOTES:
- 1) ALL DIMENSIONS ARE GIVEN IN INCHES (MM) AND ARE FOR REFERENCE ONLY.
  - 2) FOR BELT WIDTHS 54.00 (1400-1600) AND ABOVE, MARTIN ENGINEERING RECOMMENDS A DUAL SPRING TENSIONER (P/N: 38180-2).
  - 3) FIRST -XX INDICATES BELT WIDTH, LAST X INDICATES BLADE TYPE.
  - 4) WHERE EXTREME OR UNUSUAL CONDITIONS EXIST, OR SPECIAL MAINFRAME LENGTHS ARE REQUIRED, CONSULT MARTIN ENGINEERING FOR ASSISTANCE.
  - 5) FAR SIDE OF MAINFRAME MAY BE MOUNTED TO CHUTE WALL IF NO DOOR IS USED.
  - 6) TENSIONER MAY BE BOLTED OR WELDED IN PLACE. MARTIN ENGINEERING RECOMMENDS BOLTING WHEN APPLICABLE FOR EASIER MAINTENANCE AND ACCESSIBILITY.
  - 7) REFER TO OPERATOR'S MANUAL (P/N: M3296) FOR INSTALLATION DETAILS.
  - 8) FRAME IS LONGER THAN REQUIRED. CUT IN FIELD TO DESIRED LENGTH.
  - 9) WHEN USING A CYA DOOR, A MINIMUM OF 2.50 (64) IS REQUIRED FOR THE REMOVAL OF RUBBER DOOR.
  - 10) CYA DOOR CAN BE MOUNTED IN ANY ROTATED POSITION AS LONG AS BLADES/ARMS CAN BE REMOVED WITHOUT OBSTRUCTION.

© Copyright 2006 Martin Engineering. All rights reserved. Covered by U.S. and foreign patents pending and issued. ® and TM indicate trademarks of Martin Engineering.

**MARTIN ENGINEERING** NEPONSET ILLINOIS USA

TITLE	PM SECONDARY CLEANER ASSEMBLY WITH SPRING TENSIONER	DRAWN JAP DATE 05/15/06
NO.	REVISION	CHECKED
SALES DRAWING	MD0661	APPROVED DATE 05/15/06
SCALE	1/4=1	

NO.	DESCRIPTION	ECN	DATE	BY
B	REV'D P/N 21042-XXR FROM THE CHART	----	12/20/07	MJB
A	CHGD DIM FROM 11.98 TO 11.46 & 1.25 TO 3.22/CHGD P/N FROM 30691-SH TO 38180 IN BOM & NOTES	12123	11/06/07	MJB