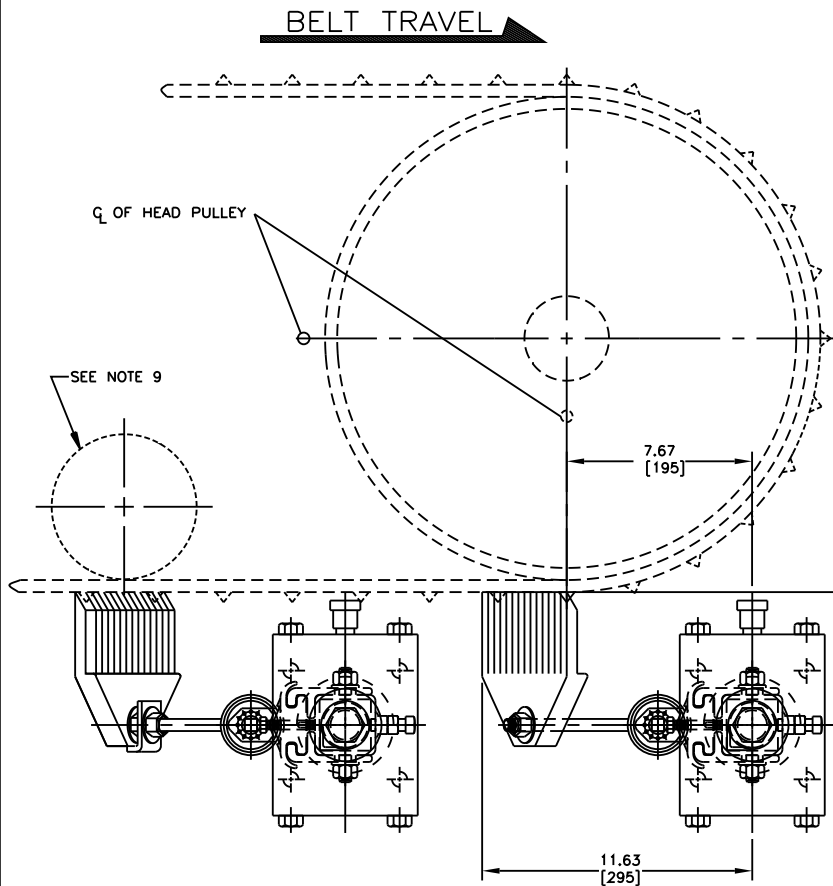
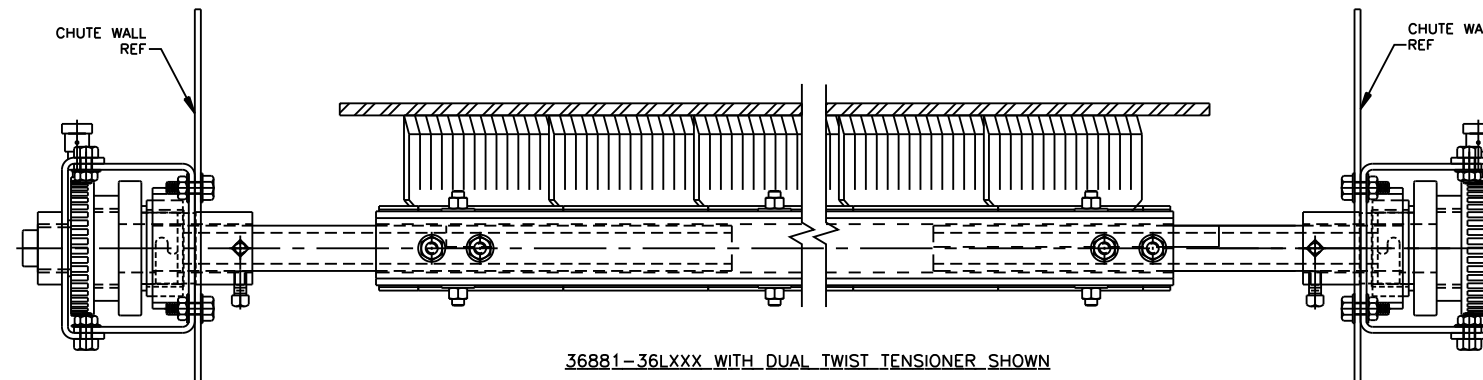
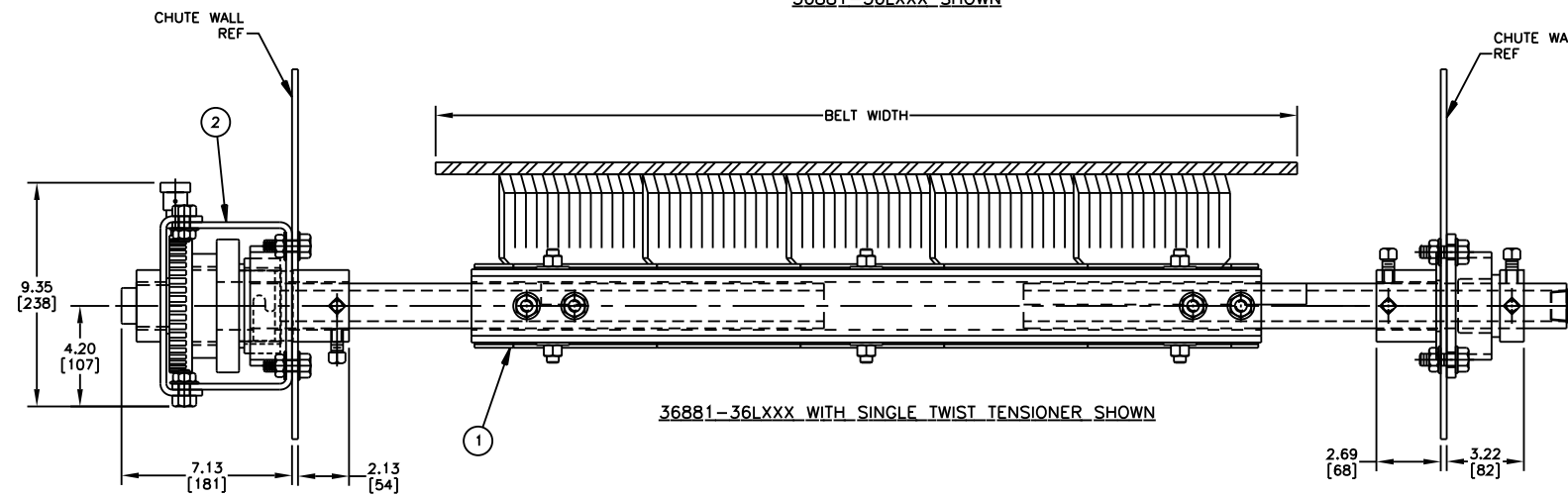
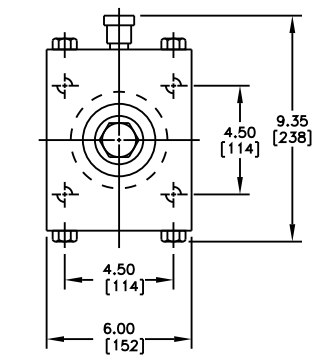
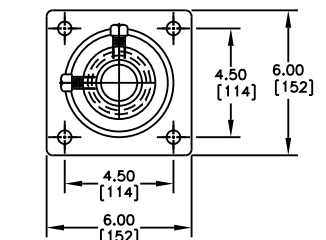
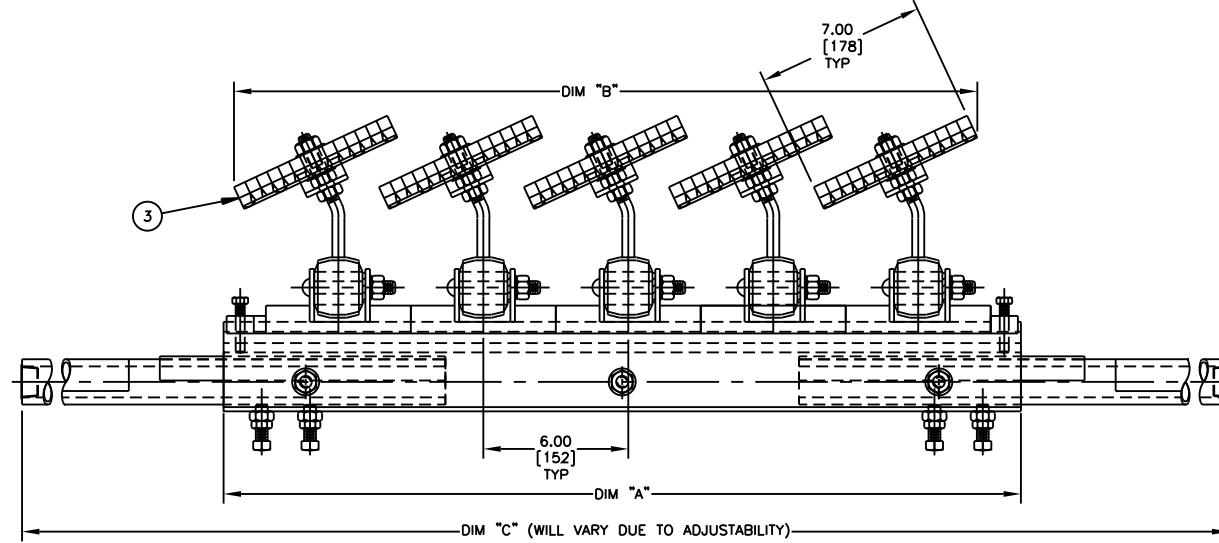
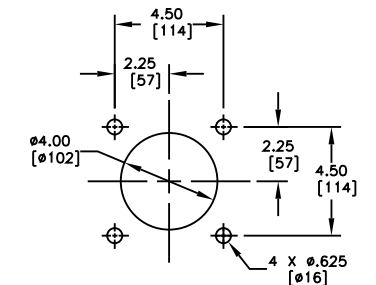
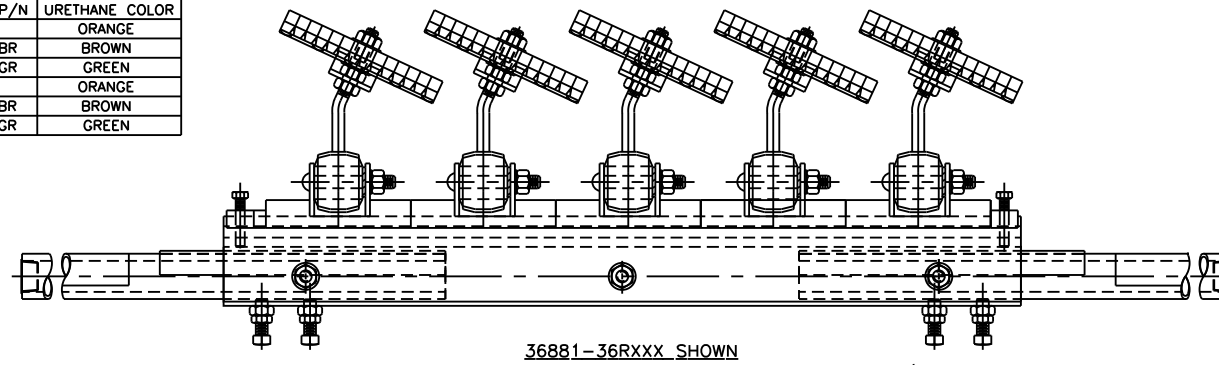


ASSEMBLY P/N	BELT WIDTH	DIM "A" SLEEVE LG	DIM "B" BLADE WIDTH	DIM "C" MAX FRAME LG	BLADE QTY	TENSIONER PART NO.
36881-18XXXX	18.00	[457]	12.50 [318]	43.00 [1092]	2	31443
36881-24XXXX	24.00	[610]	18.50 [470]	49.00 [1245]	3	31443
36881-30XXXX	30.00	[762]	27.00 [686]	61.00 [1549]	4	31443
36881-36XXXX	36.00	[914]	33.00 [838]	67.00 [1702]	5	31443
36881-42XXXX	42.00	[1067]	39.00 [991]	73.00 [1854]	6	31443
36881-48XXXX	48.00	[1219]	45.00 [1143]	79.00 [2007]	7	31443
36881-54XXXX	54.00	[1372]	51.00 [1295]	85.00 [2159]	8	31443-2R
36881-60XXXX	60.00	[1524]	57.00 [1448]	91.00 [2312]	9	31443-2R
36881-72XXXX	72.00	[1829]	69.00 [1753]	109.00 [2769]	11	31443-2R
36881-78XXXX	78.00	[1981]	75.00 [1905]	117.00 [2972]	12	31443-2R
36881-84XXXX	84.00	[2134]	81.00 [2057]	123.00 [3124]	13	31443-2R
36881-96XXXX	96.00	[2438]	93.00 [2362]	135.00 [3429]	15	31443-2R

BLADE CHART				
ASSEMBLY P/N	BLADE MATERIAL	CHEVRON BLADE P/N	TORSION ARM ASSEMBLY P/N	TORSION BASE URETHANE COLOR
36881-XXXX	URETHANE	32262	32270-XU	ORANGE
36881-XXXUBR	URETHANE	32262	32270-XUBR	BROWN
36881-XXXUGR	URETHANE	32262	32270-XUGR	GREEN
36881-XXXXR	RUBBER	32757	32270-XR	ORANGE
36881-XXXXRBR	RUBBER	32757	32270-XRBR	BROWN
36881-XXXXRGR	RUBBER	32757	32270-XRGR	GREEN

ITEM	QTY.	DESCRIPTION	PART NUMBER
1	1	CHEVRON BELT CLEANER	36881-XXXXXX
2	1	TWIST TENSIONER	SEE CHART
3	SEE CHART	CHEVRON BLADE	SEE BLADE CHART



- NOTES:
- 1) ALL DIMENSIONS ARE GIVEN IN INCHES [MM].
 - 2) ALL DIMENSIONS ARE FOR REFERENCE ONLY.
 - 3) THE FIRST XX INDICATES BELT WIDTH, THE THIRD X INDICATES LEFT OR RIGHT ARM WELDMENT AND THE FOURTH X INDICATES BLADE TYPE. THE LAST TWO XX INDICATE URETHANE TORSION BASE COLOR.
 - 4) THE CHEVRON BELT CLEANER SYSTEM IS RECOMMENDED ON CHEVRON RIBBED OR CLEATED BELTS.
 - 5) MARTIN ENGINEERING RECOMMENDS INSTALLING A LEFT AND A RIGHT CLEANER ASSEMBLIES FOR BEST CLEANING RESULTS.
 - 6) REFER TO OPERATOR'S MANUALS M3266 & M3296 FOR COMPLETE INSTALLATION INSTRUCTIONS.
 - 7) FOR BELT WIDTHS 48.00 [1372] AND UNDER, MARTIN ENGINEERING RECOMMENDS USING A SINGLE TWIST TENSIONER ASSEMBLY, P/N 31443, FOR BELTS 54.00 [1372] AND LARGER USE A DUAL TWIST TENSIONER ASSEMBLY, P/N 31443-2R.
 - 8) BLADE COVERAGE WITH BE 5.50 [140] LESS THAN BELT WIDTH DUE TO POSSIBLE MISTRACKING OR DAMAGED EDGES OF BELT.
 - 9) FOR BEST RESULTS, INSTALL A ROLLER FOR PROPER BELT SUPPORT IF CLEANER IS NOT INSTALLED ON HEAD PULLEY.

© Copyright 2008 Martin Engineering. All rights reserved. Covered by U.S. and foreign patents pending and issued. ® and TM indicate trademarks of Martin Engineering.

MARTIN ENGINEERING
NEPONSET ILLINOIS USA

TITLE	DURT TRACKER™ CHEVRON BELT CLEANER W/SPLIT ALUMINUM FRAME AND TWIST TENSIONER	DRAWN JAP	DATE 07/02/08
NO.	REVISION	ECN	DATE
SALES DRAWING	MO0759	S50058	SCALE 1/4=1

NO.	DESCRIPTION	ECN	DATE	BY
MO0759	REVISION			