

BELT WIDTH	STRINGER WIDTH	
	STD. BASE	WIDE BASE
36.00	48.00	54.00
42.00	54.00	60.00
48.00	60.00	66.00
54.00	66.00	72.00
60.00	72.00	78.00
72.00	84.00	90.00

STRINGERS		
PART NUMBER	MAT'L THICKNESS (IN.)	LENGTH (IN.)
UC-01101-P	0.50	120.00
UC-01102-P	0.375	120.00

BELT WIDTH	STRAIGHT BRACE				DIAGONAL BRACE			
	STD. BASE		WIDE BASE		STD. BASE		WIDE BASE	
	1/2" STRINGERS	3/8" STRINGERS	1/2" STRINGERS	3/8" STRINGERS	1/2" STRINGERS	3/8" STRINGERS	1/2" STRINGERS	3/8" STRINGERS
36.00	UC-001110-36	UC-001120-36	---	---	UC-001130-36	UC-001140-36	---	---
42.00	UC-001110-42	UC-001120-42	---	---	UC-001130-42	UC-001140-42	---	---
48.00	UC-001110-48	UC-001120-48	---	---	UC-001130-48	UC-001140-48	---	---
54.00	UC-001110-54	UC-001120-54	---	---	UC-001130-54	UC-001140-54	---	---
60.00	UC-001110-60	UC-001120-60	---	---	UC-001130-60	UC-001140-60	---	---
72.00	UC-001110-72	UC-001120-72	---	---	UC-001130-72	UC-001140-72	---	---

QUANTITY IS 2 PER 10 LIN. FT. OF STRINGER      QUANTITY IS 1 PER 10 LIN. FT. OF STRINGER

SPLICE PLATE	
UC-001105	USE WHEN JOINING 1/2" STRINGERS
UC-001106	USE WHEN JOINING 3/8" STRINGERS

INCLUDE 1 SHIM (UC-001107) WHEN JOINING 1/2" TO 3/8" STRINGERS

SUPPORT LEGS	
LEG BRACKET	ADJUSTABLE LEG WELDMENT
UC-001160	UC-001157L-XX & UC-001157R-XX

1 REQ'D PER LEG      \*SPECIFY LENGTH OF LEG. QTY 2 REQ'D PER 5 LIN. FT. OF STRINGER IN LOAD ZONE AND 2 PER 10 LIN. FT. THEREAFTER

DUST CAP	
UCDC-338	QTY 1 PER LEG

INSTALLATION HARDWARE- LEGS*		
QTY	DESCRIPTION	PART NUMBER
6	HHC 5/8-11NC X 2.00 ZP	18831
6	NUT 5/8-11NC ZP	11772
6	COMPRESSION WASHER Ø 5/8 ZP	11752
12	FLAT WASHER Ø5/8 ZP	16814

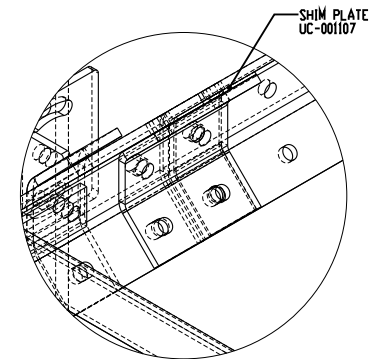
\*QUANTITY IS PER LEG

INSTALLATION HARDWARE- STRAIGHT & DIAGONAL BRACE*		
QTY	DESCRIPTION	PART NUMBER
12	HHC 5/8-11NC X 2.00 ZP	18831
12	NUT 5/8-11NC ZP	11772
12	COMPRESSION WASHER Ø 5/8 ZP	11752
24	FLAT WASHER Ø5/8 ZP	16814

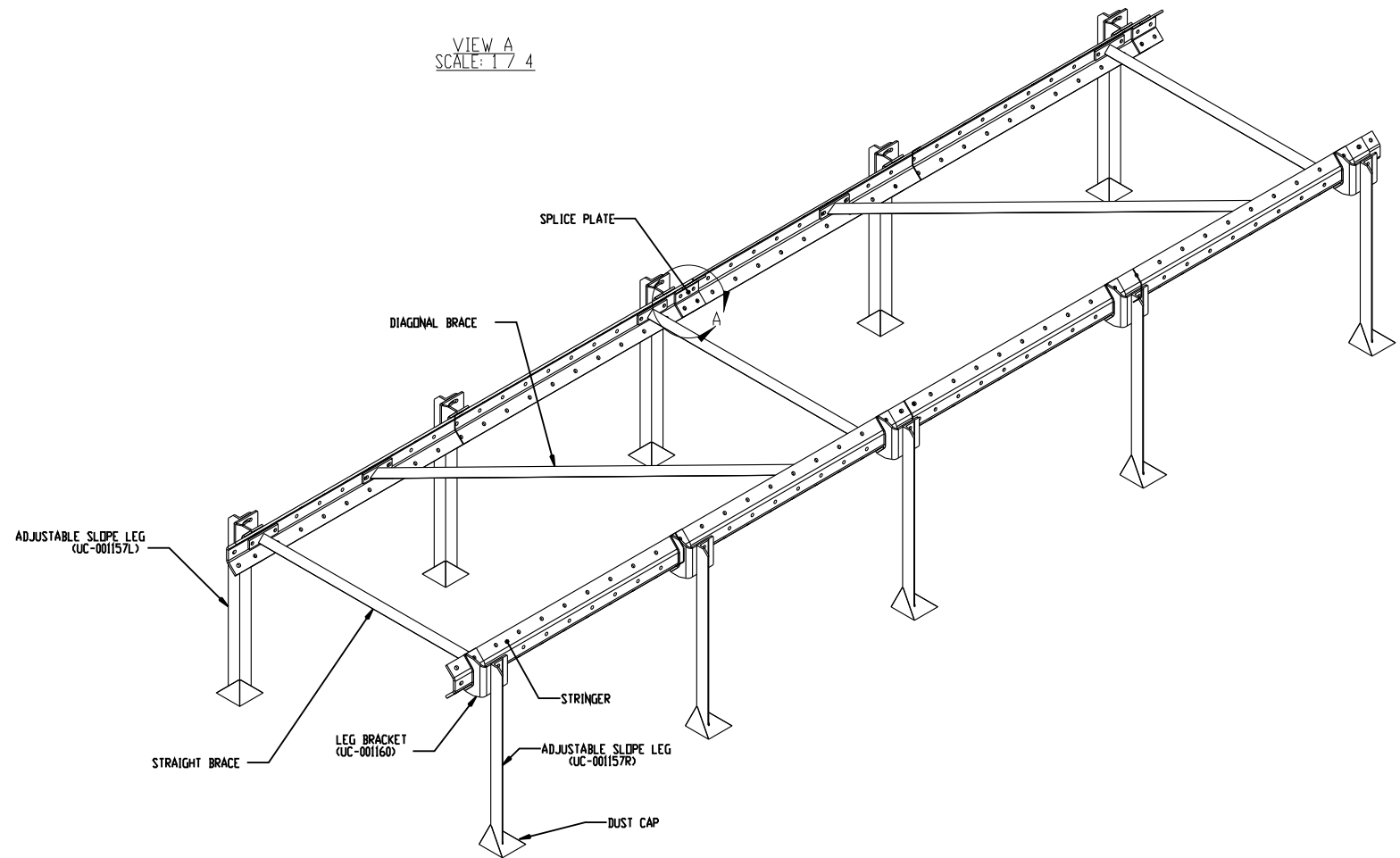
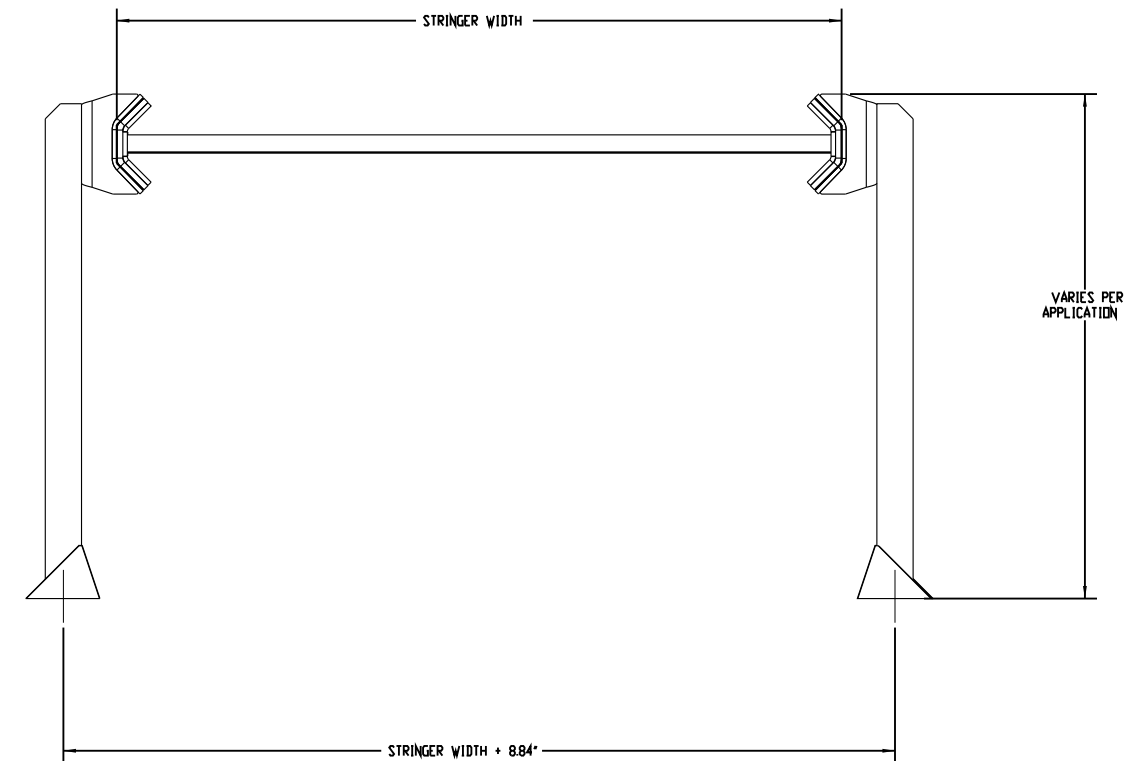
\*QUANTITY IS PER 10 LIN. FT. OF STRINGER

INSTALLATION HARDWARE- SPLICE PLATE*		
QTY	DESCRIPTION	PART NUMBER
6	HHC 5/8-11NC X 2.00 ZP	18831
6	NUT 5/8-11NC ZP	11772
6	COMPRESSION WASHER Ø 5/8 ZP	11752
12	FLAT WASHER Ø5/8 ZP	16814

\*QUANTITY IS PER SPLICE



VIEW A  
SCALE: 1/7.4



SCALE 1/16

NOTES:  
1) ALL DIMENSIONS ARE GIVEN IN INCHES (MM).  
2) ALL DIMENSIONS ARE FOR REFERENCE ONLY.

© copyright 2009 Martin Engineering. All rights reserved. Covered by US and foreign patents pending and issued. ® and TM indicate trademarks of Martin Engineering.

<b>MARTIN ENGINEERING</b>	BUSINESS UNIT CFI	DRAWN JRB DATE 1/28/09
TITLE	EVD STRINGER ASSEMBLY	ENG. DATE 08/31/09
NO	DESCRIPTION	IE DATE --
NO	DESCRIPTION	APPROVED DATE 09/02/09
NO	DESCRIPTION	SCALE: 1:8

DRAWING NUMBER: PH1387      S50059

NO	DESCRIPTION	ECN	DATE	BY