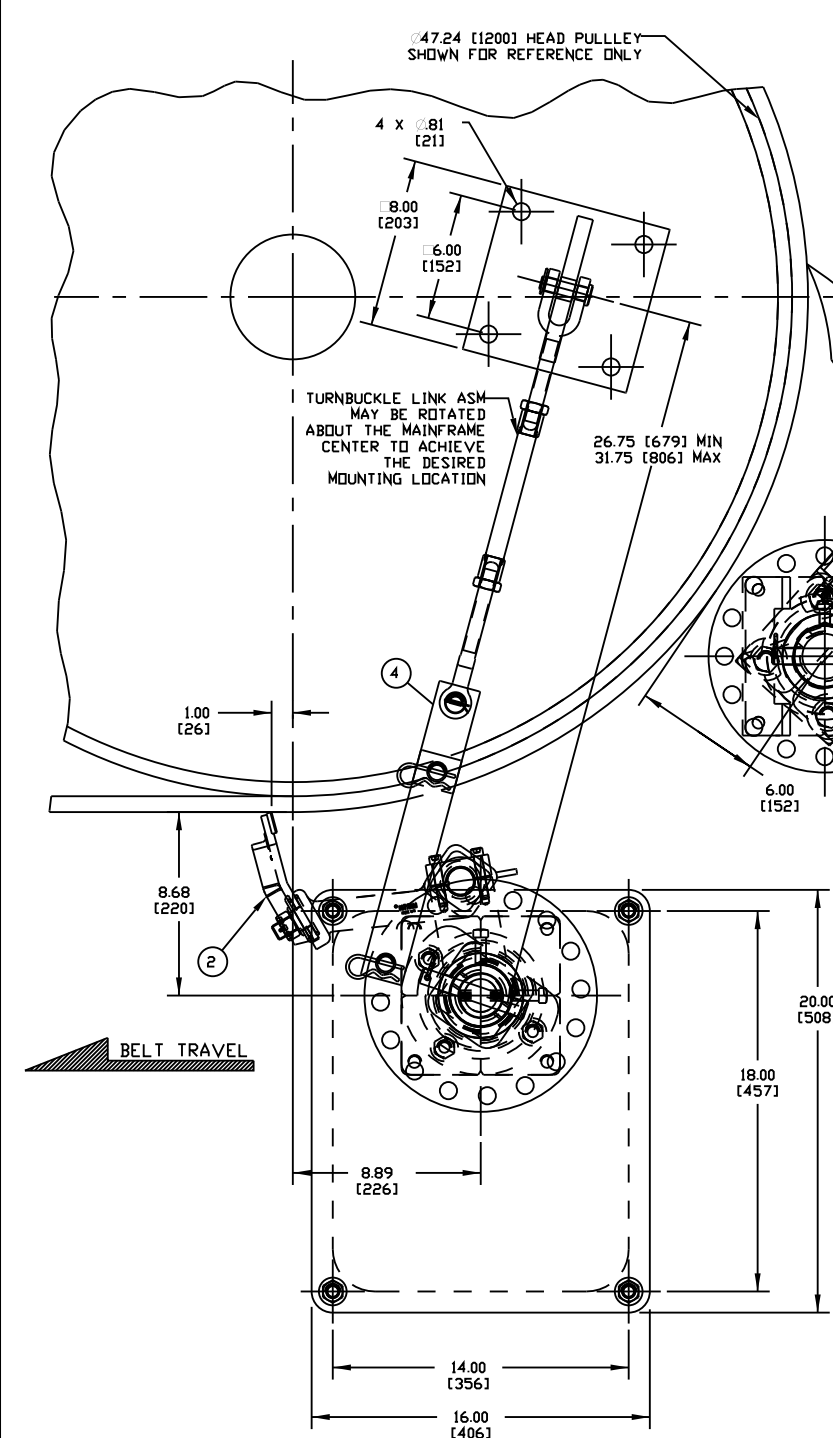


ITEM	QTY.	DESCRIPTION	PART NUMBER
1	1	SHIX PRIMARY CLEANER SHD-600	SHIX-XXXXX6XXXX
2	1	ZHD SECONDARY CLEANER ASM	36328-XX
3	1	SPRING LINK TENSIONER ASM	35978-SXXMX
4	1	MANDREL MOUNT LINK TENSIONER ASM	36535-XX

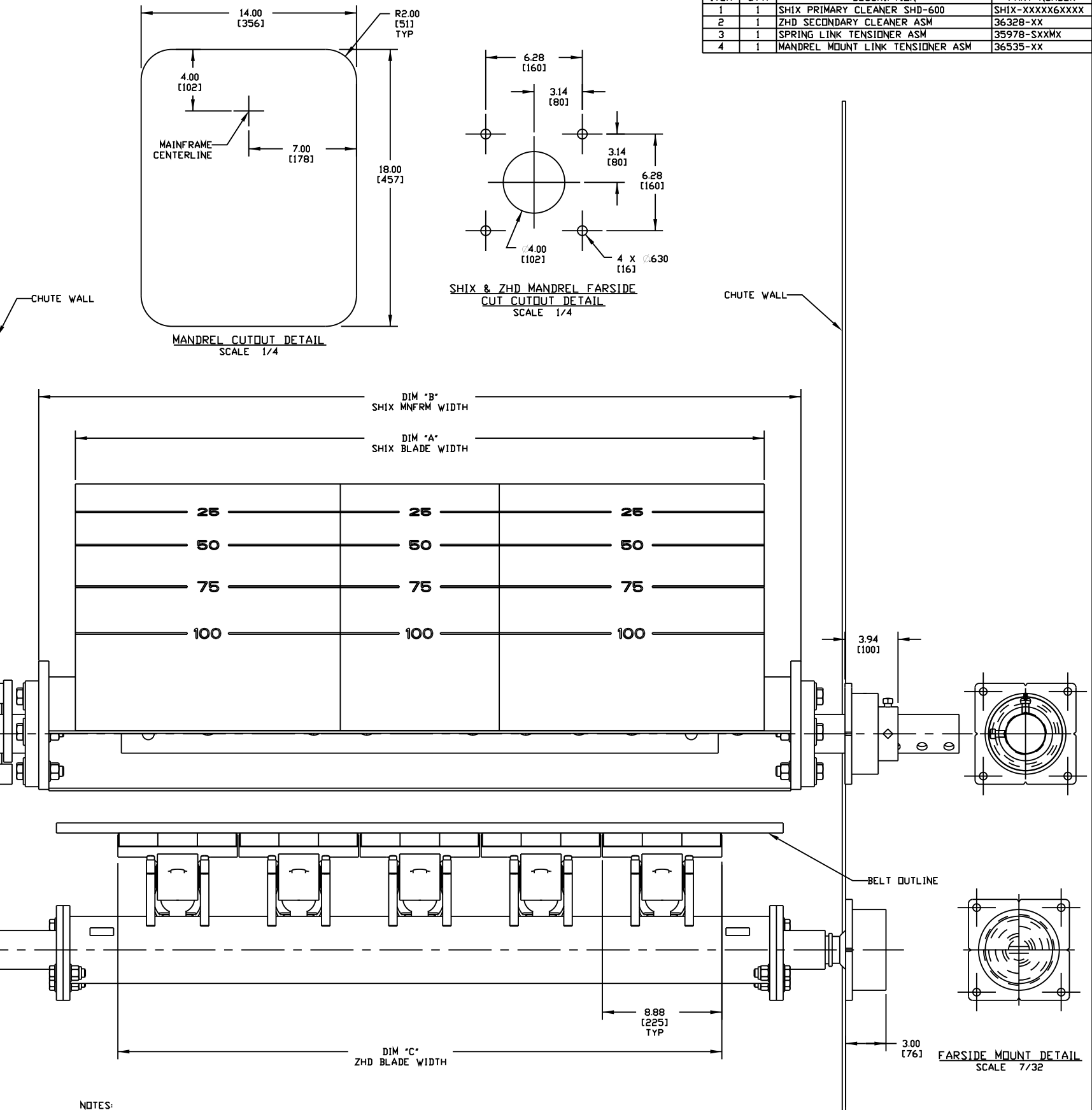
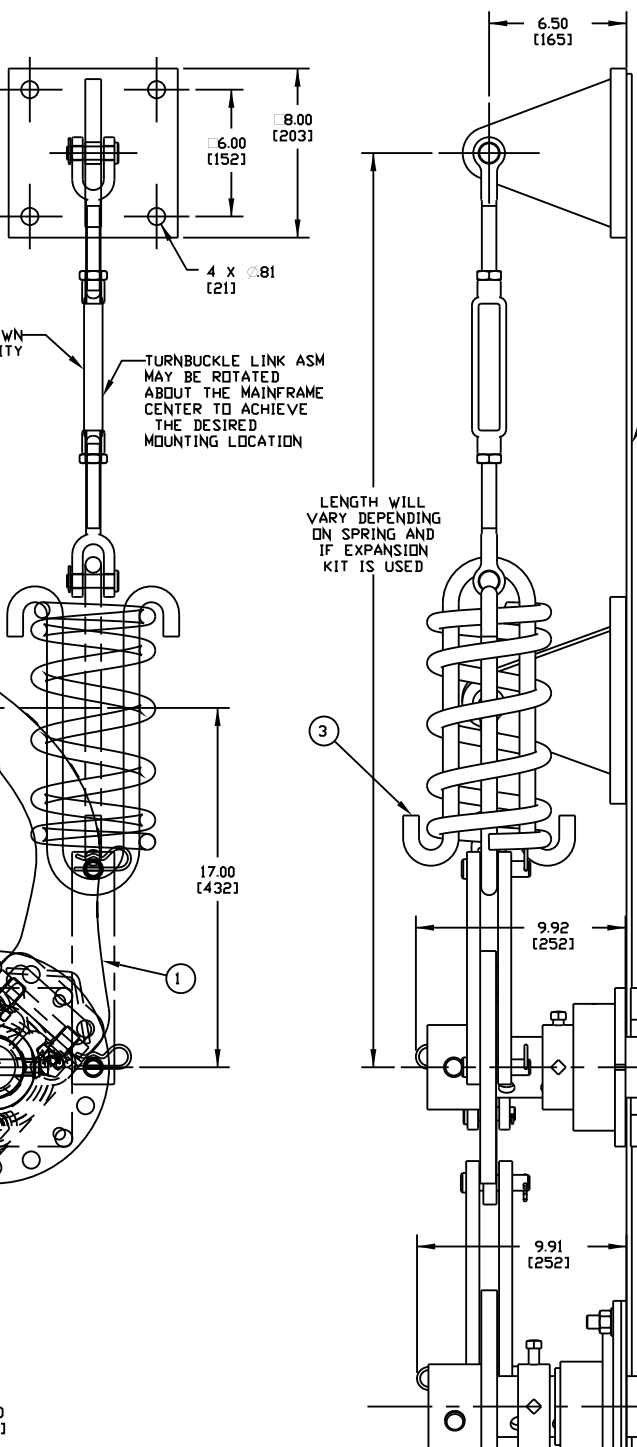
ASSEMBLY PART NUMBER	P/N ITEM 3	DIM "A" BLADE LENGTH	DIM "B" MNFRM LENGTH
SHIX-42X396XXXX	35978-S500M	39.38 [1000]	44.81 [1138]
SHIX-48X436XXXX	35978-D150M	43.31 [1100]	48.75 [1238]
SHIX-54X516XXXX	35978-D150M	51.19 [1300]	56.63 [1438]
SHIX-60X596XXXX	35978-D150M	59.06 [1500]	64.50 [1638]
SHIX-72X716XXXX	35978-S500M	70.88 [1800]	76.31 [1938]
SHIX-84X796XXXX	35978-S500M	78.75 [2000]	84.19 [2138]
SHIX-96X836XXXX	35978-S500M	82.69 [2100]	88.13 [2239]
SHIX-A8X716XXXX	35978-S500M	70.88 [1800]	103.88 [2639]
SHIX-A8X986XXXX	35978-S750M	98.44 [2500]	103.88 [2639]
SHIX-C0XA26XXXX	35978-S750M	102.38 [2600]	107.81 [2738]

P/N ITEM 2	P/N ITEM 4	DIM "C" BLADE WIDTH
36328-24	36535-36	17.88 [454]
36328-30	36535-36	26.88 [683]
36328-36	36535-36	26.88 [683]
36328-42	36535-60	35.88 [911]
36328-48	36535-60	44.88 [1140]
36328-54	36535-60	44.88 [1140]
36328-60	36535-60	53.88 [1369]
36328-72	36535-60	62.88 [1597]
36328-84	36535-84	80.88 [2054]
36328-96	36535-84	89.88 [2283]



NOTES:

- 1) ALL DIMENSIONS ARE GIVEN IN INCHES (MM).
- 2) ALL DIMENSIONS ARE FOR REFERENCE ONLY.
- 3) IN THE SHIX PART NUMBER THE SHIX INDICATES AN EXTRA HEAVY DUTY PRIMARY CLEANER. THE NEXT TWO XX'S INDICATE THE BELT WIDTH. THE NEXT X INDICATES BLADE TYPE
 U = URETHANE
 C = URETHANE W/CERAMIC BEADS
 THE NEXT TWO XX'S INDICATE THE BLADE WIDTH. THE NEXT X INDICATES THE BLADE PROFILE
 1 = SHD-1200
 6 = SHD-600
 THE NEXT X INDICATES THE URETHANE TYPE
 B = BROWN
 G = GREEN
 O = ORANGE
 Y = CERAMIC/YELLOW
 THE NEXT X INDICATES THE MAINFRAME OPTIONS
 P = PAINTED ORANGE MAINFRAME
 C = CORROSION RESISTANT MAINFRAME
 THE NEXT X INDICATES THE END WELDMENT LENGTHS (INCHES)
 2 = 20
 3 = 30
 4 = 40
 THE NEXT X INDICATES THE TENSIONER AND ACCESSORY OPTIONS
 L = WITH PAINTED LINK TENSIONER
 C = WITH CORROSION RESISTANT LINK TENSIONER



NOTES:

- 4) WHERE EXTREME OR UNUSUAL CONDITIONS EXIST, OR SPECIAL MAINFRAME LENGTHS ARE REQUIRED, CONTACT MARTIN.
- 5) THE SHIX PRECLEANER BLADES ARE DESIGNED TO REMOVE HEAVY CARRYBACK ONLY. DO NOT OVERTENSION.
- 6) BLADE COVERAGE WILL BE LESS THAN BELT WIDTH DUE TO POSSIBLE MISTRACKING OR DAMAGED EDGES OF BELT.
- 7) REQUIRED EFFECTIVE HEAD PULLEY DIAMETER (HEAD PULLEY + LAGGING + BELT THICKNESS) IS 48.00 [1219] MAXIMUM FOR THE SHIX-600.
- 8) FRAME LENGTH IS SUPPLIED LONGER THAN REQUIRED, CUT IN FIELD TO DESIRED LENGTH.
- 9) TENSIONER ASSEMBLY MAY BE BOLTED OR WELDED IN PLACE. MARTIN ENGINEERING RECOMMENDS BOLTING WHEN APPLICABLE FOR EASIER MAINTENANCE AND ACCESSIBILITY.
- 10) REFER TO OPERATOR'S MANUAL'S, FOR INSTALLATION AND TENSIONING INSTRUCTIONS.
- 11) CLEANERS ARE SHOWN IN RECOMMENDED POSITIONS.

Copyright 2004 Martin Engineering. All rights reserved. Covered by US and foreign patents pending and issued. ® and TM indicate trademarks of Martin Engineering.

MARTIN ENGINEERING-USA
NEPONSSET, IL USA

TITLE: SHIX PRIMARY CLEANER AND ZHD SECONDARY CLEANER SPR LINK/MANDREL TENS

DATE: 01/22/10
DRAWN: JAP
CHECKED: JAP
DATE: 01/25/10
APPROVED: DM
DATE: 01/26/10
SCALE: 7/32

SALES DRAWING

NO. DESCRIPTION ECN DATE BY

REVISION

M00801 S50071

NO.	DESCRIPTION	ECN	DATE	BY
A	ROTATED AND RELOCATED TURNBUCKLE TO SECONDARY CLEANER (M00801)	----	05/04/10	RND