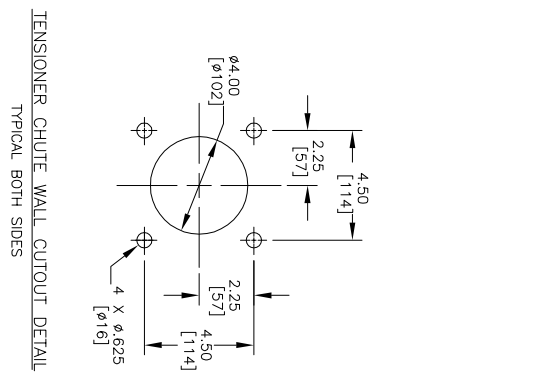
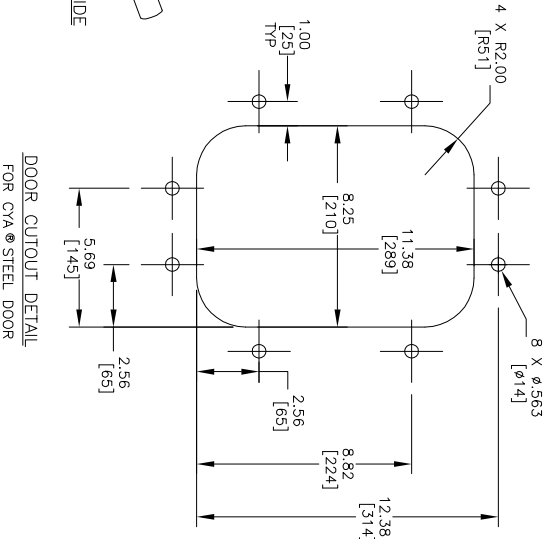
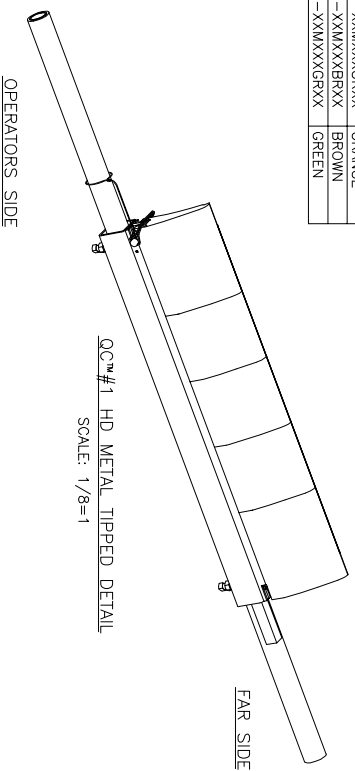
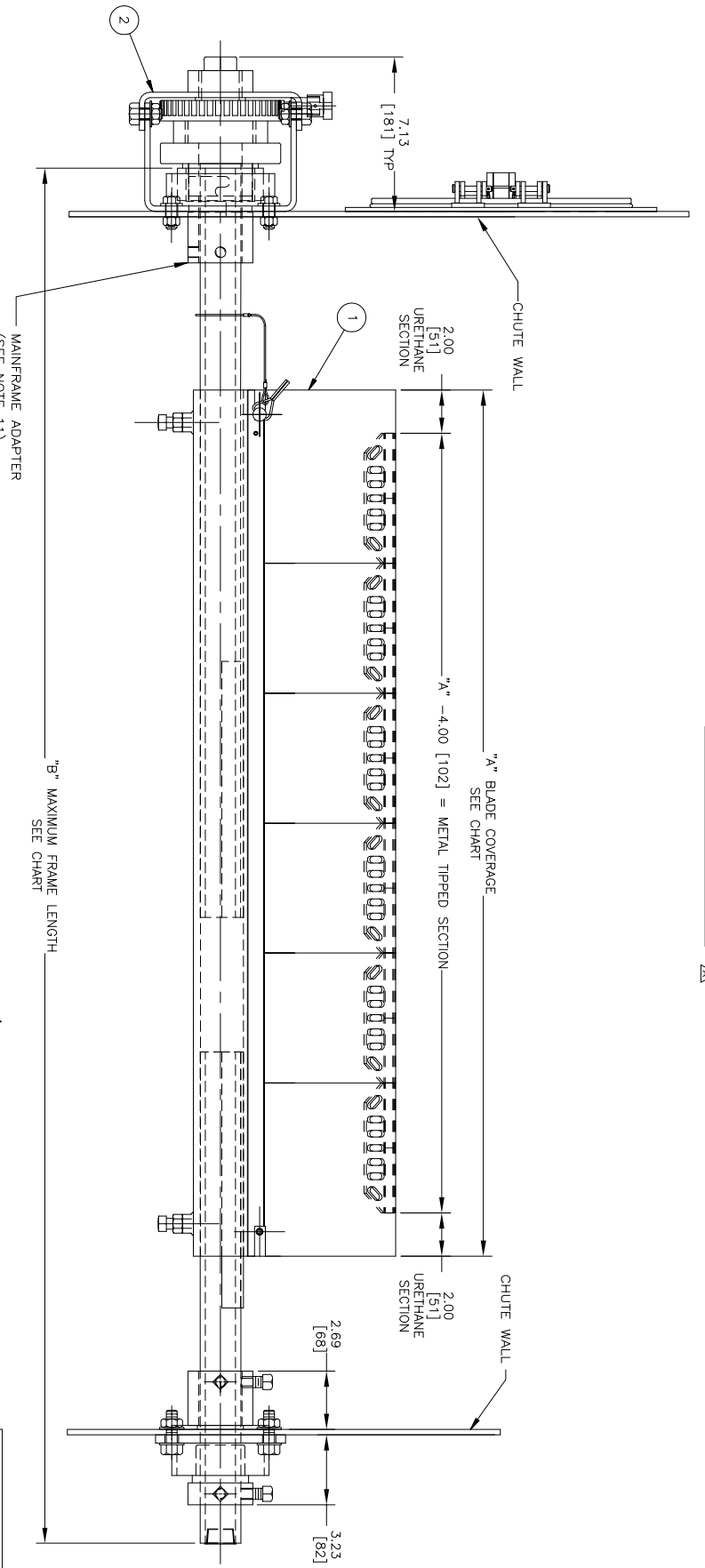
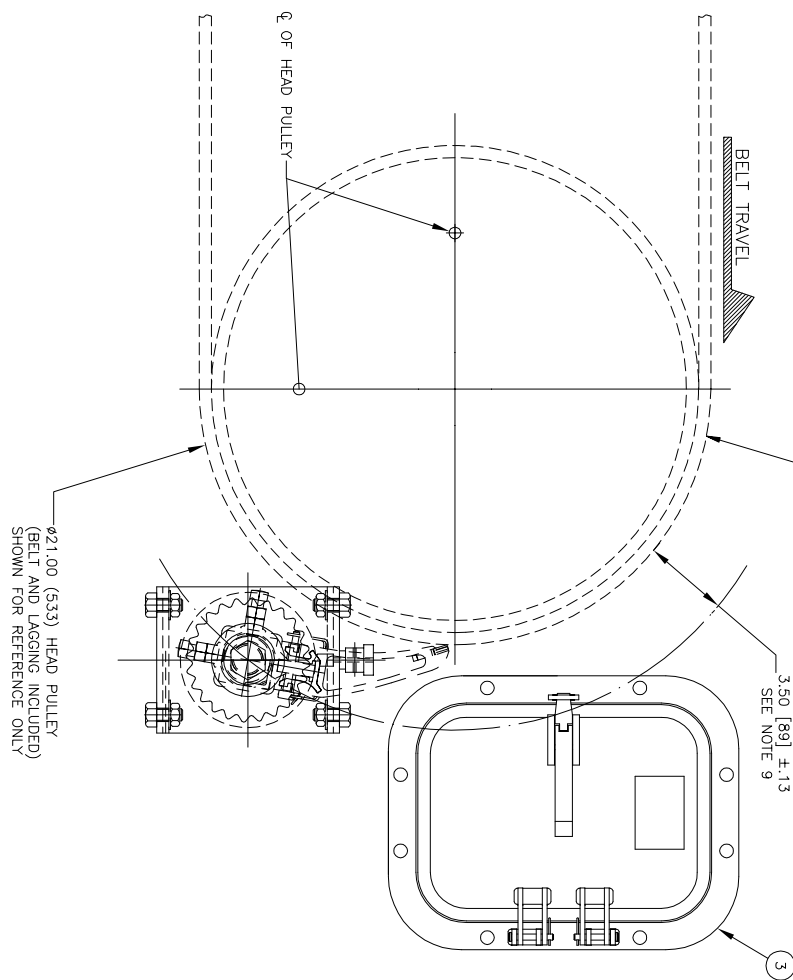
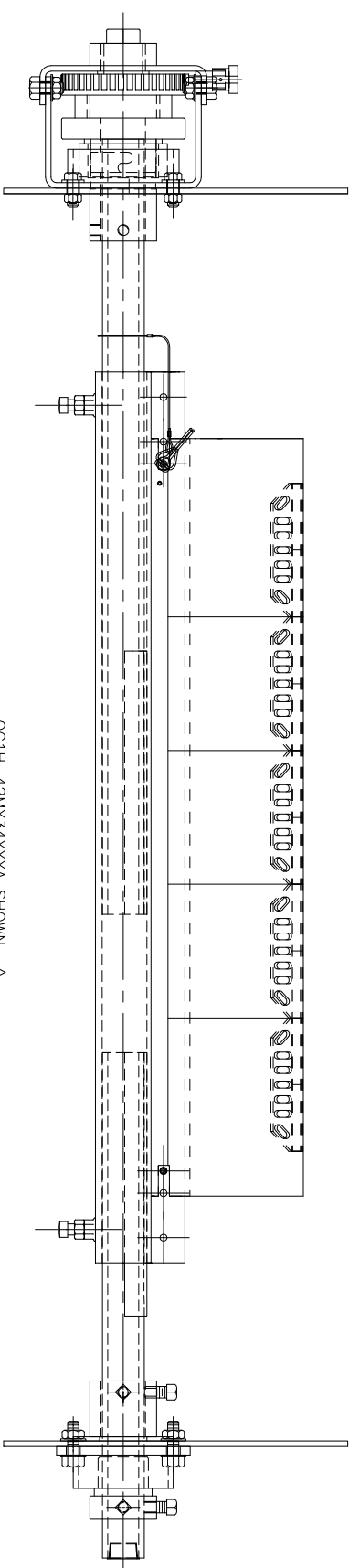
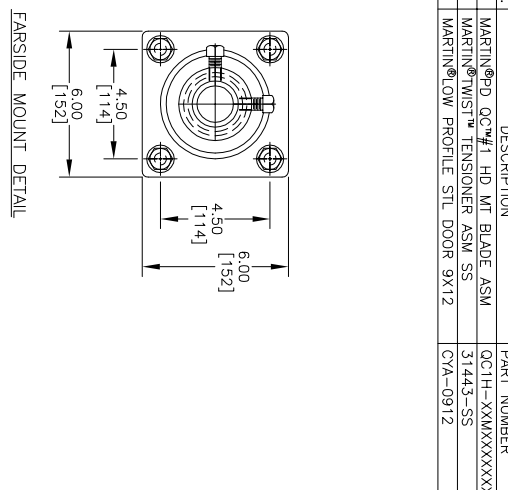


PART NUMBER	BELT WIDTH	DIMENSION "A"	DIMENSION "B"
QC1H-18MX16XXXX	18.00 [400-500]	16.00 [406]	44.00 [1119]
QC1H-24MX16XXXX	24.00 [500-550]	16.00 [406]	50.00 [1270]
QC1H-24MX22XXXX	24.00 [500-550]	22.00 [559]	50.00 [1270]
QC1H-30MX22XXXX	30.00 [650-800]	22.00 [559]	62.00 [1575]
QC1H-30MX28XXXX	30.00 [650-800]	28.00 [711]	62.00 [1575]
QC1H-36MX28XXXX	36.00 [800-1000]	28.00 [711]	68.00 [1727]
QC1H-36MX34XXXX	36.00 [800-1000]	34.00 [864]	68.00 [1727]
QC1H-42MX34XXXX	42.00 [1000-1200]	40.00 [1016]	74.00 [1880]
QC1H-42MX40XXXX	42.00 [1000-1200]	40.00 [1016]	74.00 [1880]
QC1H-48MX40XXXX	48.00 [1200-1400]	40.00 [1016]	80.00 [2032]
QC1H-48MX46XXXX	48.00 [1200-1400]	46.00 [1168]	80.00 [2032]

ASSEMBLY PART NO.	COLOR
QC1H-XXXXXXORXX	ORANGE
QC1H-XXXXXXBRXX	BROWN
QC1H-XXXXXXGRXX	GREEN



- NOTES:
- 1) ALL DIMENSIONS ARE GIVEN IN INCHES [MM] AND ARE FOR REFERENCE ONLY.
  - 2) IN THE QC1H-XXXXXX PART NUMBER THE FIRST TWO XX'S INDICATE THE BELT WIDTH, THE "M" INDICATES A METAL TIPPED BLADE, THE NEXT X INDICATES THE BLADE TYPE: 0 = NO BLADES, T = MILD STEEL TC TIPPED BLADE, C = CORROSION RESISTANT TC TIPPED BLADE, THE NEXT TWO XX'S INDICATE BLADE COVERAGE: 00 = NO BLADES, THE NEXT XX'S INDICATE BLADE COLOR: (SEE CHART), THE NEXT X INDICATES THE MAINFRAME TYPE: P = STANDARD DUTY, S = STAINLESS STEEL MAINFRAME, THE LAST X INDICATES ACCESSORY OPTIONS: 0 = NO OPTIONS, T = STD TWIST TENSIONER, S = STD SPRING TENSIONER, A = STAINLESS TWIST TENSIONER, B = STAINLESS SPRING TENSIONER.
  - 3) THE PRE-CLEANER BLADE IS DESIGNED FOR HEAD PULLEY'S WITH A MINIMUM EFFECTIVE DIAMETER OF 12.00 [305].
  - 4) CLEANER IS SHOWN IN RECOMMENDED WORKING POSITION.
  - 5) WELD EXTENSION OR UNSUBSTANTIATED EXIST. OR SPECIAL MAINFRAME WELD EXTENSION REQUIRED CONTACT MARTIN ENGINEERING.
  - 6) TWIST TENSIONER MAY BE BOLTED OR WELDED IN PLACE. MARTIN ENGINEERING RECOMMENDS BOLTING WHEN APPLICABLE FOR EASIER MAINTENANCE AND ACCESSIBILITY.
  - 7) REFER TO OPERATOR'S MANUAL, M3814 FOR COMPLETE INSTALLATION INSTRUCTIONS.
  - 8) FOR BELT WIDTHS 54.00 [1400-1600] AND LARGER, MARTIN ENGINEERING RECOMMENDS USING A DUAL SS TWIST TENSIONER (P/N 31443-DSS). SEE S50076-D.
  - 9) CLEANER CAN BE LOCATED ANYWHERE ALONG THE ARC, AS LONG AS THE MAINFRAME IS OUT OF MATERIAL TRAJECTORY AND THE BLADE TIPS ARE BELOW THE HORIZONTAL CENTERLINE OF THE HEAD PULLEY.
  - 10) THE QC#1 HD MT PRE-CLEANER BLADES ARE DESIGNED TO REMOVE HEAVY SPLICES.
  - 11) FOR SEVERE APPLICATIONS WELD THE MAINFRAME ADAPTER DIRECTLY TO MAINFRAME.
  - 12) BLADE COVERAGE IS LESS THAN BELT WIDTH, DUE TO POSSIBLE MISTRACKING OR DAMAGED EDGES OF THE BELT.



ITEM	QTY.	DESCRIPTION	PART NUMBER
1	1	MARTIN® HD MT BLADE ASM	QC1H-XXXXXX
2	1	MARTIN® TWIST TENSIONER ASM SS	31443-SS
3	1	MARTIN® LOW PROFILE STL DOOR 9X12	CVA-0912

NO.	DATE	BY	DESCRIPTION
1	06/03/15	RND	CHD P/N FROM 31443 TO 31443-SS / CHD P/N END SURFACE LETTER 'D' A FOR CWR, M/SS TIPS / RWD TAN STD BLADE DESIGN (SEE CHART)

TITLE	DATE	SCALE
MARTIN® QC#1 HD METAL TIPPED ASM WITH TWIST™ TENSIONER ASM 9 X 12 STEEL DOOR	04/19/10	1/4=1

Copyright 2010 Martin Engineering. All rights reserved. Covered by U.S. and foreign patents pending and issued. ® and ™ indicate trademarks of Martin Engineering.

**MARTIN ENGINEERING**  
NEPONSET ILLINOIS USA

SALES DRAWING S50076-S  
DATE 04/29/10  
SCALE 1/4=1