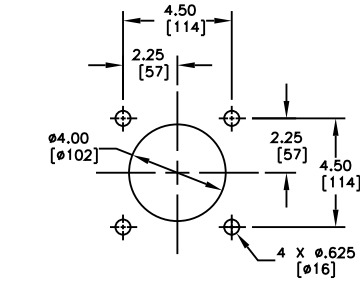
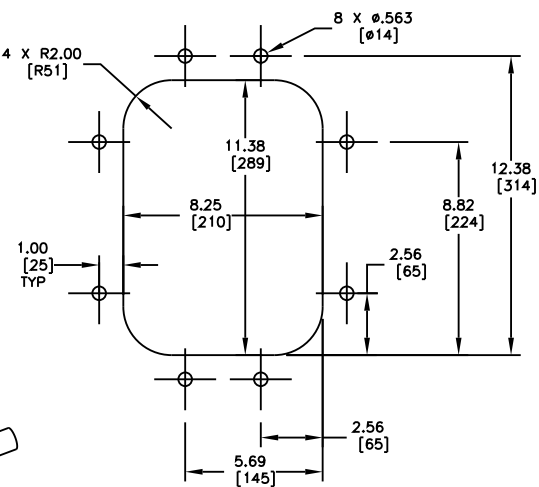
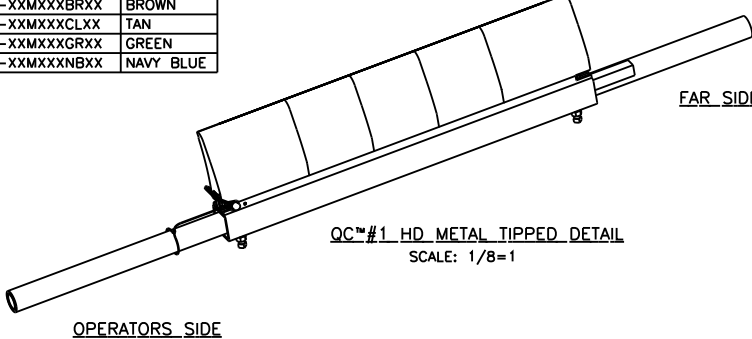


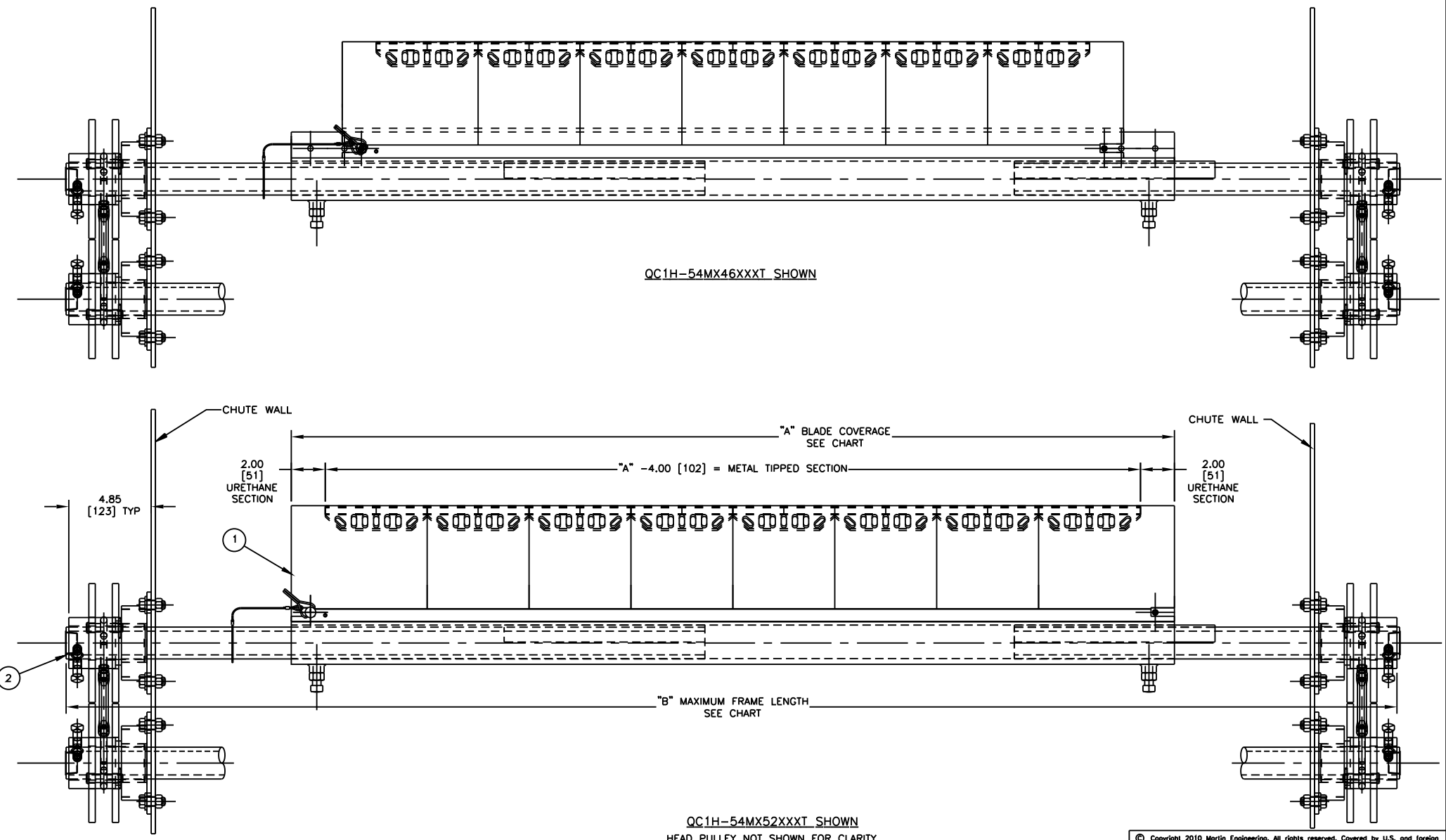
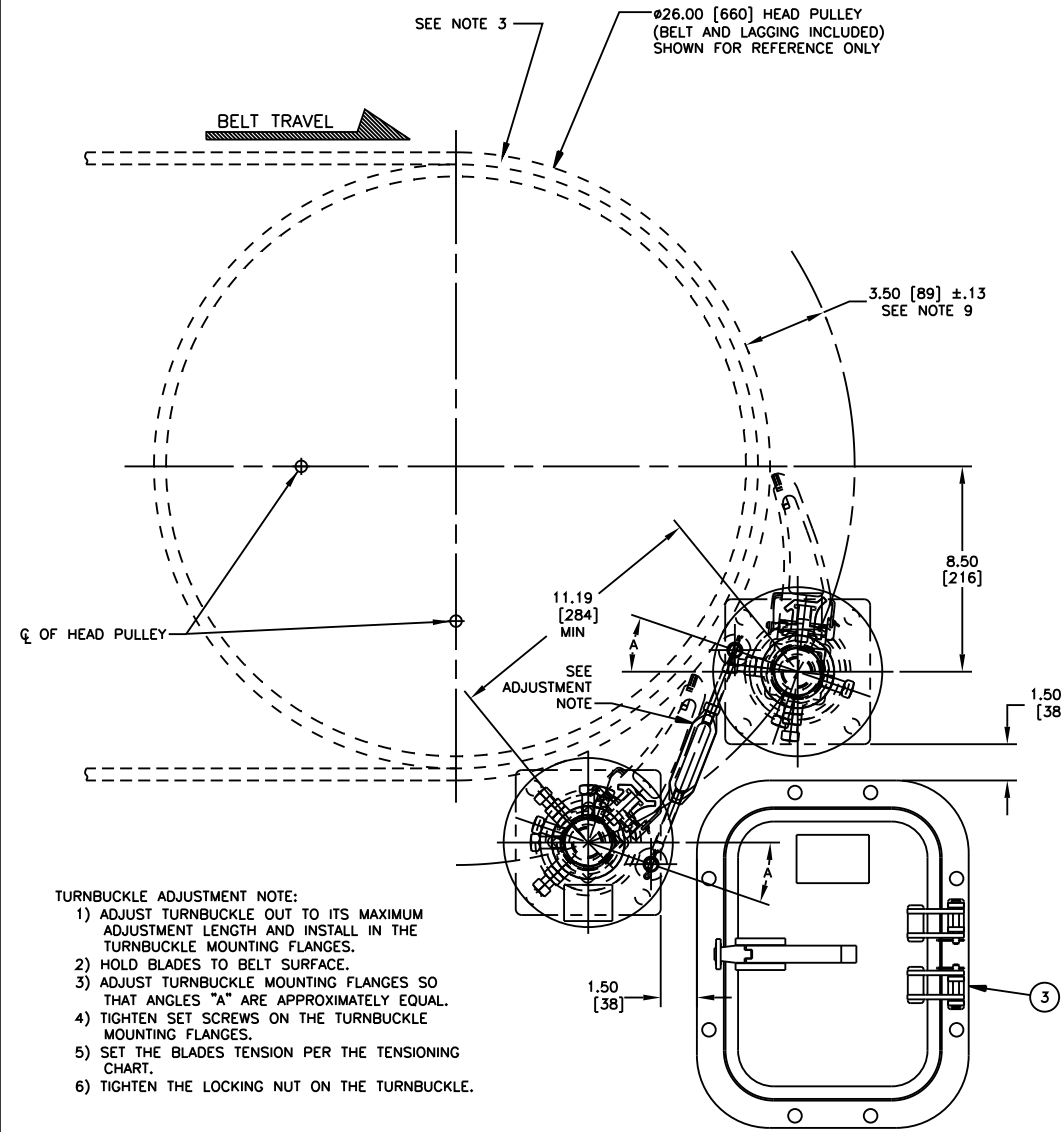
PART NUMBER	BELT WIDTH	DIMENSION "A" BLADE COVERAGE	DIMENSION "B" FRAME LENGTH
QC1H-54MX46XXXX	54.00 [1400-1600]	46.00 [1168]	86.00 [2184]
QC1H-54MX52XXXX	54.00 [1400-1600]	52.00 [1321]	86.00 [2184]
QC1H-60MX52XXXX	60.00 [1600-1800]	52.00 [1321]	98.00 [2489]
QC1H-60MX58XXXX	60.00 [1600-1800]	58.00 [1473]	98.00 [2489]
QC1H-66MX58XXXX	66.00 [1600-1800]	58.00 [1473]	104.00 [2642]
QC1H-66MX64XXXX	66.00 [1600-1800]	64.00 [1626]	104.00 [2642]
QC1H-72MX64XXXX	72.00 [1800-2000]	64.00 [1626]	110.00 [2794]
QC1H-72MX70XXXX	72.00 [1800-2000]	70.00 [1778]	110.00 [2794]
QC1H-78MX70XXXX	78.00 [1800-2000]	70.00 [1778]	117.00 [2972]
QC1H-78MX76XXXX	78.00 [1800-2000]	76.00 [1930]	117.00 [2972]
QC1H-84MX76XXXX	84.00 [2000-2200]	76.00 [1930]	123.00 [3124]
QC1H-84MX82XXXX	84.00 [2000-2200]	82.00 [2083]	123.00 [3124]
QC1H-96MX88XXXX	96.00 [2200-2400]	88.00 [2235]	135.00 [3429]
QC1H-96MX94XXXX	96.00 [2200-2400]	94.00 [2388]	135.00 [3429]

ASSEMBLY PART NO.	COLOR
QC1H-XXMXXORXX	ORANGE
QC1H-XXMXXBRXX	BROWN
QC1H-XXMXXCLXX	TAN
QC1H-XXMXXGRXX	GREEN
QC1H-XXMXXNBXX	NAVY BLUE



- NOTES:
- ALL DIMENSIONS ARE GIVEN IN INCHES [MM] AND ARE FOR REFERENCE ONLY.
 - IN THE QC1H-XXMXXXXXX PART NUMBER THE FIRST TWO XX'S INDICATE THE BELT WIDTH, THE "M" INDICATES A METAL TIPPED BLADE, THE NEXT X INDICATES THE BLADE TYPE: 0 = NO BLADES, T = MILD STEEL TC TIPPED BLADE, C = CORROSION RESISTANT TC TIPPED BLADE, THE NEXT TWO XX'S INDICATE BLADE COVERAGE: 00 = NO BLADES, THE NEXT TWO XX'S INDICATE BLADE COLOR: (SEE CHART), THE NEXT X INDICATES THE MAINFRAME TYPE: P = STANDARD DUTY, S = STAINLESS STEEL MAINFRAME, THE LAST X INDICATES ACCESSORY OPTIONS: 0 = NO OPTIONS, T = STD TWIST TENSIONER, S = STD SPRING TENSIONER, A = STAINLESS TWIST TENSIONER, B = STAINLESS SPRING TENSIONER.
 - EXAMPLES:
QC1H-36MT34BRPT = 36" BELT WIDTH, 34" BROWN MILD STL TC TIPPED BLADES STD DUTY MNFRM, WITH A TWIST TENSIONER.
QC1H-36MT28ORPO = 36" BELT WIDTH, 28" ORANGE MILD STL TC TIPPED BLADES STD DUTY MNFRM, WITHOUT A TENSIONER.
 - THE 1-2-4 TENSIONER IS DESIGNED FOR HEAD PULLEY'S WITH A MINIMUM EFFECTIVE DIAMETER OF 24.00 [610].
 - CLEANER IS SHOWN IN RECOMMENDED WORKING POSITION.
 - WHERE EXTREME OR UNUSUAL CONDITIONS EXIST, OR SPECIAL MAINFRAME LENGTHS ARE REQUIRED CONTACT MARIN ENGINEERING.
 - 1-2-4 TENSIONER MAY BE BOLTED OR WELDED IN PLACE. MARTIN ENGINEERING RECOMMENDS BOLTING WHEN APPLICABLE FOR EASIER MAINTENANCE AND ACCESSIBILITY.
 - REFER TO OPERATOR'S MANUAL M3814 AND M3817 FOR COMPLETE INSTALLATION INSTRUCTIONS.
 - FOR BELT WIDTHS 48.00 [1200-1400] AND UNDER, MARTIN ENGINEERING RECOMMENDS USING A 1-2-4 TENSIONER (P/N 38677). SEE S50078-S.
 - CLEANER CAN BE LOCATED ANYWHERE ALONG THE ARC, AS LONG AS THE MAINFRAME IS OUT OF MATERIAL TRAJECTORY AND THE BLADE TIPS ARE BELOW THE HORIZONTAL CENTERLINE OF THE HEAD PULLEY.
 - THE QC#1 HD MT PRE-CLEANER BLADES ARE DESIGNED TO REMOVE HEAVY CARRYBACK ONLY. DO NOT OVERTENSION. DO NOT USE ON BELTS WITH MECHANICAL SPLICES.
 - BLADE COVERAGE IS LESS THAN BELT WIDTH, DUE TO POSSIBLE MISTRACKING OR DAMAGED EDGES OF THE BELT.

ITEM	QTY.	DESCRIPTION	PART NUMBER
1	2	MARTIN QC#1 HD MT BLADE ASM	QC1H-XXMXXXXXX
2	1	1-2-4 DUAL TENSIONER ASM	38677-2
3	1	MARTIN LOW PROFILE STL DOOR 9X12	CYA-0912



QC1H-54MX52XXXX SHOWN
HEAD PULLEY NOT SHOWN FOR CLARITY

Copyright 2010 Martin Engineering. All rights reserved. Covered by U.S. and foreign patents pending and issued. ® and TM indicate trademarks of Martin Engineering.

MARTIN ENGINEERING NEPONSET ILLINOIS USA

TITLE: MARTIN QC#1 HD METAL TIPPED ASM WITH DUAL 1-2-4 TENSIONER ASM 9 X 12 STEEL DOOR

NO. DESCRIPTION ECN DATE BY SALES DRAWING

AutoCAD REVISION

APPROVED: [Signature] DATE: 08/19/10

SCALE: 1/4=1