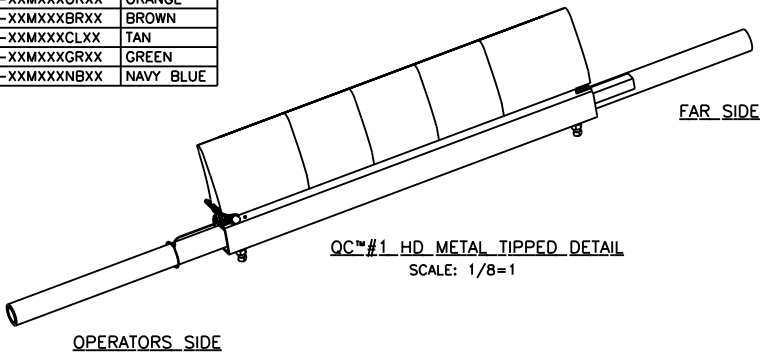
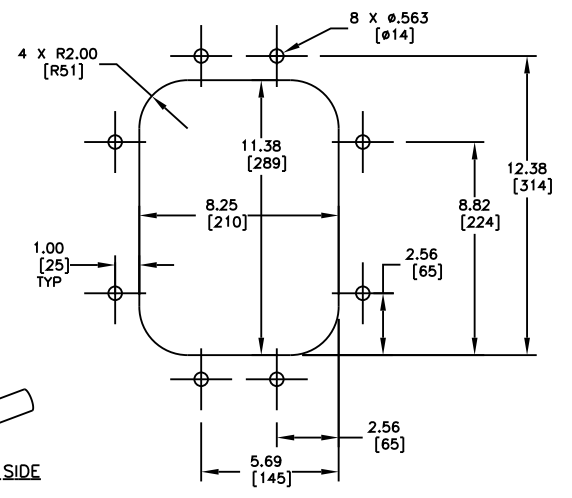


PART NUMBER	BELT WIDTH	DIMENSION "A" BLADE COVERAGE	DIMENSION "B" FRAME LENGTH
QC1H-18MX16XXXX	18.00 [400-500]	16.00 [406]	44.00 [1119]
QC1H-24MX16XXXX	24.00 [500-650]	16.00 [406]	50.00 [1270]
QC1H-24MX22XXXX	24.00 [500-650]	22.00 [559]	50.00 [1270]
QC1H-30MX22XXXX	30.00 [650-800]	22.00 [559]	62.00 [1575]
QC1H-30MX28XXXX	30.00 [650-800]	28.00 [711]	62.00 [1575]
QC1H-36MX28XXXX	36.00 [800-1000]	28.00 [711]	68.00 [1727]
QC1H-36MX34XXXX	36.00 [800-1000]	34.00 [864]	68.00 [1727]
QC1H-42MX34XXXX	42.00 [1000-1200]	34.00 [864]	74.00 [1880]
QC1H-42MX40XXXX	42.00 [1000-1200]	40.00 [1016]	74.00 [1880]
QC1H-48MX40XXXX	48.00 [1200-1400]	40.00 [1016]	80.00 [2032]
QC1H-48MX46XXXX	48.00 [1200-1400]	46.00 [1168]	80.00 [2032]

ASSEMBLY PART NO.	COLOR
QC1H-XXMXXORXX	ORANGE
QC1H-XXMXXBRXX	BROWN
QC1H-XXMXXCLXX	TAN
QC1H-XXMXXGRXX	GREEN
QC1H-XXMXXNBXX	NAVY BLUE

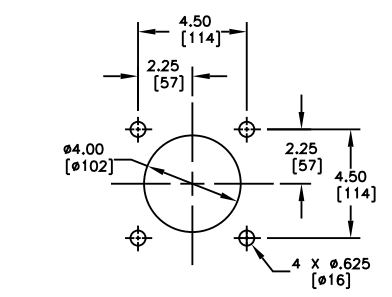


QC#1 HD METAL TIPPED DETAIL
SCALE: 1/8=1



DOOR CUTOUT DETAIL
FOR STEEL ACCESS DOOR

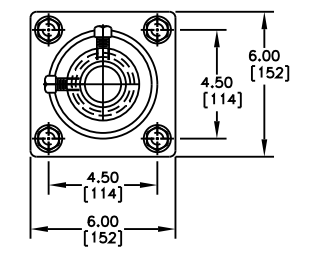
TENSIONING CHART (AFTER BLADE CONTACTS BELT)	
BELT WIDTH	NUMBER OF FULL TURNS OF TURNBUCKLE
18 [400-500]	1
24-42 [500-1200]	2
48 [1200-1400]	3



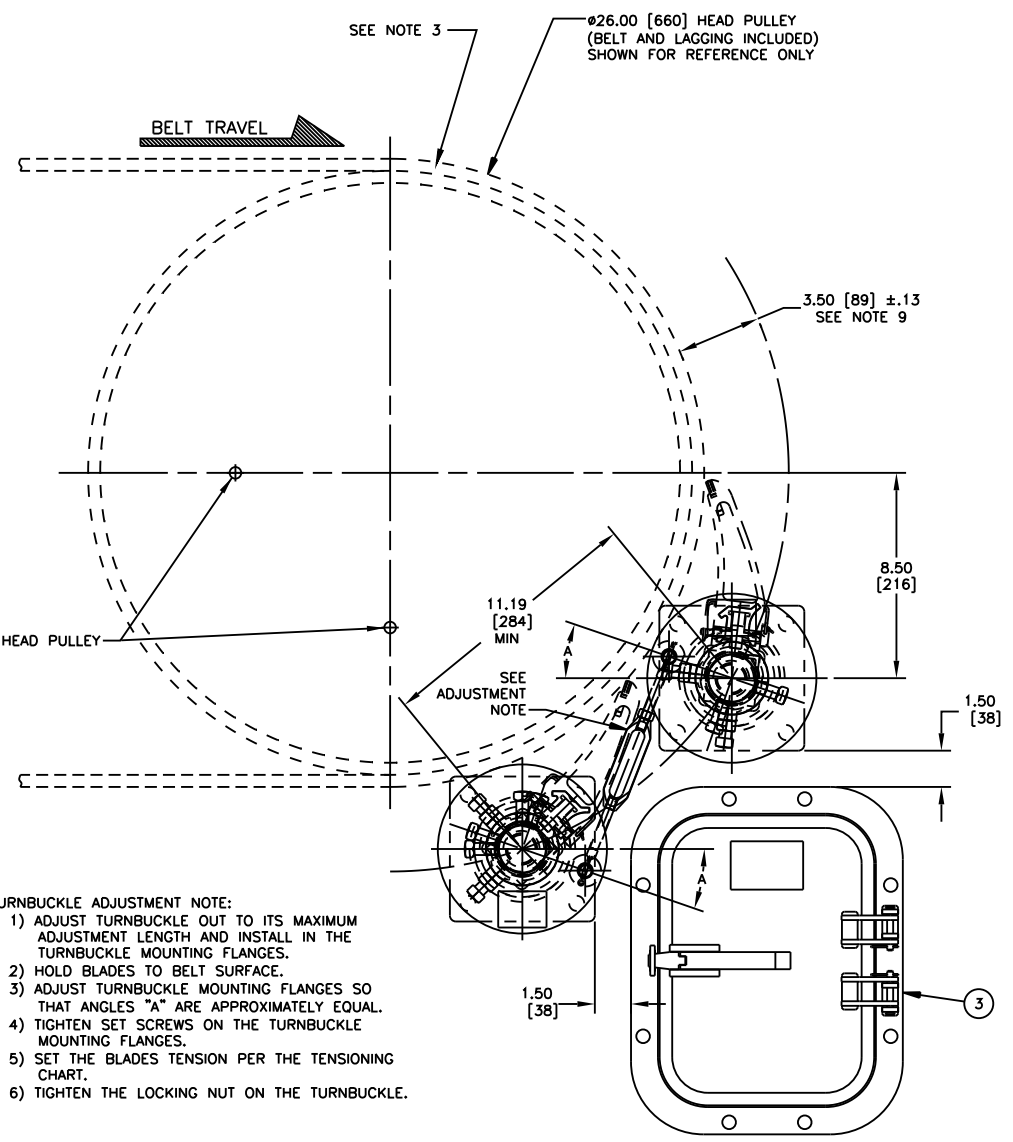
TENSIONER CHUTE WALL CUTOUT DETAIL
TYPICAL BOTH SIDES

- NOTES:
- 1) ALL DIMENSIONS ARE GIVEN IN INCHES [MM] AND ARE FOR REFERENCE ONLY.
 - 2) IN THE QC1H-XXMXXXXXX PART NUMBER THE FIRST TWO XX'S INDICATE THE BELT WIDTH, THE "M" INDICATES A METAL TIPPED BLADE, THE NEXT X INDICATES THE BLADE TYPE: 0 = NO BLADES, T = MILD STEEL TC TIPPED BLADE, C = CORROSION RESISTANT TC TIPPED BLADE. THE NEXT TWO XX'S INDICATE BLADE COVERAGE: 00 = NO BLADES. THE NEXT TWO XX'S INDICATE BLADE COLOR: (SEE CHART). THE NEXT X INDICATES THE MAINFRAME TYPE: P = STANDARD DUTY, S = STAINLESS STEEL MAINFRAME. THE LAST X INDICATES ACCESSORY OPTIONS: 0 = NO OPTIONS, T = STD TWIST TENSIONER, S = STD SPRING TENSIONER, A = STAINLESS TWIST TENSIONER, B = STAINLESS SPRING TENSIONER.
 - 3) THE 1-2-4 TENSIONER IS DESIGNED FOR HEAD PULLEY'S WITH A MINIMUM EFFECTIVE DIAMETER OF 24.00 [610].
 - 4) CLEANER IS SHOWN IN RECOMMENDED WORKING POSITION.
 - 5) WHERE EXTREME OR UNUSUAL CONDITIONS EXIST, OR SPECIAL MAINFRAME LENGTHS ARE REQUIRED CONTACT MARIN ENGINEERING.
 - 6) 1-2-4 TENSIONER MAY BE BOLTED OR WELDED IN PLACE. MARTIN ENGINEERING RECOMMENDS BOLTING WHEN APPLICABLE FOR EASIER MAINTENANCE AND ACCESSIBILITY.
 - 7) REFER TO OPERATOR'S MANUALS M3814 AND M3817 FOR COMPLETE INSTALLATION INSTRUCTIONS.
 - 8) FOR BELT WIDTHS 54.00 [1400-1600] AND LARGER, MARTIN ENGINEERING RECOMMENDS USING A DUAL 1-2-4 TENSIONER (P/N 38677-2). SEE S50078-D.
 - 9) CLEANER CAN BE LOCATED ANYWHERE ALONG THE ARC, AS LONG AS THE MAINFRAME IS OUT OF MATERIAL TRAJECTORY AND THE BLADE TIPS ARE BELOW THE HORIZONTAL CENTERLINE OF THE HEAD PULLEY.
 - 10) THE QC#1 HD MT PRE-CLEANER BLADES ARE DESIGNED TO REMOVE HEAVY CARRYBACK ONLY. DO NOT OVERTENSION. DO NOT USE ON BELTS WITH MECHANICAL SPLICES.
 - 11) BLADE COVERAGE IS LESS THAN BELT WIDTH, DUE TO POSSIBLE MISTRACKING OR DAMAGED EDGES OF THE BELT.

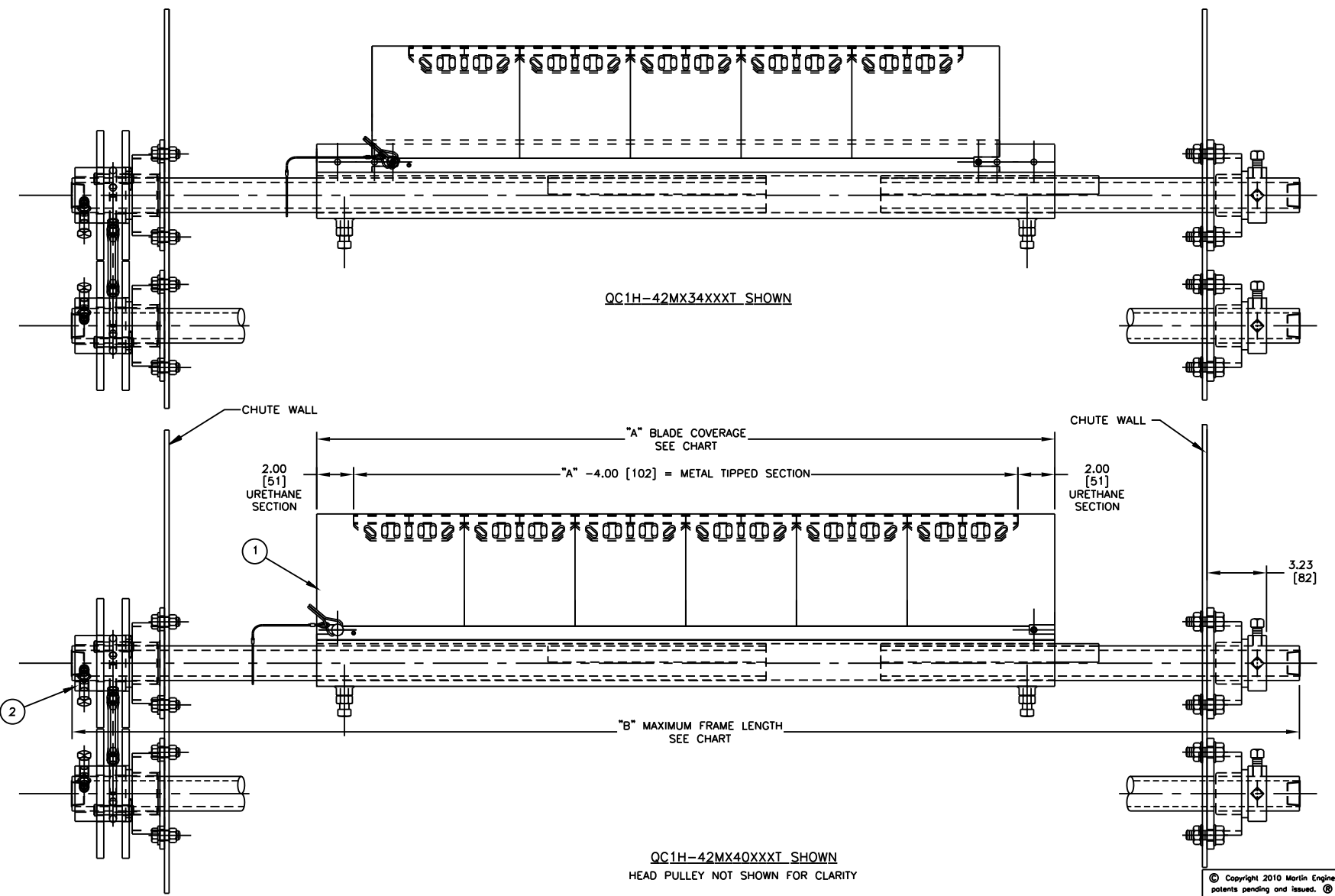
ITEM	QTY.	DESCRIPTION	PART NUMBER
1	2	MARTIN QC#1 HD MT BLADE ASM	QC1H-XXMXXXXXX
2	1	1-2-4 SINGLE TENSIONER ASM	38677
3	1	MARTIN LOW PROFILE STL DOOR 9X12	CYA-0912



FAR SIDE MOUNT DETAIL



- TURNBUCKLE ADJUSTMENT NOTE:
- 1) ADJUST TURNBUCKLE OUT TO ITS MAXIMUM ADJUSTMENT LENGTH AND INSTALL IN THE TURNBUCKLE MOUNTING FLANGES.
 - 2) HOLD BLADES TO BELT SURFACE.
 - 3) ADJUST TURNBUCKLE MOUNTING FLANGES SO THAT ANGLES "A" ARE APPROXIMATELY EQUAL.
 - 4) TIGHTEN SET SCREWS ON THE TURNBUCKLE MOUNTING FLANGES.
 - 5) SET THE BLADES TENSION PER THE TENSIONING CHART.
 - 6) TIGHTEN THE LOCKING NUT ON THE TURNBUCKLE.



QC1H-42MX34XXXX SHOWN

QC1H-42MX40XXXX SHOWN
HEAD PULLEY NOT SHOWN FOR CLARITY

© Copyright 2010 Martin Engineering. All rights reserved. Covered by U.S. and foreign patents pending and issued. ® and TM indicate trademarks of Martin Engineering.

MARTIN ENGINEERING
NEPONSET ILLINOIS USA

TITLE	MARTIN QC#1 HD METAL TIPPED ASM WITH 1-2-4 SINGLE TENS ASM 9 X 12 STEEL DOOR	DRAWN RND	DATE 05/14/10
NO.	REVISION	CHECKED	DATE 05/27/10
SALES DRAWING	PR11719	APPROVED	DATE 08/19/10
ECN	DATE	BY	SCALE 1/4=1

NO.	DESCRIPTION	ECN	DATE	BY