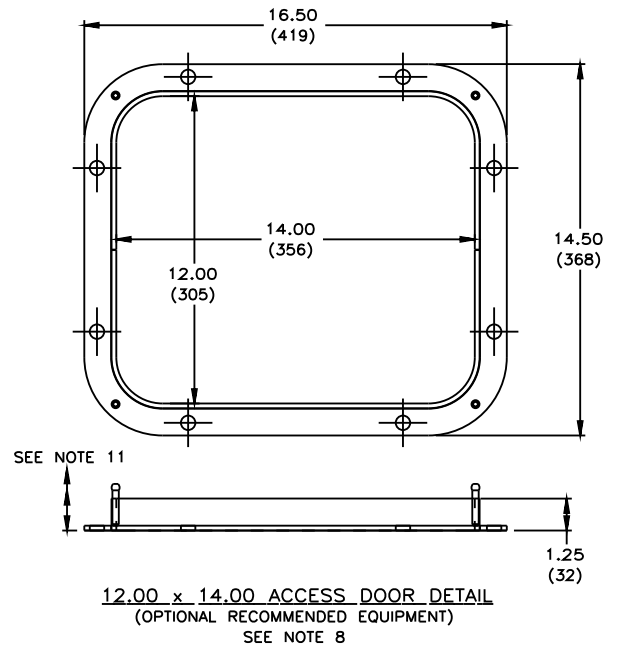
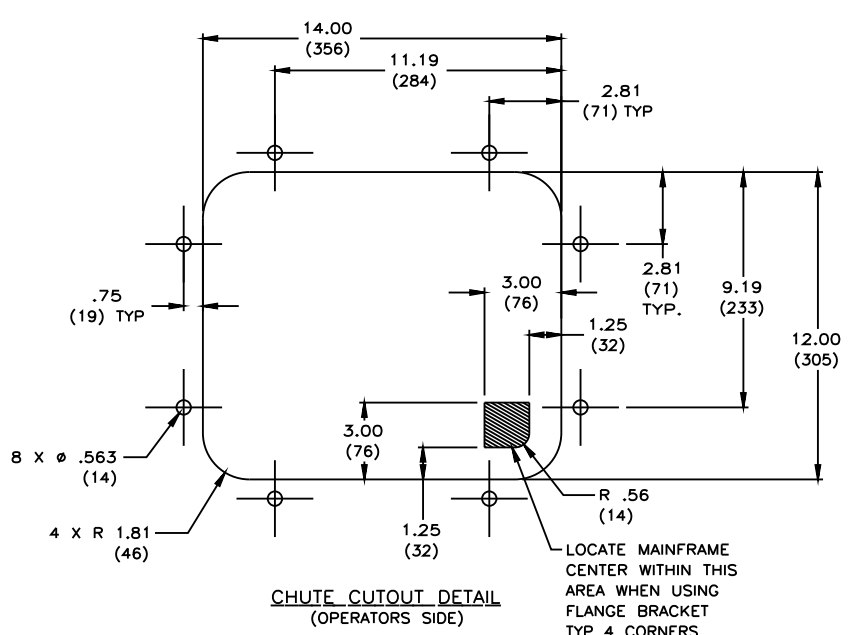


MAINFRAME ASM PART NUMBER	FRAME LENGTH	BLADE COVERAGE	QTY. ITEM 4
33139-18XX	43.00 (1092)	12.50 (318)	2
33139-24XX	49.00 (1245)	18.50 (470)	3
33139-30XX	61.00 (1549)	24.50 (623)	4
33139-36XX	67.00 (1702)	30.50 (775)	5
33139-42XX	73.00 (1854)	36.50 (927)	6
33139-48XX	79.00 (2007)	42.50 (1080)	7
33139-54XX *	85.00 (2159)	48.50 (1232)	8
33139-60XX *	97.00 (2464)	54.50 (1385)	9
33139-72XX *	109.00 (2769)	66.50 (1689)	11
33139-84XX *	123.00 (3124)	78.50 (1994)	13
33139-96XX *	135.00 (3429)	90.50 (2299)	15

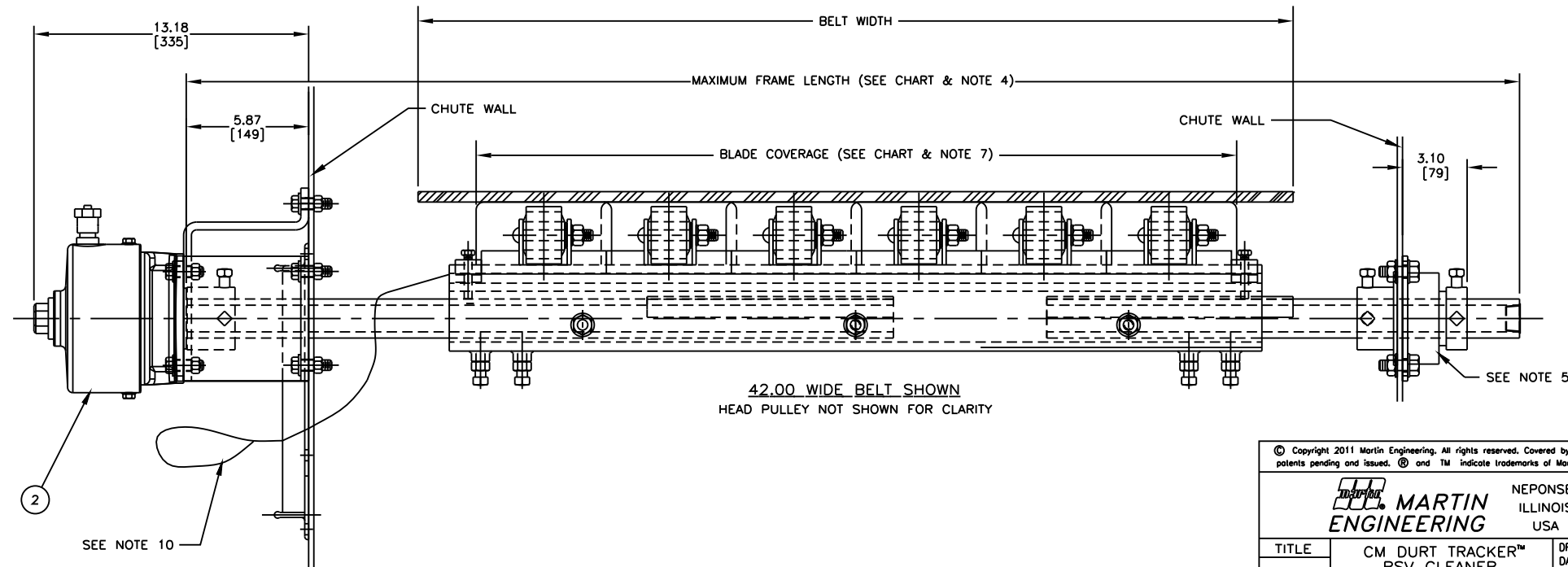
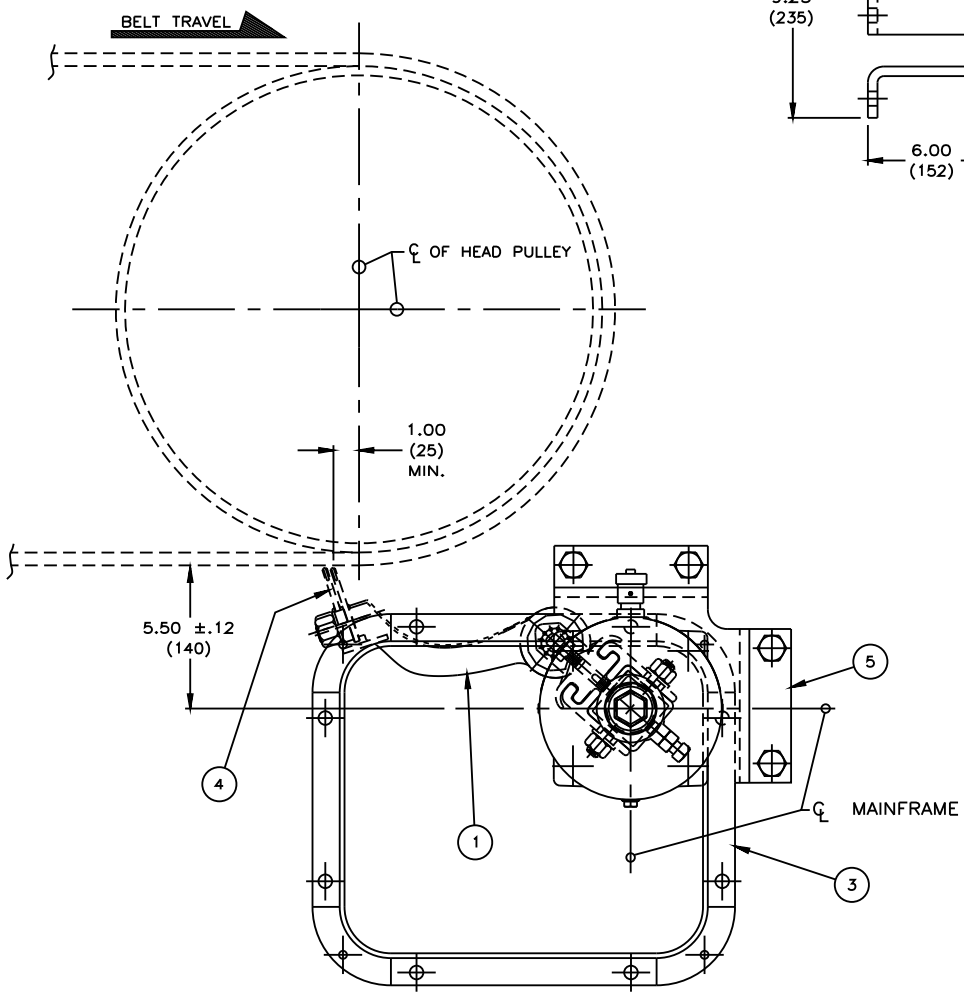
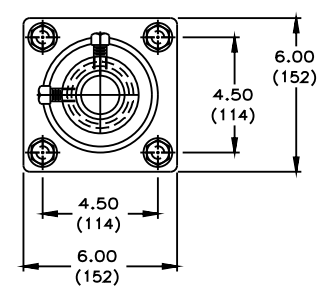
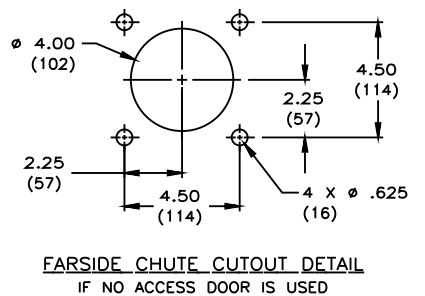
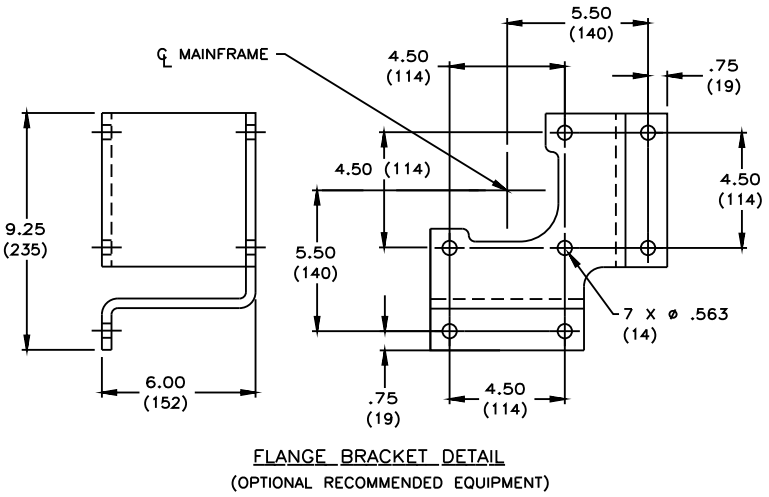
* - SEE NOTE 2

ASSEMBLY PART NUMBER	BASE COLOR	BASE PART NUMBER
33139-XXX	ORANGE	31032-01
33139-XXXBR	BROWN	31032-01BR
33139-XXXGR	GREEN	31032-01GR

BLADE CHART		
DESCRIPTION	P/N	ASM P/N
TUNGSTEN-CARBIDE BLADE	27924	33139-XXT
STAINLESS STEEL BLADE	16960	33139-XXS



- NOTES:
- 1) ALL DIMENSIONS ARE GIVEN IN INCHES (MM) AND ARE FOR REFERENCE ONLY.
 - 2) FOR BELT WIDTHS 54.00 (1372) AND ABOVE, MARTIN® ENGINEERING RECOMMENDS A DUAL TWIST TENSIONER (P/N: 38850-2).
 - 3) FIRST XX INDICATES BELT WIDTH, THE LAST XX INDICATES BLADE COLOR.
 - 4) WHERE EXTREME OR UNUSUAL CONDITIONS EXIST, OR SPECIAL MAINFRAME LENGTHS ARE REQUIRED, CONSULT MARTIN® ENGINEERING FOR ASSISTANCE.
 - 5) FAR SIDE OF MAINFRAME MAY BE MOUNTED TO CHUTE WALL IF NO DOOR IS USED.
 - 6) TENSIONER MAY BE BOLTED OR WELDED IN PLACE. MARTIN® ENGINEERING RECOMMENDS BOLTING WHEN APPLICABLE FOR EASIER MAINTENANCE AND ACCESSIBILITY. IF WELDING IS REQUIRED USE TWIST TENSIONER ASSEMBLY P/N 38850-A.
 - 7) BLADE COVERAGE WILL BE 5.50 (140) LESS THAN BELT WIDTH, DUE TO POSSIBLE MISTRACKING OF BELT OR DAMAGED EDGES OF BELT. BLADES MUST BE CENTERED ON BELT SURFACE.
 - 8) THE ACCESS DOOR CAN BE MOUNTED IN ANY ROTATED POSITION AS LONG AS BLADES/ARMS CAN BE REMOVED WITHOUT OBSTRUCTION.
 - 9) REFER TO OPERATOR'S MANUALS (P/N: M3296, M3143) FOR INSTALLATION DETAILS.
 - 10) LOOSE END OF LANYARD MUST BE SECURED AS SAFETY PRECAUTION.
 - 11) WHEN USING A ACCESS DOOR, A MINIMUM OF 2.50 (64) IS REQUIRED FOR THE REMOVAL OF RUBBER DOOR.
 - 12) BLANK SLIDING SLEEVES (P/N 23239) MAY BE TRIMMED IN FIELD SO THAT SLEEVE END WELDMENT (P/N 23458) IS FLUSH WITH END OF MAINFRAME TRACK AFTER CENTERING BLADES ON BELT.



© Copyright 2011 Martin Engineering. All rights reserved. Covered by U.S. and foreign patents pending and issued. ® and TM indicate trademarks of Martin Engineering.

MARTIN ENGINEERING NEPONSET ILLINOIS USA

TITLE: CM DURT TRACKER™ RSV CLEANER W/TWIST TENSIONER & 12X14 ACCESS DOOR

DATE: 04/06/11

DRWN: JAH

CHECKED: [Signature]

ENG: [Signature]

DATE: 04/06/11

APPROVED: [Signature]

DATE: 04/06/11

SCALE: 1/4

NO.	DESCRIPTION	ECN	DATE	BY

SALES DRAWING: M00825 S50091