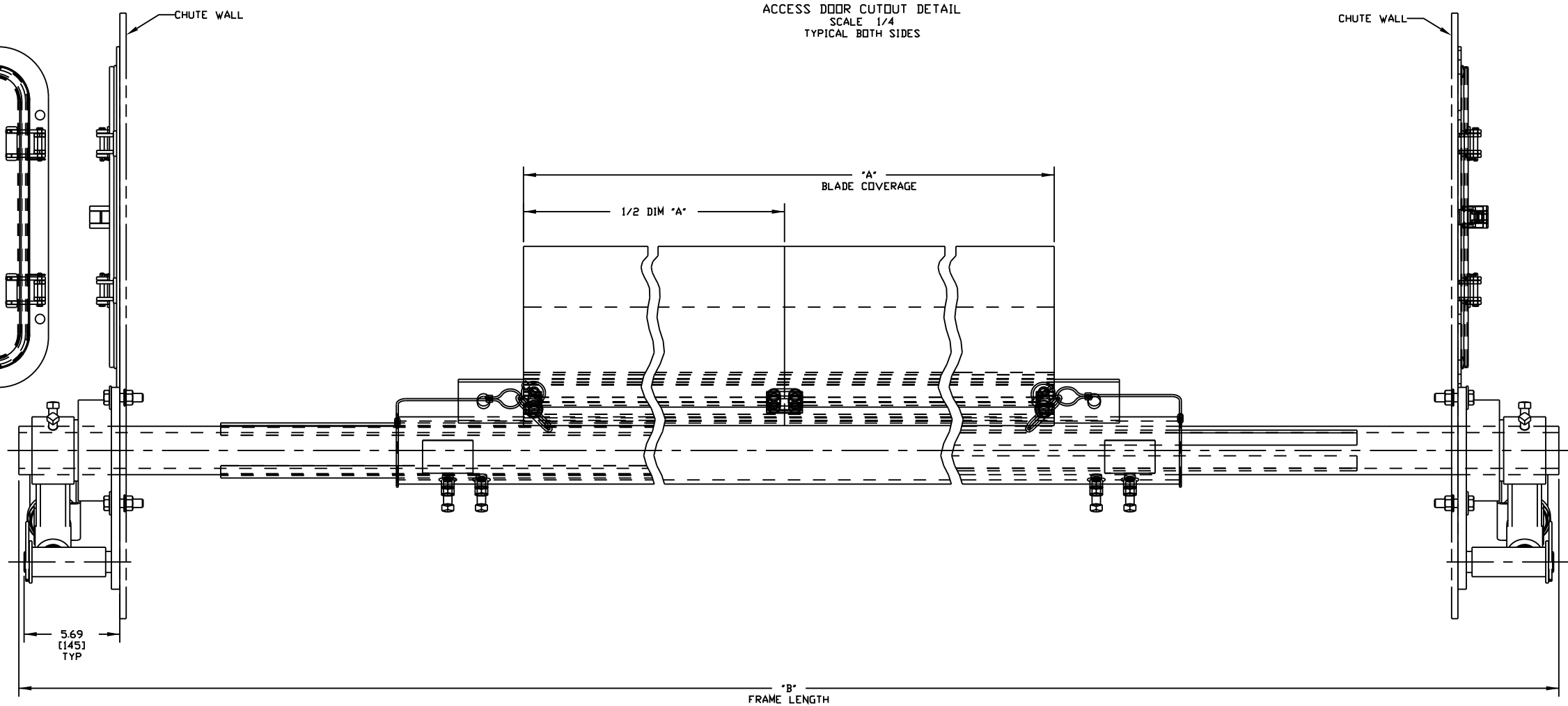
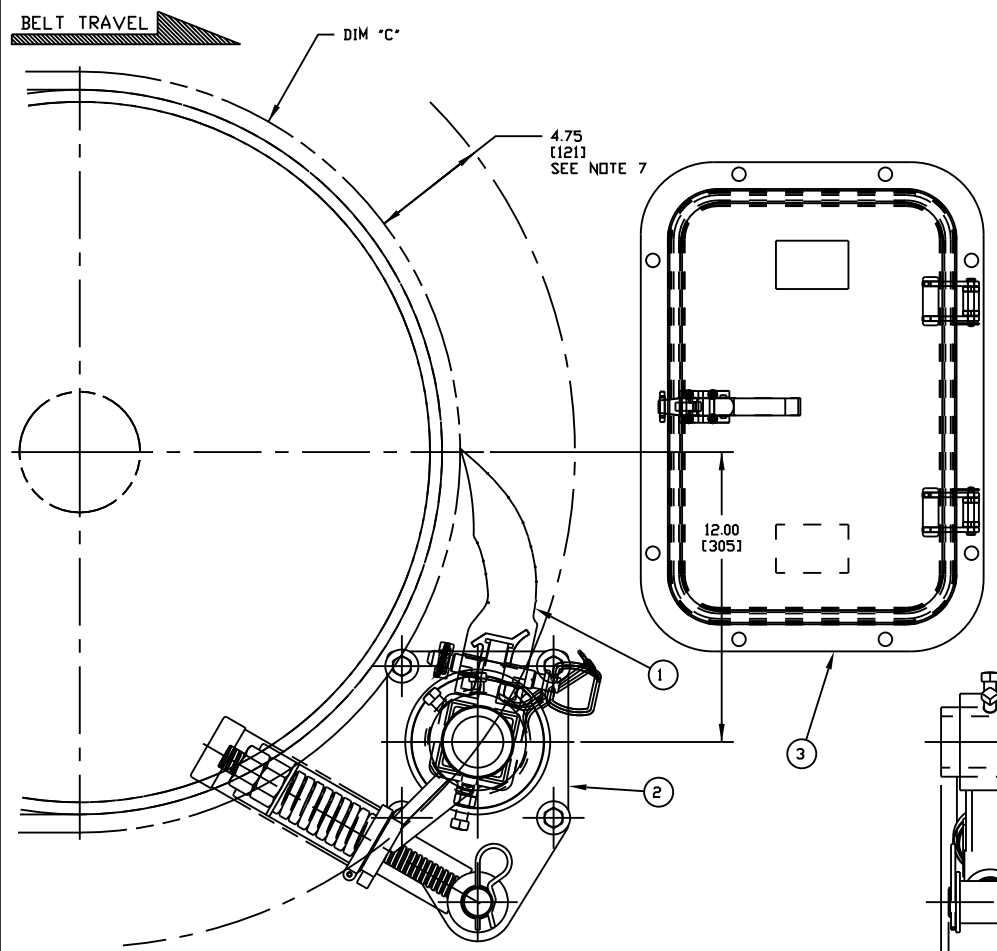
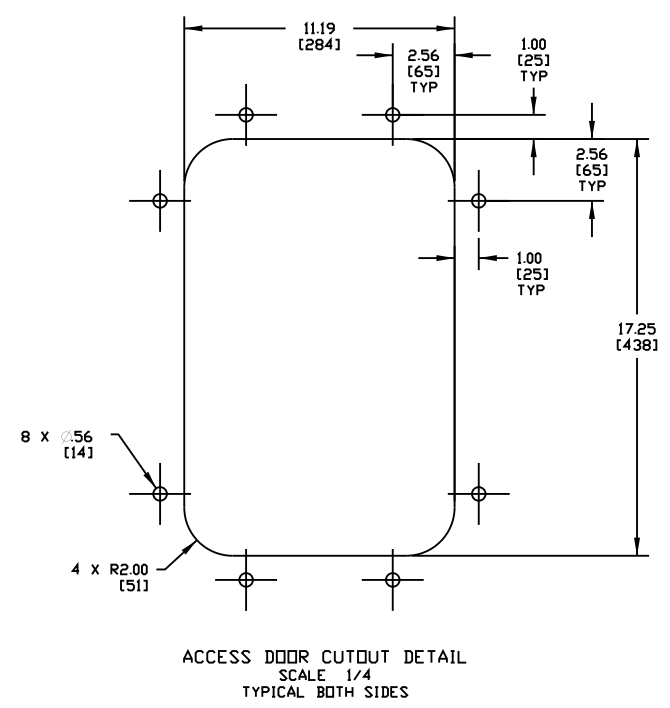
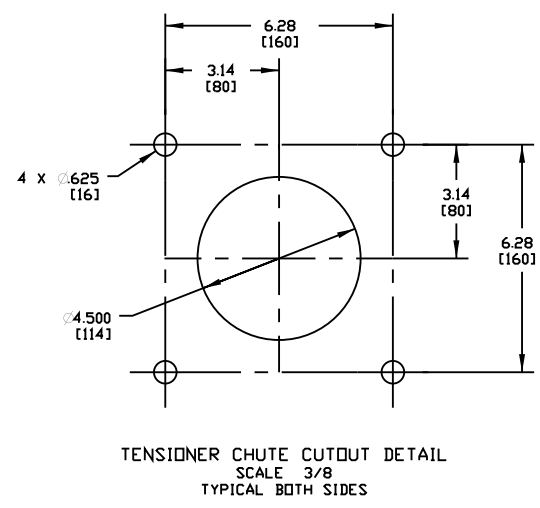


ITEM	QTY.	DESCRIPTION	PART NUMBER
1	1	MARTIN® QC #1 XHD DUAL BLADE ASM	SEE CHART
2	1	MARTIN® HD MAX SPRING TENSIONER	38947-2
3	2	MARTIN® LOW PROFILE ACCESS DOOR	CYA-1218

PART NO.	BELT WIDTH	DIM "A" MAX BLADE COVERAGE	DIM "B" FRAME LENGTH
38926D54X148XXX	54.00 [1350-1400]	48.00 [1219]	102.00 [2591]
38926D60X154XXX	60.00 [1500]	54.00 [1372]	108.00 [2743]
38926D72X166XXX	72.00 [1800]	66.00 [1676]	120.00 [3048]
38926D84X172XXX	72.00 [1800]	72.00 [1829]	132.00 [3353]
38926D84X178XXX	84.00 [2200]	78.00 [1981]	132.00 [3353]
38926D96X184XXX	84.00 [2200]	84.00 [2134]	144.00 [3658]
38926D96X190XXX	84.00 [2200]	90.00 [2286]	144.00 [3658]
38926D102X196XXX	84.00 [2200]	96.00 [2438]	150.00 [3810]
38926D114X1108XXX	96.00 [2400-2500]	108.00 [2743]	168.00 [4267]
38926D120X1114XXX	96.00 [2400-2500]	114.00 [2896]	168.00 [4267]

ASSEMBLY PART NO.	COLOR
38926DXXXXXXX	ORANGE
38926DXXXXXXBRX	BROWN
38926DXXXXXXCLX	TAN
38926DXXXXXXGRX	GREEN
38926DXXXXXXNBX	NAVY BLUE
38926DXXXXXXYLX	YELLOW



- NOTES:
- 1) ALL DIMENSIONS ARE GIVEN IN INCHES [MM].
  - 2) ALL DIMENSIONS ARE FOR REFERENCE ONLY.
  - 3) FOR EASY ACCESSIBILITY AND MAINTENANCE, MARTIN ENGINEERING RECOMMENDS BOLTING CLEANER TO EXISTING STRUCTURE WHEN APPLICABLE. CLEANER IS SHOWN IN RECOMMENDED WORKING POSITION.
  - 4) WHERE EXTREME OR UNUSUAL CONDITIONS EXIST, OR SPECIAL MAINFRAME LENGTHS ARE REQUIRED CONTACT MARTIN ENGINEERING.
  - 5) REFER TO OPERATOR MANUALS M3886, & M3127 FOR COMPLETE INSTALLATION INSTRUCTIONS.
  - 6) CLEANER CAN BE LOCATED ANYWHERE ALONG THE ARC, AS LONG AS THE MAINFRAME IS OUT OF MATERIAL TRAJECTORY AND THE BLADE TIPS ARE BELOW THE HORIZONTAL CENTERLINE OF THE HEAD PULLEY.
  - 7) THE HD MAX QC #1 PRE-CLEANER BLADES ARE DESIGNED TO REMOVE HEAVY CARRYBACK ONLY. DO NOT OVERTENSION.
  - 8) ONE FULL TURN OF THE TENSIONING NUT ON THE SPRING TENSIONER IS EQUAL TO .20 [5].
  - 9) BLADE COVERAGE IS LESS THAN BELT WIDTH, DUE TO POSSIBLE MISTRACKING OR DAMAGED EDGES OF THE BELT.
  - 10) THE FIRST TWO XX'S OF THE CLEANER PART NUMBER INDICATE BELT WIDTH. THE THIRD X INDICATES SOLID (S) OR SLIT (L). THE FOURTH X INDICATES SOLID/SLIT (S/L). THE NEXT TWO XX'S INDICATE BLADE WIDTH. THE LAST TWO XX'S INDICATE BLADE COLOR/MATERIAL. EXAMPLE: 38926D541148BR (54.00 BELT WIDTH, 48.00 SOLID, DUAL BROWN BLADE).

Copyright 2011 Martin Engineering. All rights reserved. Covered by U.S. and foreign patents pending and issued. R and TM indicate trademarks of Martin Engineering.

**MARTIN ENGINEERING** NEPONSET ILLINOIS USA

TITLE	MARTIN® QC #1 HD MAX DUAL BLD PRE-CLEANER W/XHD SPRING TENS & 12X18 ACCESS DOOR	DRAWN	RND
DATE	10/25/11	CHECKED	
ENG.	MJB	DATE	01/05/12
APPROVED DM		DATE	04/26/12
SCALE	1/4		

NO.	DESCRIPTION	ECN	DATE	BY
	REVISION			

SALES DRAWING  
PRI2177 S50095D-D